

Westchester County GIS

in

The Cloud

Providing Products and Services for Local Governments in 2013

2013 Spring NEARC Conference
University of Massachusetts
Amherst, MA
May 14, 2013

Sam Wear
Assistant Chief Information Officer (GIS)
Westchester County GIS
White Plains, New York

Westchester County GIS

- Established 1986
- Created first comprehensive large scale (1"=100') countywide land base in 2000 (Spring 2013 update)
- Extensive geospatial database & application development
- Environmental Systems Research Institute (ESRI) client – worldwide/industry leader in GIS software (www.esri.com)
- Support several other industry geospatial software programs in both in desktop and web environments (Google Earth & AutoCAD)

Relevant Program Areas

- Infrastructure/Asset Inventory
- Tax Maps/Parcel Information
- Land Use/Zoning/Planning
- Emergency Services (Fire & Police)
- Stewardship/Maintenance of Countywide base map
 - Geospatial Data Warehouse
- Geospatial coordination with local governments

The GIS Cloud Takes Hold

- Administrators and decision-makers much more informed / comfortable with cloud concept
- Enough success stories to work with
 - Noteworthy failures, too
- Significant reduction in government workforce
- One of few options available for governments with no GIS capacity to date
- Being discussed and considered on all levels of government
- Geospatial technology perfect fit for multi-government, centralized, *cloud-type* GIS program development

Cloud Services

- Software as a Service (SaaS)
 - Gmail, Business Analyst Online, ArcGIS Explorer Online, ArcGIS Online, etc.
- Platform as a Service (PaaS)
 - ArcGIS.com, Google Earth
- Infrastructure as a Service (IaaS)
 - Computing, storage, managed services, and other IT infrastructure components
- Data as a Service (DaaS)
 - Map services, commercial data services

Westchester County GIS Cloud

- Online mapping applications
- Map services
- Data warehouse
- Web feature editing and mobile data collection (ArcGIS.com)

Mapping Westchester County



[Home](#) [Interactive Mapping](#) [Data Warehouse](#) [Service Center](#) [Shared Services](#) [About Us](#)

Westchester County GIS

Westchester County Geographic Information Systems (GIS) develops, maintains and distributes digital data for Westchester County, New York. The program offers a wide range of online data as well as providing technical support to both local and county government agencies through highly trained and experienced staff.

In 2000, Westchester County GIS led development of the first countywide digital base map which now provides the spatial foundation of the county's GIS program. Maintaining state-of-the-art computing and GIS facilities in White Plains, New York, Westchester County GIS staff utilizes the latest versions of the Environmental Systems Research Institute (ESRI) software for internet, desktop, and field applications, with Oracle as its database management system. The program supports systems integration with latest innovative technologies such as Google Earth, Virtual Earth, ArcExplorer, and GeoPDF.

Westchester County GIS continues to focus on applications in the areas of emergency response and public safety and health, infrastructure management, land use planning, transportation, natural resource management, and Green technologies.

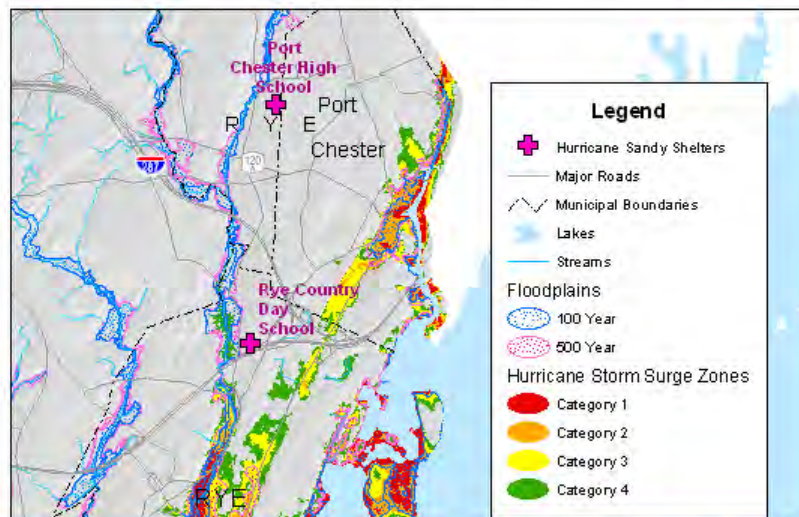
Connect With Us



Mapping
Westchester
County



County GIS in Support of Hurricane Sandy's Relief Efforts



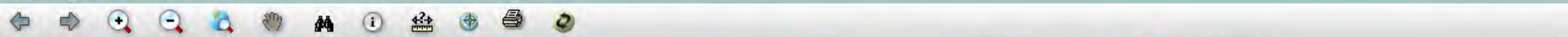
GIS Newsletter



Westchester County Geographic Information Systems

Mapping Westchester County

[Help](#) | [Disclaimer](#)



Aerial Photos

1947 1960 1976 2004 2007 2009 Map

Search for a Location

Your search result

Thematic Map

Show Additional Data on Map

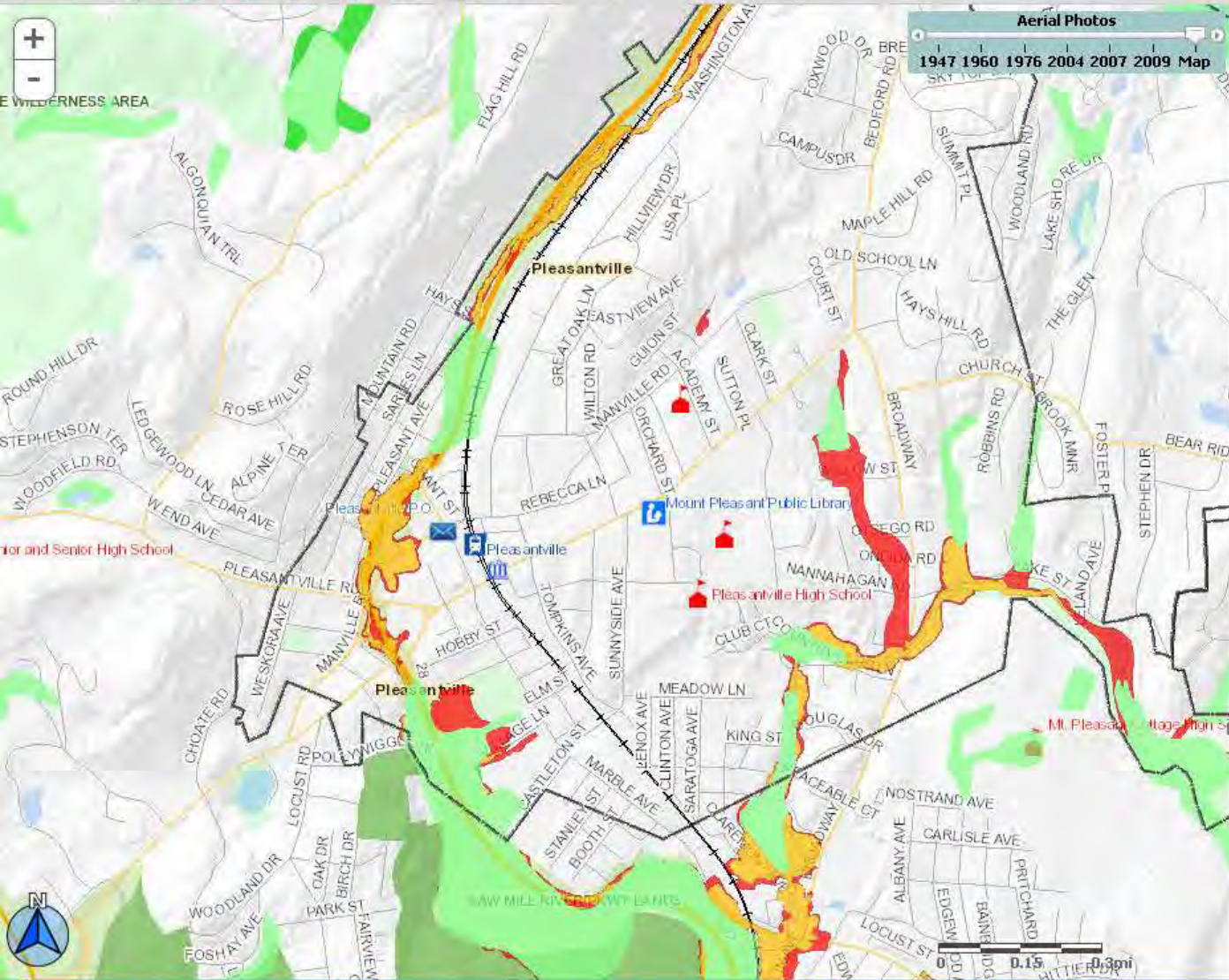
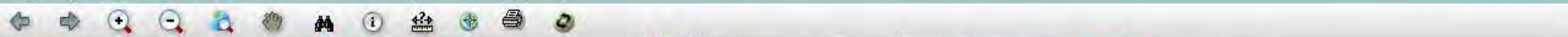
- ☐ Environmental Features
- ☐ Facilities and Services
- ☒ District Boundaries
- ☐ Transportation
- ☐ Emergency Zones/Support
- ☐ 2010 Census
- ☐ 2000 Census
- ☐ Local Government
- ☐ Green Facilities and Services
- ☐ Raster Data

User Note: Some layers (land use, 2 foot contours, etc.) are not visible at all scales. Users will have to "zoom-in" to neighbor and street level views for these features to appear on the viewing screen.

Westchester County Geographic Information Systems

Mapping Westchester County

[Help](#) | [Disclaimer](#)



Aerial Photos

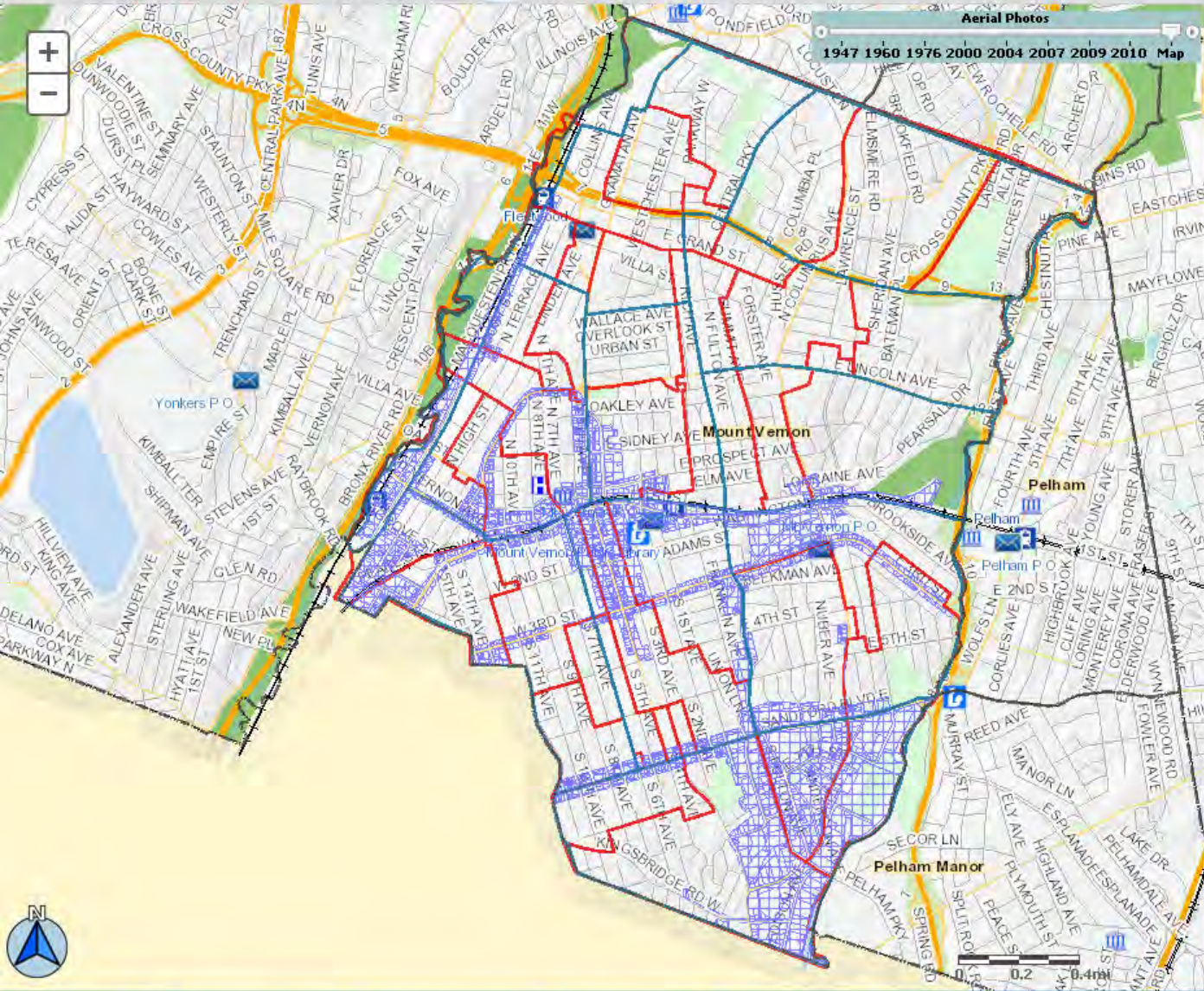
1947 1960 1976 2004 2007 2009 Map

Search for a Location

Your search result:

Thematic Map

- Show Additional Data on Map**
- ☐ Private Recreation
 - ☐ Public Institutions
 - ☐ Private Institutions
 - ☐ Public Non-Park Lands
 - ☐ Cemeteries
 - ☐ Water Supply Lands
 - ☐ Farms, Stables and Nurseries
 - ☐ Utility Lines and Aqueducts
 - ☐ Critical Environmental Areas
 - ☒ Hydric Soil Wetlands
 - ☒ NYS Regulated Wetlands
 - ☐ Tidal Wetlands
 - ☐ Coastal Shoals/Bars/Mudflats
 - ☐ Formerly Connected Tidal Wetlands
 - ☐ High Marsh/Salt Meadow
 - ☐ Intertidal Marsh
 - ☐ Landward Extent/No Code
 - ☒ Flood Plains
 - 100 Year Flood Plain
 - 500 Year Flood Plain
 - ☐ Steep Slopes
 - Slopes 15%-25%
 - Slopes Over 25%
 - ☐ Fish and Wildlife Habitats
 - ☐ Aquifers
 - >100 Gallons per Minutes
 - 10-100 Gallons per Minutes
 - ☐ Land Use
 - Agricultural Uses - Farms, Stables, Nurseries
 - Single Family Residential



Search for a Location

Your search result

Thematic Map

Show Additional Data on Map

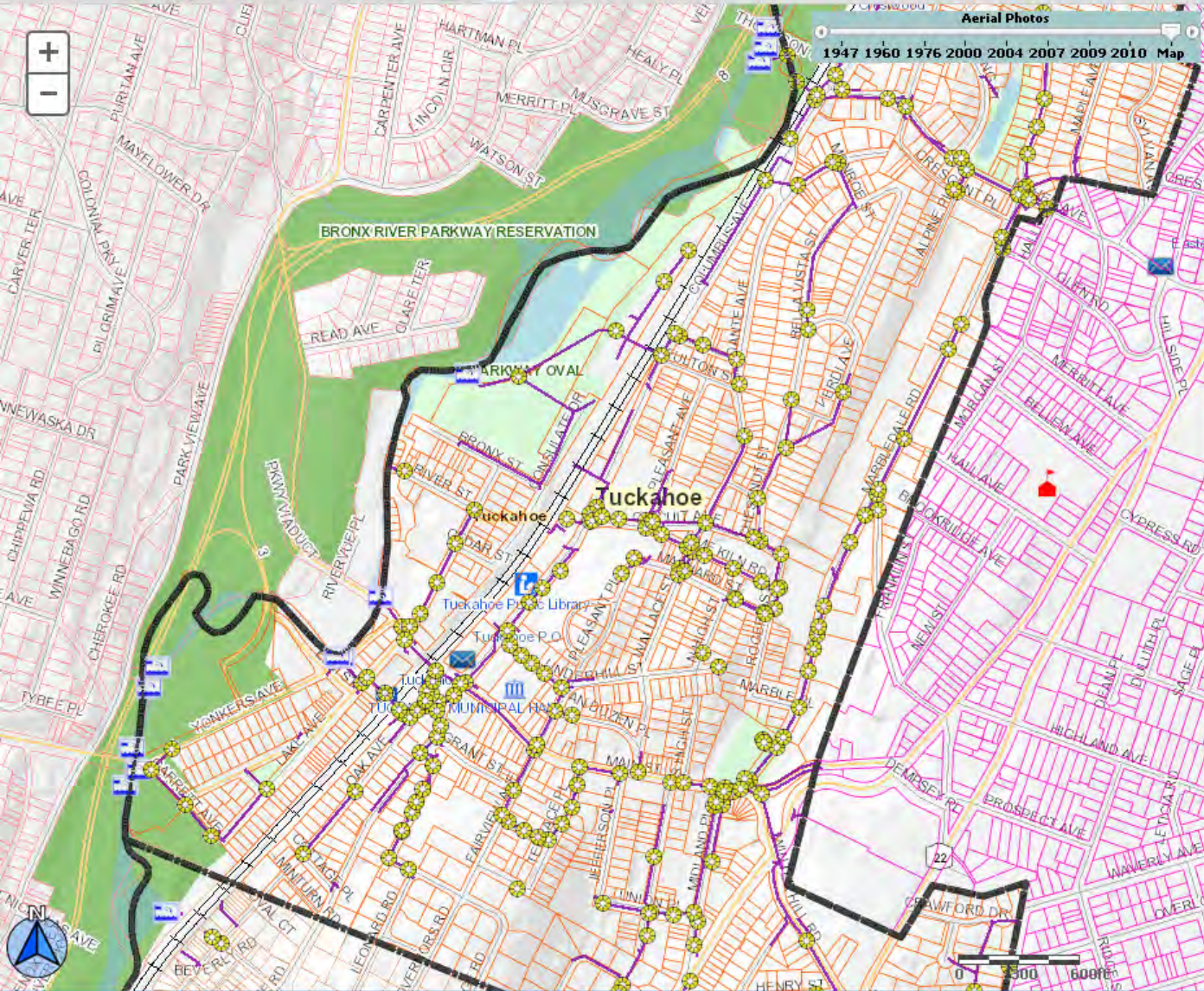
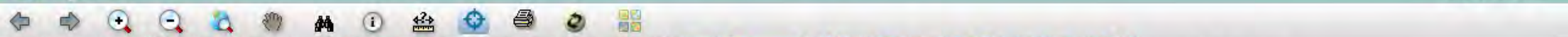
- ☐ Environmental Features
- ☐ Facilities and Services
- ☐ District Boundaries
- ☐ Transportation
- ☐ Emergency Zones/Support
- ☐ 2010 Census
- ☐ 2000 Census
- ☐ Local Government
 - ☐ Eastchester
 - ☐ Elmsford
 - ☐ Elmsford Zoning
 - ☐ Hastings-on-Hudson
 - ☐ Mount Vernon
 - ☒ Empire Zones
 - ☐ Garbage Pickup Routes
 - ☒ Mt. Vernon School Districts
 - ☐ Recycling Districts
 - ☐ Sanding Routes
 - ☒ Snow Plow Districts
 - ☐ New Rochelle
 - ☐ Rye Brook
 - ☐ Tuckahoe
- ☐ Green Facilities and Services
- ☐ EPA Data
- ☐ Raster Data

User Note: Some layers (land use, 2 foot contours, etc.) are not visible at all scales. Users will have to "zoom-in" to neighbor and street level views for these features to appear on the viewing screen.

Westchester County Geographic Information Systems

Mapping Westchester County

[Help](#) | [Disclaimer](#)



Search for a Location

Your search result

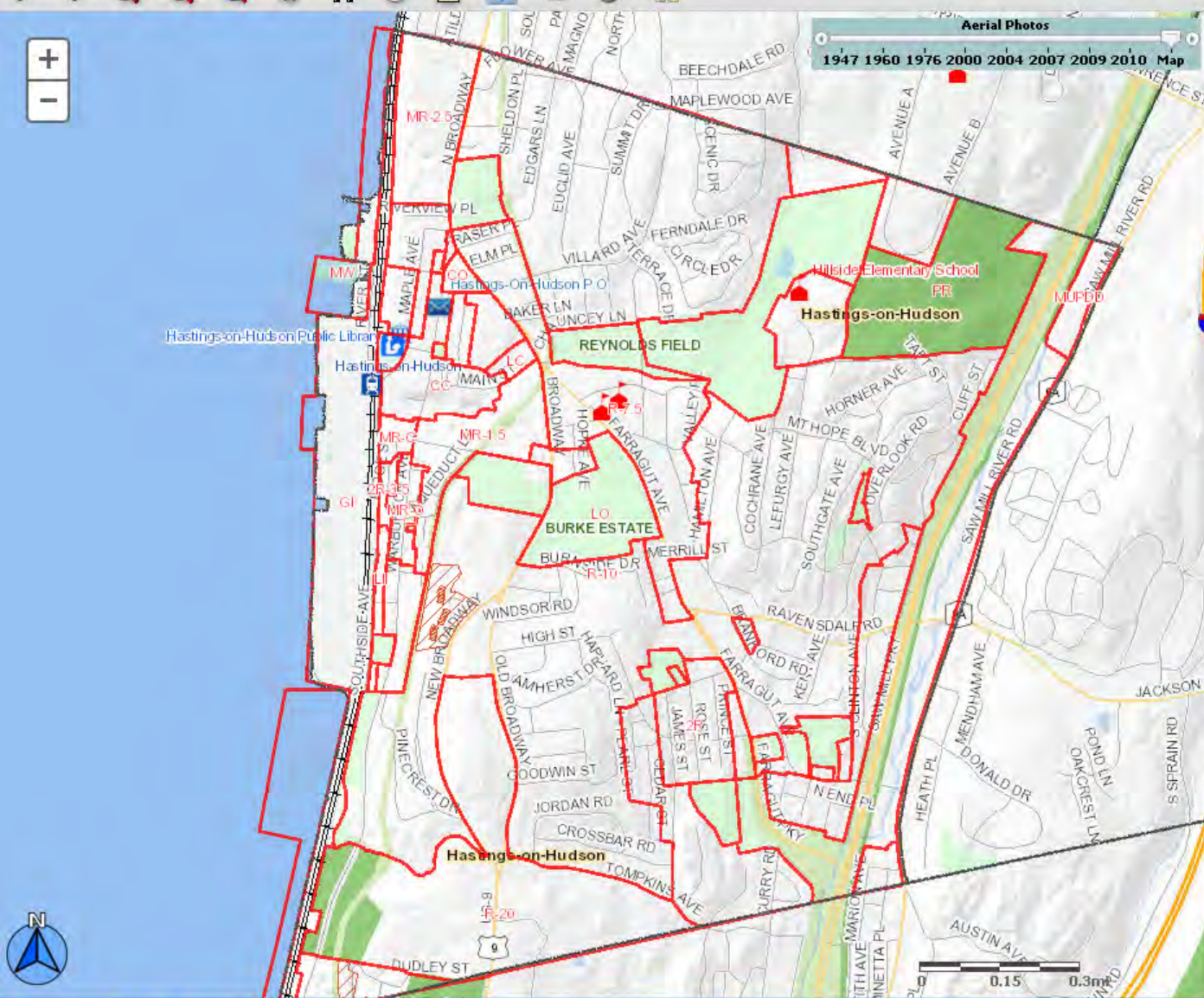
Thematic Map

Show Additional Data on Map

- ☐ Environmental Features
- ☐ Facilities and Services
- ☐ District Boundaries
- ☐ Transportation
- ☐ Emergency Zones/Support
- ☐ 2010 Census
- ☐ 2000 Census
- ☐ Local Government
 - ☐ Eastchester
 - ☐ Elmsford
 - ☐ Elmsford Zoning
 - ☐ Hastings-on-Hudson
 - ☐ Mount Vernon
 - ☐ New Rochelle
 - ☐ Rye Brook
 - ☐ Tuckahoe
 - ☐ Tuckahoe Storm Catchbasins
 - ☐ Tuckahoe Storm Manholes
 - ☐ Tuckahoe Storm Outfalls
 - ☐ Tuckahoe Storm Pipes

- ☐ Green Facilities and Services
- ☐ EPA Data
- ☐ Raster Data

User Note: Some layers (land use, 2 foot contours, etc.) are not visible at all scales. Users will have to "zoom-in" to neighbor and street level views for these features to appear on the viewing screen.



Aerial Photos

1947 1960 1976 2000 2004 2007 2009 2010 Map

Search for a Location

Your search result

Thematic Map

Show Additional Data on Map

- ☐ Environmental Features
- ☐ Facilities and Services
- ☐ District Boundaries
- ☐ Transportation
- ☐ Emergency Zones/Support
- ☐ 2010 Census
- ☐ 2000 Census
- ☐ Local Government
 - ☐ Eastchester
 - ☐ Elmsford
 - ☐ Elmsford Zoning
 - ☐ Hastings-on-Hudson
 - ☒ Cluster Zoning Overlay
 - ☒ Zoning Districts
 - ☒ Neighborhood Commercial Overlay District
 - ☐ View Preservation District
- ☐ Mount Vernon
- ☐ New Rochelle
- ☐ Rye Brook
- ☐ Tuckahoe
- ☐ Green Facilities and Services
- ☐ EPA Data
- ☐ Raster Data

User Note: Some layers (land use, 2 foot contours, etc.) are not visible at all scales. Users will have to "zoom-in" to neighbor and street level views for these features to appear on the viewing screen.

Westchester County Geographic Information Systems

Mapping Westchester County



Add Map Service

NOAA Coastal Inundation Hazards
[Legend](#)

FEMA Coastal Flood Risk Zones
[Legend](#)

Digital Surface Model
[Legend](#)

Clear

Last Selection

Clear Last Selection

Historical Photos

2004 2007 2009 2010 **Map**

Your search result:

Thematic Map

Show Additional Data on Map

☐

Environmental Features

☐

Facilities and Services

☒

District Boundaries

☐

Transportation

☐

Emergency Zones/Support

☐

2010 Census

☐

2000 Census

☐

Local Government

☐

Green Facilities and Services

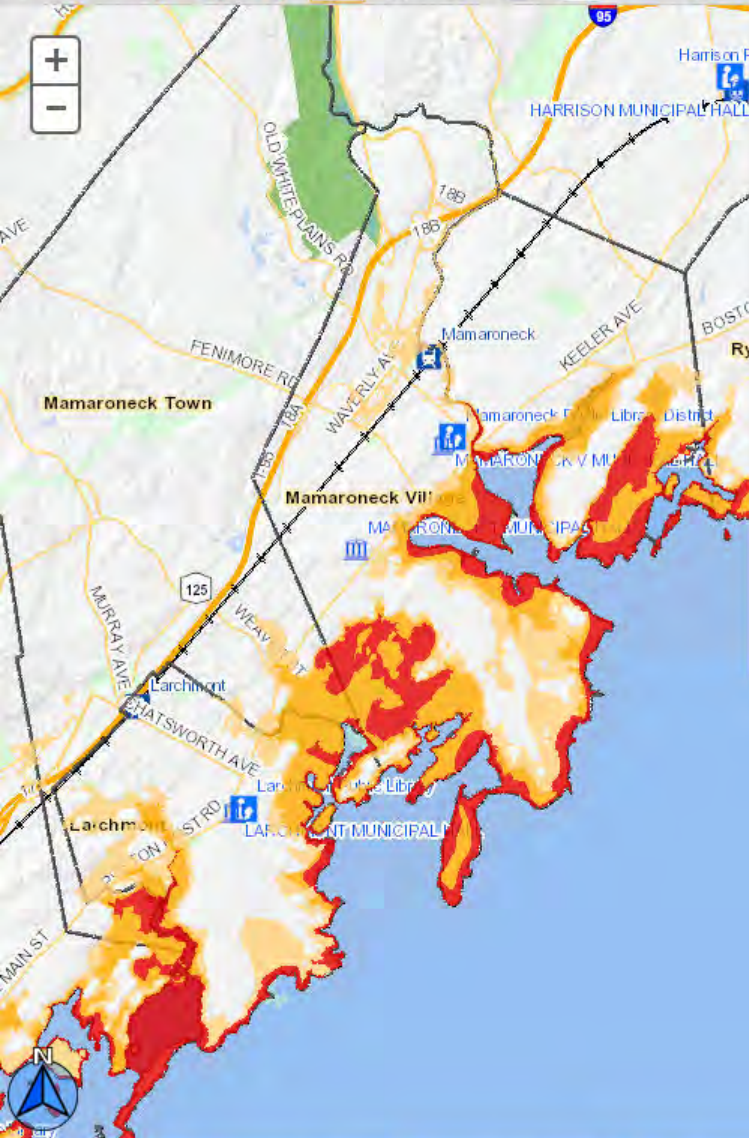
☐

EPA Data

☐

Raster Data

User Note: Some layers (land use, 2 foot contours, etc.) are not visible at all scales. Users will have to "zoom-in" to neighbor and street level views for these features to appear on the viewing screen.



NOAA Coastal Inundation Hazards

[Legend](#)

FEMA Coastal Flood Risk Zones

[Legend](#)

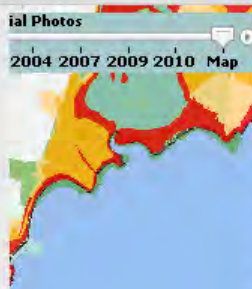
Digital Surface Model

[Legend](#)

Clear

Last Selection

Clear Last Selection



Search for a Location

Your search result

Thematic Map

Show Additional Data on Map

- ☐ Environmental Features
- ☐ Facilities and Services
- ☒ District Boundaries
- ☐ Transportation
- ☐ Emergency Zones/Support
- ☐ 2010 Census
- ☐ 2000 Census
- ☐ Local Government
- ☐ Green Facilities and Services
- ☐ EPA Data
- ☐ Raster Data

User Note: Some layers (land use, 2 foot contours, etc.) are not visible at all scales. Users will have to "zoom-in" to neighbor and street level views for these features to appear on the viewing screen.

http://giswww.westchestergov.com/gismap/

Mapping Westchester County

Westchester County Geographic Information Systems

Mapping Westchester County

Help | Disclaimer

Aerial Photos
1947 1976 2004 2007 2009 Map

Tarrytown

Search for a Location

Search Type:
Address

Street:
148 Martine Ave

City:
White Plains

Zip Code:
10601

What are you looking for?

- ☒ Locate An Address
- ☐ Solar Power Property Finder
- ☐ Indian Point Evacuation Zone
- ☐ Hurricane Evacuation Zone
- ☐ County Sewer District
- ☐ Elected Officials
- ☐ Livable Communities
- ☐ Green Facilities/ Services
- ☐ Facilities and Services
- ☐ Westchester Be Fit
- ☐ Traffic Cameras

GO

Your search result

Thematic Map

Show Additional Data on Map

0 469 feet

Done

Trusted sites

100%

Tax Parcel Viewer



INTERACTIVE MAPPING

- Mapping Westchester
- Municipal Tax Parcel Viewer
- Solar Property Locator
- Green Map Locator
- Hurricane Zone Finder
- Indian Point Plan
- Elected Officials
- Livable Communities
- County Sewer Districts

Interactive Mapping Applications

For a brief description of Westchester County's Public GIS Mapping Applications, please read below.

Mapping Westchester County

Mapping Westchester County is the county's primary internet mapping portal, providing access to dozens of datasets, and to specialized "County Locators": Hurricane Zone, Indian Point Plan, Elected Officials, Community Services, and Green Facilities. In addition, select county datasets - designated by this icon - can be downloaded directly from the mapping application.

Visit Mapping Westchester County

Solar Property Locator

Indian Point Plan

Hurricane Zone Finder

County Sewer Districts

Elected Officials

Livable Communities

Facilities and Services

Westchester Be Fit

Traffic Cameras

- Ardsley
- Briarcliff Manor
- Bronxville
- Dobbs Ferry
- Eastchester
- Elmsford
- Hastings-on-Hudson
- Irvington
- Peekskill
- Mt. Kisco
- Ossining Town
- Ossining Village
- Pelham
- Pelham Manor
- Rye Brook
- Tarrytown
- Tuckahoe
- Ardsley

Municipal Tax Parcel Viewer

This viewer allows users to identify parcels by address or owner name. Users can also print maps, export a query result, and view more municipalities in the future. There are several municipalities in the County Parcel Viewer. Please check back periodically for updates.

Select a municipality

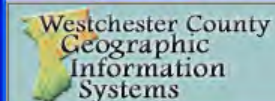
Ardsley

Go

Westchester Green Map

In April 2007, Westchester County GIS launched the Westchester County Green Map, an interactive web-based mapping application which highlights green industries, recycling programs, fuel efficient transportation systems, and community based projects. The Green Map was initiated as part of the County Executive's Climate Change project.

Visit Westchester Green Map
Find Green Facilities and Services Now



Municipal Tax Parcel Viewer

Print Feedback Accessibility Start Query

You are searching: **Irvington.** [Change](#)☐ Search by owner's name

Enter print key or address

Search

1. Search by Print Key or Address. For example, 2.90-48-3 or 35 S BROADWAY.

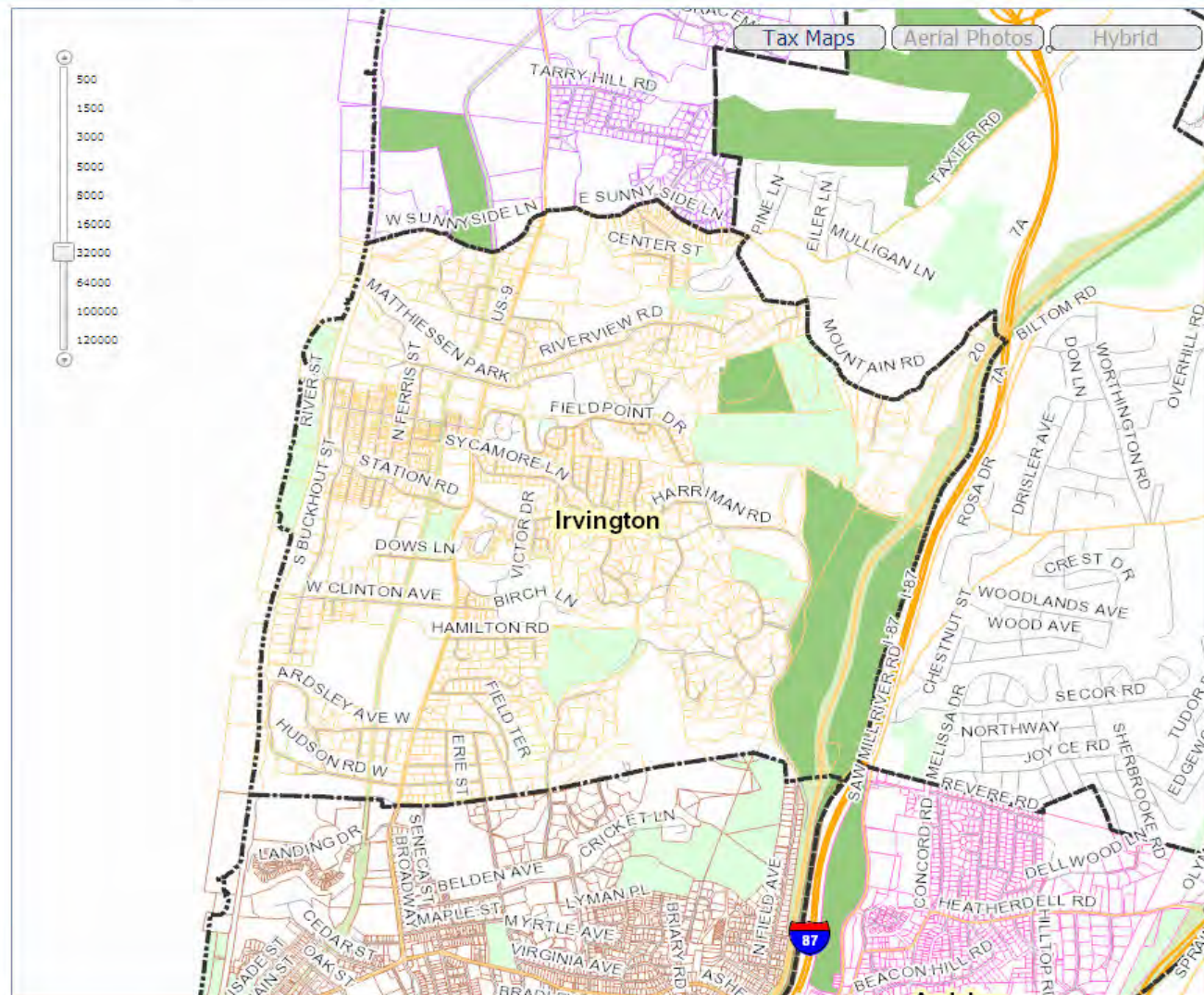
2. Check the 'Search by owner's name' box to search owner. For example, school or village. Note: some municipalities don't have ownership data or the data is not complete.

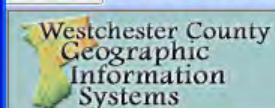
Important Note:

- All search and query will be strictly constrained in above municipality.

- To get best search result, please select the address from the AutoComplete dropdown list; Or omit street type, such as street or st, avenue or ave, lane or ln for address search.

- **DO NOT** include state, city or ZIP in the address search.





Municipal Tax Parcel Viewer

Print Feedback Access Start Over

You are searching: **Irvington.** [Change](#)

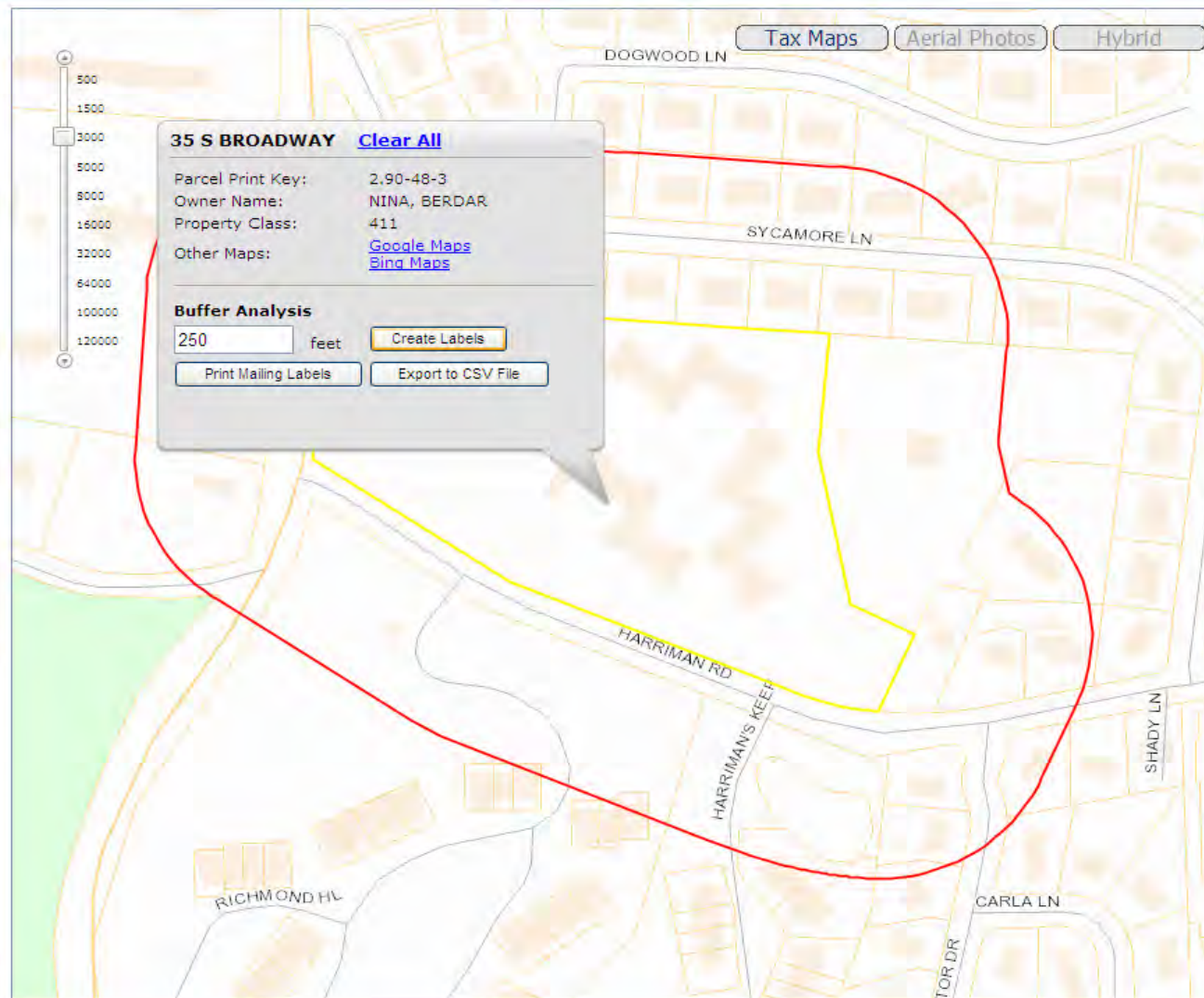
☐ Search by owner's name

35 S BROADWAY

Search

45 parcels found, click row to see it on map.

OWNER	ADDRESS	PRINT KEY
HAHM, EDWARD B	32 SYCAMORE LA	2.90-48-2
FERRAN, MARY B	79 HARRIMAN RD	2.90-48-8
MELVIN, MARY L	40 SYCAMORE LA	2.90-48-2
LAU, TAK-CHING K	48 SYCAMORE LA	2.90-48-1
NINA, BERDAR	35 S BROADWAY	2.90-48-3
PALERMO, DANIEL	24 SYCAMORE LA	2.90-48-2
LAHIRI, MURALI	56 SYCAMORE LN	2.90-48-1
SCHAEFFER, PETER A	64 SYCAMORE LN	2.90-48-1
SIVIGLIA, PETER	72 SYCAMORE LN	2.90-48-1
SCHULTZ, LORRAINE	82 SYCAMORE LN	2.90-48-1
DENARDO, JOSEPH	83 HARRIMAN RD	2.90-48-5
TUGAL, OSMAN	17 SYCAMORE LN	2.90-45-4
BACHARACH, SETH & LEAH	30 SYCAMORE LN	2.90-48-1
ZERBO, MICHAEL	4 DOGWOOD LA	2.90-45-2
IMAMURA, KK	59 SYCAMORE LA	2.90-45-2
n/a	30 S BROADWAY	2.90-44-2
BRANDT, DANIEL B	27 SYCAMORE LA	2.90-45-5
LA ROSA, JULIUS	67 SYCAMORE LA	2.90-45-2
FERRARO, ERNEST	33 SYCAMORE LA	2.90-45-2
LASERNA, GUSTAVO A	39 SYCAMORE LN	2.90-45-2
WAN, DR CHEE-CHANG	45 SYCAMORE LA	2.90-45-3
GUERRERO, DAVID E.A.	51 SYCAMORE LA	2.90-45-3
WILSON, STEVEN A	28 SYCAMORE LA	2.90-48-2
POLISAR, MARK	26 SYCAMORE LA	2.90-48-2
n/a	BROADWAY	2.90-50-1
DENARDO, JOSEPH	81 HARRIMAN RD	2.90-48-4
GILLILAND, MARK	85 HARRIMAN RD	2.90-48-7



Westchester County Geographic Information Systems

Municipal Tax Parcel Viewer

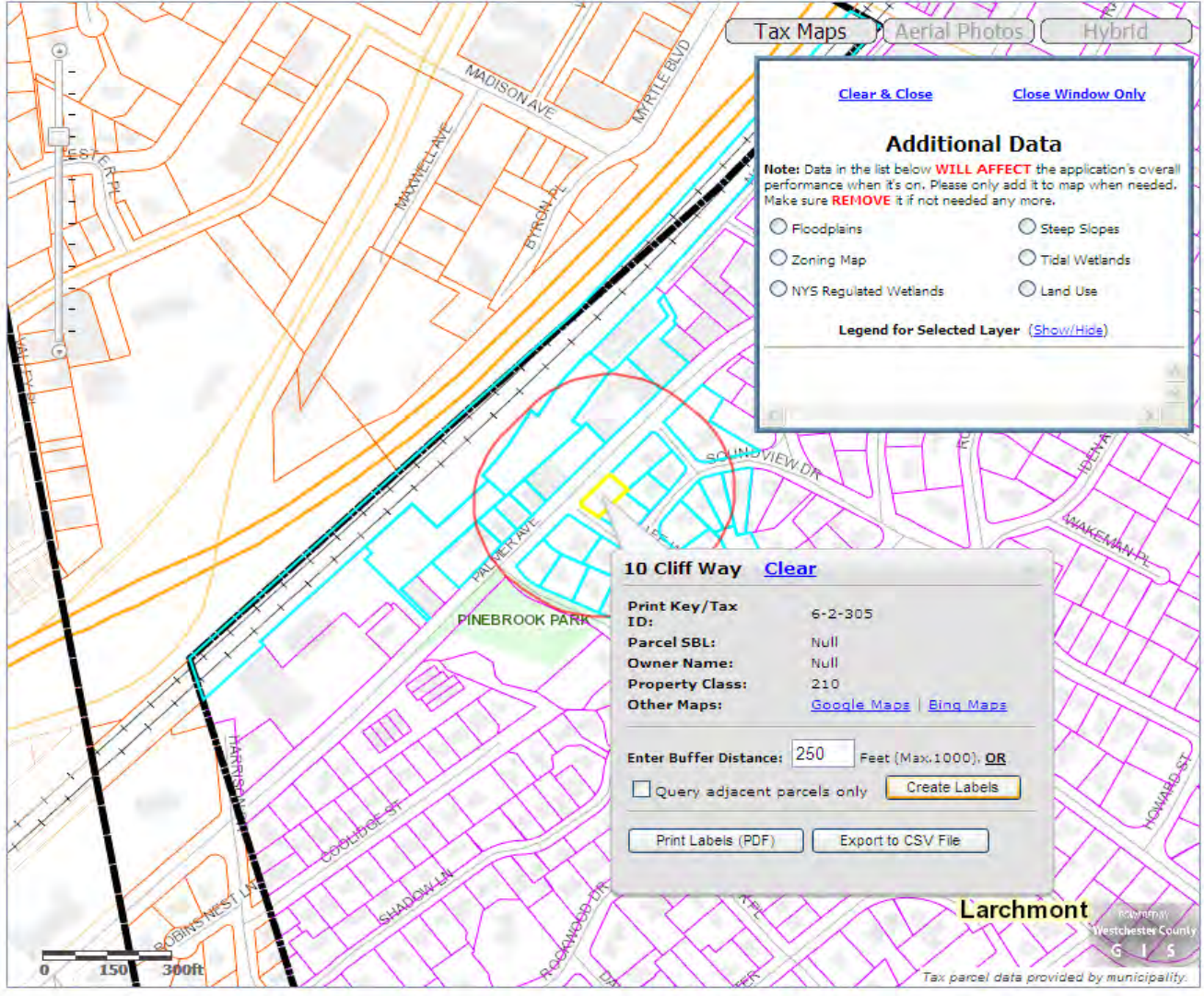
You are searching: **Larchmont.** [Change](#)

☐ Search by owner's name

10 Cliff Way [Search](#)

32 parcels were found. Click row for map. [Clear](#)

OWNER	ADDRESS	PRINT KEY	SBL
n/a	15 Soundview Dr	6-5-413	
n/a	4 Cliff Way	6-5-430	
n/a	86 Stuyvesant Ave	6-5-318	
n/a	7 Soundview Dr	6-5-393	
n/a	9 Soundview Dr	6-5-400	
n/a	11 Soundview Dr	6-5-406	
n/a	6 Soundview Dr	6-2-214	
n/a	8 Soundview Dr	6-2-270	
n/a	North Ave	6-2-494	
n/a	2005 Palmer Ave	6-2-351	
n/a	2039 Palmer Ave	6-2-331	
n/a	94 Stuyvesant Ave	6-1-316	
n/a	77 Pine Brook Dr	6-1-420	
n/a	79 Pine Brook Dr	6-1-413	
n/a	81 Pine Brook Dr	6-1-404	
n/a	83 Pine Brook Dr	6-1-387	
n/a	9 Cliff Way	6-1-368	
n/a	7 Cliff Way	6-1-360	
n/a	5 Cliff Way	6-1-352	
n/a	3 Cliff Way	6-1-344	
n/a	90 Stuyvesant Ave	6-1-327	
n/a	2051 Palmer Ave	6-1-525	
n/a	2053 Palmer Ave	6-1-520	
n/a	2061 Palmer Ave	6-1-515	
n/a	2067 Palmer Ave	6-1-500	
n/a	Palmer Ave	6-1-488.1	
n/a	18 Glen Lake Dr	6-2-283	
n/a	10 Soundview Dr	6-2-283	
n/a	12 Soundview Dr	6-2-257	



[Tax Maps](#) [Aerial Photos](#) [Hybrid](#)

[Clear & Close](#) [Close Window Only](#)

Additional Data

Note: Data in the list below **WILL AFFECT** the application's overall performance when it's on. Please only add it to map when needed. Make sure **REMOVE** it if not needed any more.

- ☐ Floodplains
- ☐ Zoning Map
- ☐ NYS Regulated Wetlands
- ☐ Steep Slopes
- ☐ Tidal Wetlands
- ☐ Land Use

Legend for Selected Layer: [\(Show/Hide\)](#)

10 Cliff Way [Clear](#)

Print Key/Tax ID: 6-2-305

Parcel SBL: Null

Owner Name: Null

Property Class: 210

Other Maps: [Google Maps](#) | [Bing Maps](#)

Enter Buffer Distance: Feet (Max:1000), [OR](#)

☐ Query adjacent parcels only [Create Labels](#)

[Print Labels \(PDF\)](#) [Export to CSV File](#)

Data Warehouse



DATA WAREHOUSE

- County Data Download
- Municipal Tax Maps
- Orthophotography
- 2-Foot Topo
- LIDAR

Frequently Asked Questions

Data Warehouse

Westchester County datasets are available for download. Please browse the web pages below to view available datasets.

County Data Download

Countywide datasets are grouped by theme (district and boundaries, community facilities, environmental features, planning, transportation and census boundaries). Data can be downloaded in either a zipped ESRI shapefile or a Google Earth KML file. These datasets were developed by Westchester County GIS or are based on data obtained from other organizations. Users are encouraged to review coverage metadata.

Municipal Tax Maps

In cooperation with selected local governments, Westchester County GIS is providing digital tax parcel data online for download. The amount of attribute data associated with each tax parcel varies by municipality.

An interactive **Municipal Tax Parcel Viewer** is also made available online that allows users to identify local parcel data by address, print key or owner name (if available). Users can also print maps, export a query result, and generate mailing labels needed for an 'abutters' notice.

Orthophotography

Digital Orthophotography covering Westchester County.

2-Foot Topo

2004 CAD .dwg file format covering Westchester County. Each file covers 5000 ft by 5000 ft on the ground. Vertical Datum is NAVD88. Data meets National Map Accuracy Standards at 1"=100'.



- DATA WAREHOUSE
- County Data Download
- Base Map Planimetrics
- Boundary & Districts
- Census
- Community Facilities
- Environmental Planning
- Transportation
- Municipal Tax Maps
- Orthophotography
- 2-Foot Topo
- LIDAR
- Frequently Asked Questions

Environmental Data Downloads

Data Warehouse > County Data Download > Environmental Features

Click dataset name for additional information (where available). Click shapefile and KMZ globes to download the zipped data files.

Dataset	SHP	KMZ
2006 Soil Survey (SSURGO)	26.9 MB 	
Beaches (Public and Private Locations)	9 KB 	
Bedrock Geology	168 KB 	
Citizen Water Monitoring Sites	11 KB 	4 KB 
County Designated Critical Environmental Areas	260 KB 	296 KB 
County Sewage Treatment Plants	7 KB 	3 KB 
Digital Elevation Model (50- Foot)	41 MB 	
FEMA 100 & 500 year flood plains (2007)	14.3 MB 	16.6 MB 
Gaging Stations	8 KB 	
Hazardous Waste Sites	111 KB 	72 KB 
Hydric Soil Wetlands	4.16 MB 	4.23 MB 
Land Cover Classification	343 KB 	
Major & Minor Drainage Divides (2012)	527 KB 	612 KB 
Major Drainage Basins	167 KB 	
National Wetland Inventory	2.21 MB 	
NYS Designated Freshwater Wetlands	593 KB 	625 KB 
Steep Slopes	111 MB 	
Sewage Treatment Facilities (Private)	5 KB 	5 KB 
Stormwater Outfalls	69 KB 	
Surface Geology	269 KB 	
Tidal Wetlands	663 KB 	883 KB 



DATA WAREHOUSE

County Data Download

Base Map Planimetrics

- Boundary & Districts
- Census
- Community Facilities
- Environmental Planning
- Transportation
- Municipal Tax Maps
- Orthophotography
- 2-Foot Topo
- LiDAR










Frequently Asked Questions

Base Map Planimetric Download

Data Warehouse > County Data Download > Base Map Planimetrics

Base Map planimetric datasets were photogrammetrically derived from the county's 2004 base map project and meet National Map Accuracy Standards at 1"=100'.

Click dataset name for additional information (where available). Click shapefile and KMZ globes to download the zipped data files.

Countywide Base Map Planimetrics		
Dataset	SHP	KMZ
Rail Lines	143 KB 	
Roads	10.4 MB 	
Major Lakes and Reservoirs	2.09 MB 	2.45 MB 
Lakes and Reservoirs	9.4 MB 	10.9 MB 
Streams and Rivers	10.6 MB 	
10' Contour Lines by USGS Quads	Download	
100' Contour Lines	48.9 MB 	
Stone Walls	5.56 MB 	

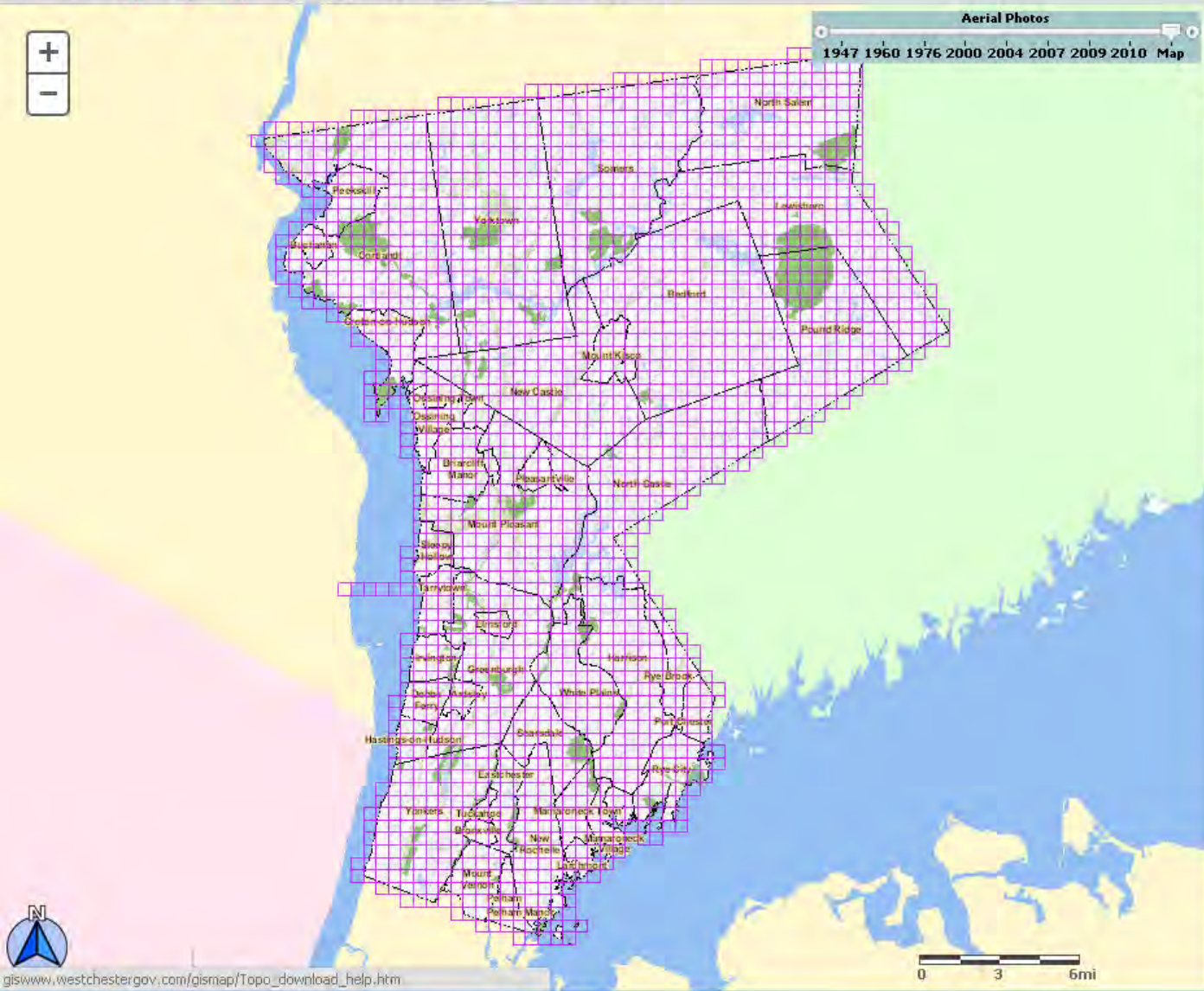
2004 Municipalwide Base Map Planimetrics

Street centerlines, structures, hydrography, transportation features and structures, rail lines and spot elevation feature classes are available by municipality. To browse and download the datasets, please select a municipality from the list below.

Ardsley	Larchmont	Pelham Manor
Bedford	Lewisboro	Pleasantville
Briarcliff Manor	Mamaroneck (Town)	Port Chester
Bronxville	Mamaroneck (Village)	Pound Ridge
Buchanan	Mount Kisco	Rye (City)
Cortlandt	Mount Pleasant	Rye Brook
Croton-on-Hudson	Mount Vernon	Scarsdale
Dobbs Ferry	New Castle	Sleepy Hollow
Eastchester	New Rochelle	Somers

Mamaroneck	2010	Download	738 KB	740 West Boston Post Road Mamaroneck NY, 10543 Phone: (914) 381-7820
Larchmont	2010	Download	287 KB	Mr. Daniel Whittemore 120 Larchmont Avenue Larchmont, NY 10538 Phone: (914) 834-6230
Mamaroneck (V)	2010	Download	607 KB	Mr. Lloyd T. Wright 123 Mamaroneck Avenue Mamaroneck NY, 10543 Phone: (914) 777-7720
Mount Kisco	2010	Download	443 KB	Mr. Roger D Miller 104 Main Street Mount Kisco NY, 10549 Phone: (914) 864-0006
Mount Pleasant	2010	Download	1.80 MB	Mr. James J. Timmings 1 Town Hall Plaza Valhalla NY, 10595 Phone: (914) 742-2315 Ext: 2345
Pleasantville	2010	Download	544 KB	Mr. James J. Timmings 80 Wheeler Avenue Pleasantville NY, 10570 Phone: (914) 769-1886
Sleepy Hollow	2010	Download	295 KB	Mr. Fred Gross 28 Beekman Avenue Sleepy Hollow NY, 10591 Phone: (914) 366-5156
Mount Vernon		Contact Assessor		Mr. Anthony V. DeBellis 1 Roosevelt Square Mount Vernon NY, 10550 Phone: (914) 665-2325
New Castle	2010	Download	3.26 MB	Mr. Philip M Platz 200 South Greeley Avenue Chappaqua NY, 10514 Phone: (914) 238-7266
New Rochelle	2010	Download	2.04 MB	Mr. Daniel T. Whittemore 515 North Avenue New Rochelle NY, 10801 Phone: (914) 654-2054
North Castle	2010	Download	1.72 MB	Ms. Victoria Sirota 17 Bedford Road Armonk NY, 10504 Phone: (914) 273-3324
North Salem	2010	Download	753 KB	Ms. Karen A. Futia-Kazmierczak 266 Titicus Road North Salem NY, 10560 Phone: (914) 862-5214
Ossining (Town/Village)	2010	Download	7.4 MB	Mr. Fernando Gonzalez 16 Croton Avenue Ossining NY, 10562 Phone: (914) 762-8274 Ms. Denise E. Keenan

Show Desktop



Search for a Location

Your search result

Thematic Map

Show Additional Data on Map

- ☒ **Environmental Features**
 - ☐ 2 Foot Contours
 - ☒ 2-Foot Topo (Download Only) [link to download](#)
 - ☐ Aquifers
 - >100 Gallons per Minutes [link to download](#)
 - 10-100 Gallons per Minutes
 - ☐ Citizen Water Monitoring Sites
 - ☐ County Channel Lines
 - ☐ County Sewage Treatment Plants
 - ☐ County Trail System
 - Existing Off-Road Path
 - Existing Road Corridor Route
 - Original Aqueduct Route
 - Proposed Off-Road Path
 - Proposed Road Corridor Route
 - Wide Road Shoulder
 - ☐ Critical Environmental Areas
 - ☐ Digital Elevation Model
 - 305
 - 260
 - 215
 - 170
 - 125
 - 80
 - 35
 - 10
 - ☐ Drainage Divides
 - ☐ Farms, Stables, Nurseries
 - ☐ Fish and Wildlife Habitats
 - ☐ Flood Plains



Aerial Photos

1947 1960 1976 2000 2004 2007 2009 2010 Map

Search for a Location

Your search result

Thematic Map

- Show Additional Data on Map**
- Two & Three Family and Multi-Structure Proper
 - Condominiums, Apartments & Multi-Family Res
 - Common Land Homeowners Assoc.
 - Vacant Properties
 - Commercial and Retail
 - Manufacturing, Industrial and Warehousing
 - Office and Research (including Campus Office
 - Mixed Use
 - Institutional and Public Assembly
 - Transportation, Communication and Utilities
 - Cemeteries
 - Public Parks and Parkway Lands
 - Private Recreation
 - Nature Preserves
 - Water Supply Lands
 - Interior Water Bodies
 - ☒ LIDAR Index (Download Only)
 - ☒ NYS Regulated Wetlands
 - ☒ Open Space
 - County Parklands
 - State Parklands
 - Local Parks
 - Nature Preserves
 - Private Recreation
 - Public Institutions
 - Private Institutions
 - Public Non-Park Lands
 - Cemeteries
 - Water Supply Lands



MAPPING WESTCHESTER COUNTY

[View LiDAR Metadata](#)

[View More Information on LiDAR](#)

LiDAR Download Instructions (.las file format)

1. Make the Layer List Visible

Select the "Show Additional Data on Map" along the panel on the right side of the application.

Search for a Location


Your search result

Thematic Map

Show Additional Data on Map

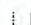

2. Expand the Environmental Category

Click the plus sign next to Environmental to expand the category.




 **Environmental**
Click to open

3. Make LiDAR Layer Visible


Check the box next to LiDAR Index (Download Only) to make the layer visible.

 ☐ **LiDAR Index (Download Only)** 
Check to show

4. Locate Area of Interest

Zoom to the area of interest using zoom in/out (, ) or geocode tool () .

5. Download Tile

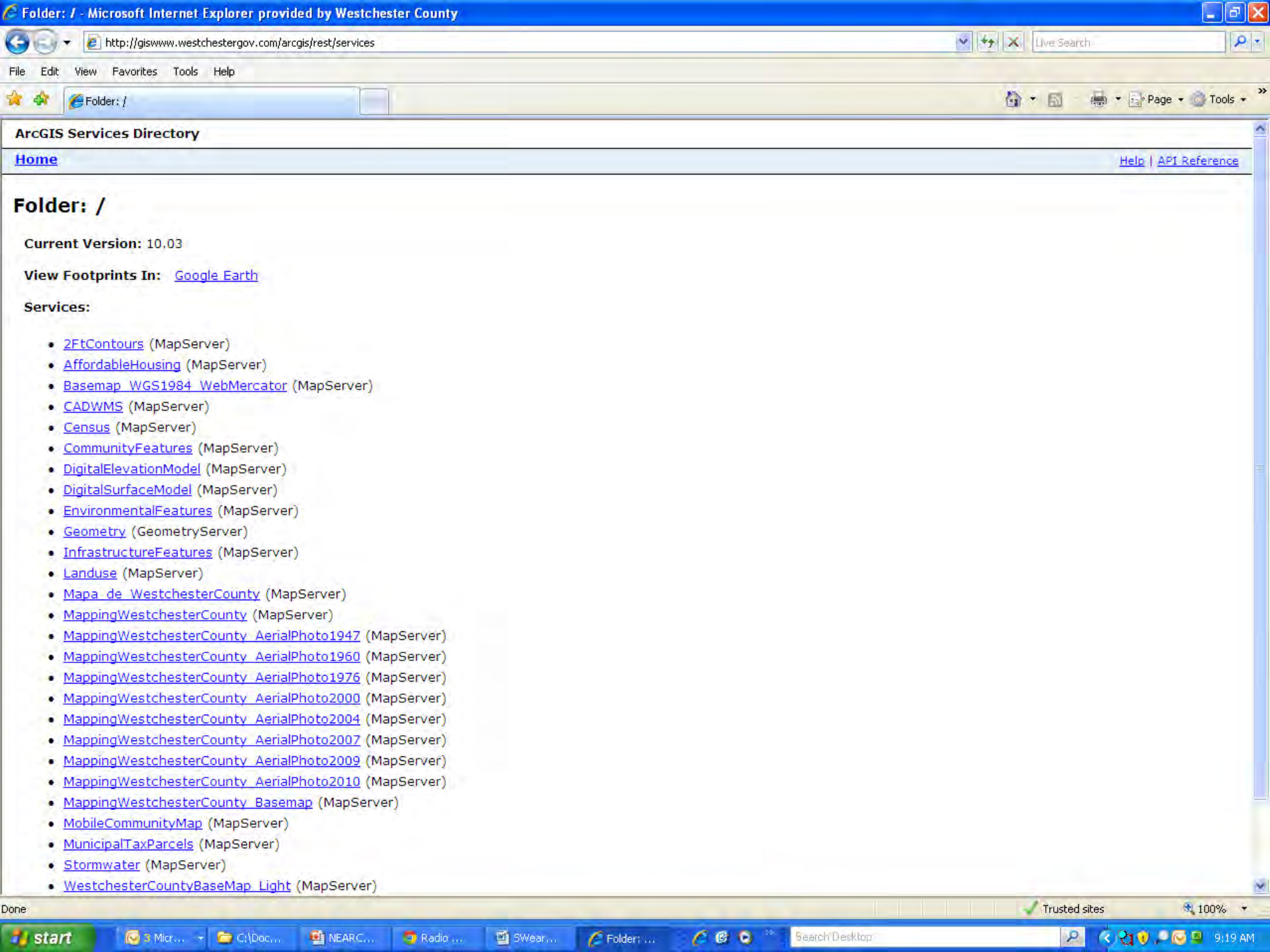
- Select the Identify tool (.
- Select the desired tile.
- In the results box, click the hyperlinked Tile Number.
- Save zip file.

6. Repeat Step 5 Until All Desired Tiles Have Been Downloaded

OK

[LiDAR DISCLAIMER](#)

Map Services



Folder: /

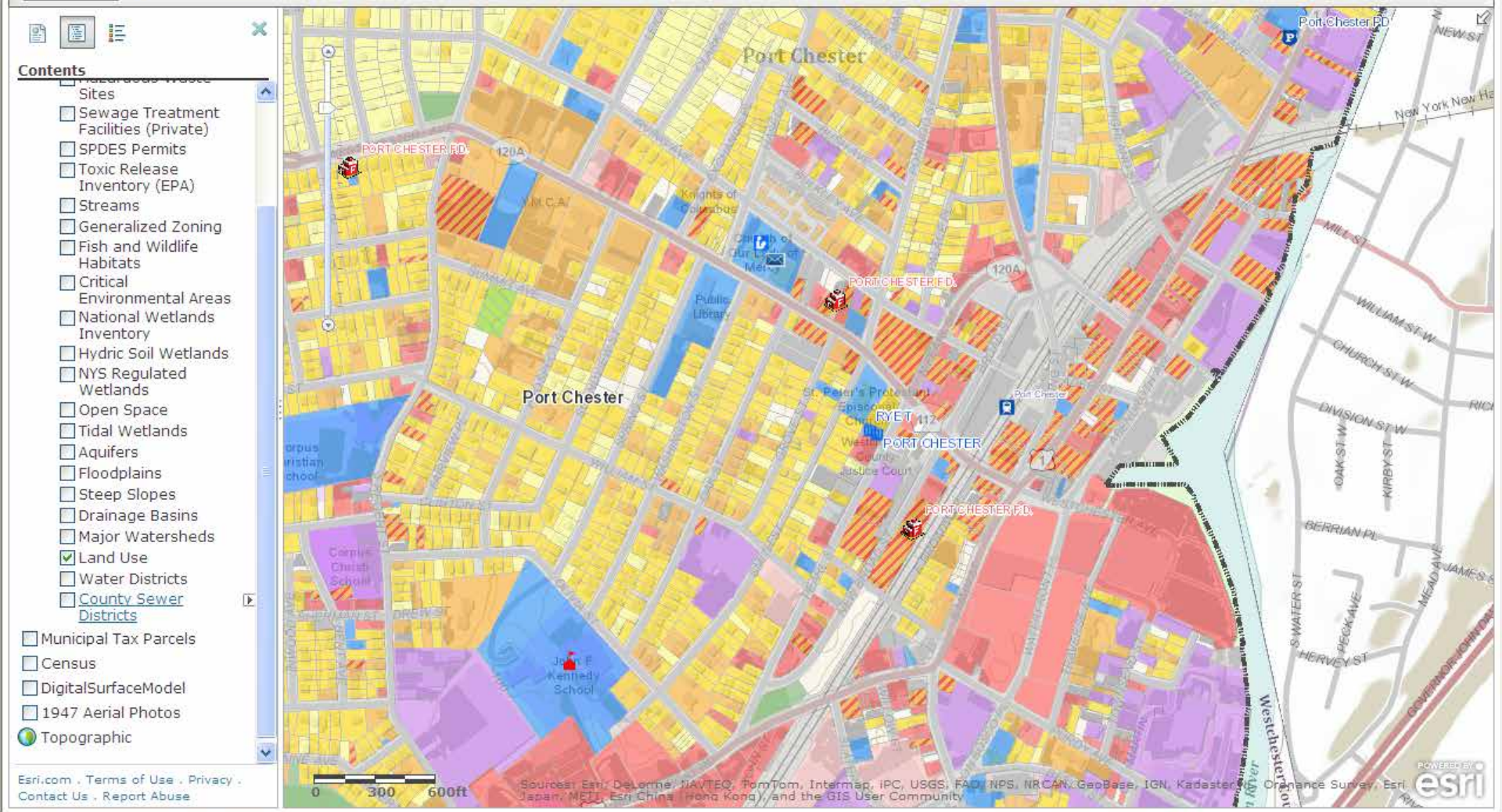
Current Version: 10.03

View Footprints In: [Google Earth](#)

Services:

- [2FtContours](#) (MapServer)
- [AffordableHousing](#) (MapServer)
- [Basemap_WGS1984_WebMercator](#) (MapServer)
- [CADWMS](#) (MapServer)
- [Census](#) (MapServer)
- [CommunityFeatures](#) (MapServer)
- [DigitalElevationModel](#) (MapServer)
- [DigitalSurfaceModel](#) (MapServer)
- [EnvironmentalFeatures](#) (MapServer)
- [Geometry](#) (GeometryServer)
- [InfrastructureFeatures](#) (MapServer)
- [Landuse](#) (MapServer)
- [Mapa_de_WestchesterCounty](#) (MapServer)
- [MappingWestchesterCounty](#) (MapServer)
- [MappingWestchesterCounty_AerialPhoto1947](#) (MapServer)
- [MappingWestchesterCounty_AerialPhoto1960](#) (MapServer)
- [MappingWestchesterCounty_AerialPhoto1976](#) (MapServer)
- [MappingWestchesterCounty_AerialPhoto2000](#) (MapServer)
- [MappingWestchesterCounty_AerialPhoto2004](#) (MapServer)
- [MappingWestchesterCounty_AerialPhoto2007](#) (MapServer)
- [MappingWestchesterCounty_AerialPhoto2009](#) (MapServer)
- [MappingWestchesterCounty_AerialPhoto2010](#) (MapServer)
- [MappingWestchesterCounty_Basemap](#) (MapServer)
- [MobileCommunityMap](#) (MapServer)
- [MunicipalTaxParcels](#) (MapServer)
- [Stormwater](#) (MapServer)
- [WestchesterCountyBaseMap_Light](#) (MapServer)

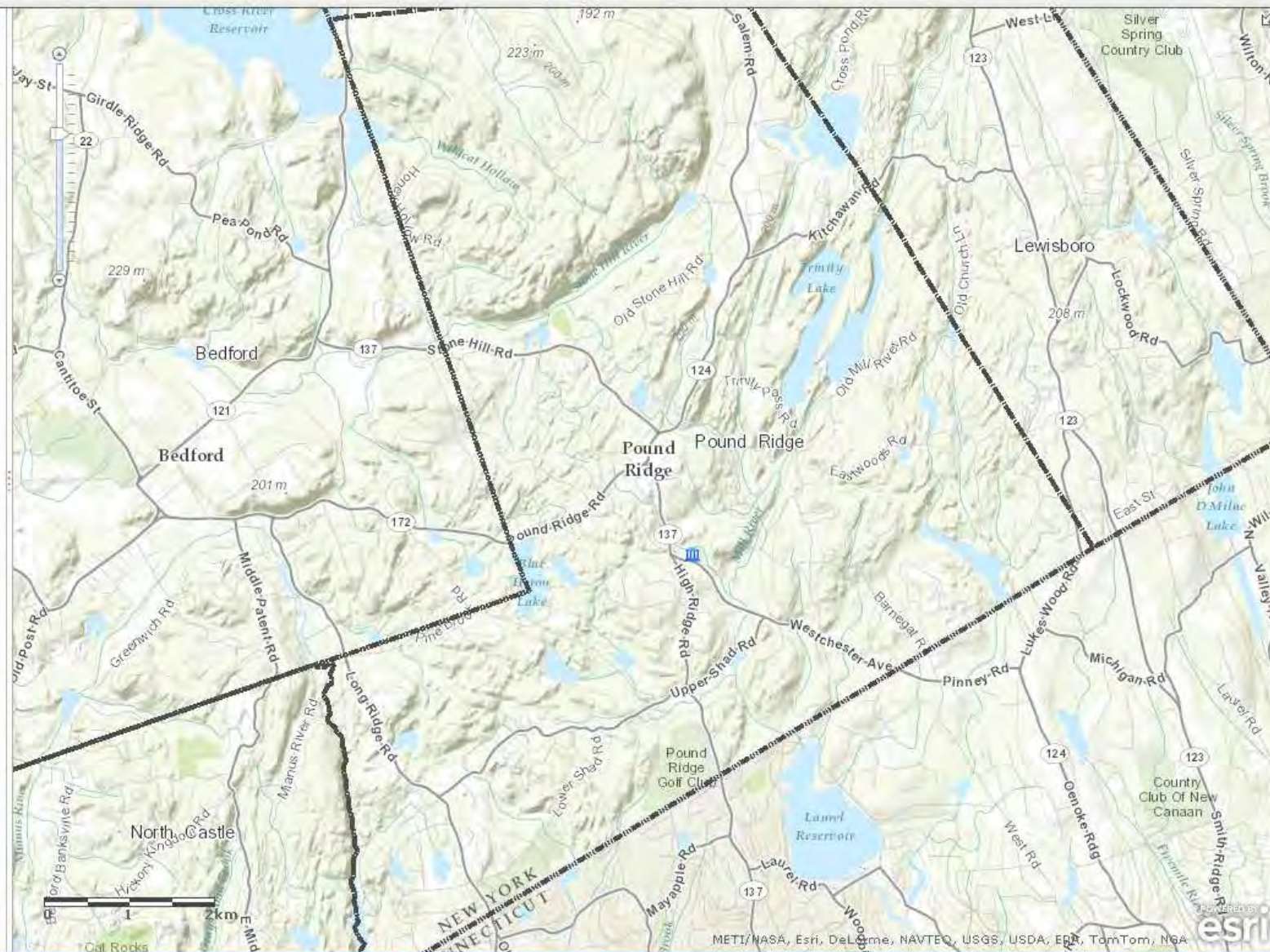






Contents

- ☒ Catch Basin Update - Catch Basin Update
- ☒ Catch Basins
- ☒ Outfalls
- ☒ Culverts
- ☒ Dry Hydrants
- ☒ CommunityFeatures
- ☐ EnvironmentalFeatures
- ☐ InfrastructureFeatures
- ☐ DigitalSurfaceModel
- ☐ USGS Quads
- ☐ Air Photos 1947
- ☐ Air Photos 1960
- ☐ Air Photos 2009
- ☐ Leaf-on Air Photos (USDA 2011)
- ☒ Topographic





- The Property Portal is a collection of applications that allow us to streamline the delivery of a wide range of services.
- It facilitates convenient access to basic property information at no cost. Additional information is available to Registered Professional. [Learn more](#)

[Login](#) | [Register](#)

ONLINE INFORMATION PORTAL

[Online Portal](#) | [Applications](#) | [FAQ](#) | [Municipal Site](#)

Property Search

Use this tool to find...

- Block and lot numbers
- Property Assessment
- Ownership information
- Property card (Assessment), etc.

To begin, enter an address and click search

search

Block: Lot:

[Adv. Search](#)

Maps are for general information only and cannot be used in lieu of a survey. [Full Disclaimer](#)

Property Search sponsored by: **NYGIS GROUP**

[Property Search](#)



[Permits & Approvals](#)



[Professional Registration](#)



[Multiple Dwelling Registration](#)



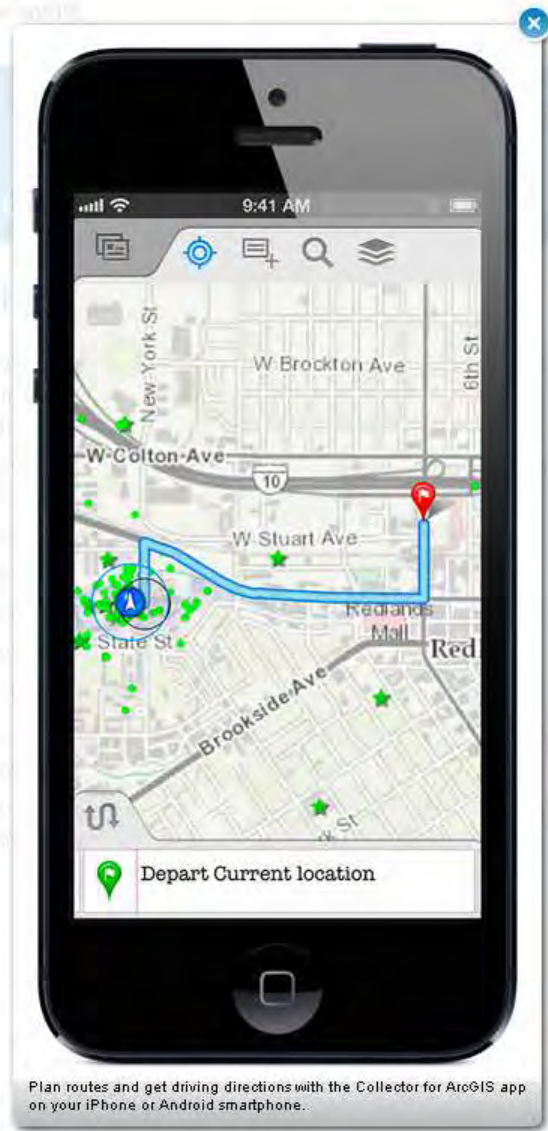
[Radius Map](#)



[Title Search](#)



Mobile GIS w/ArcGIS.com



Plan routes and get driving directions with the Collector for ArcGIS app on your iPhone or Android smartphone.



Understanding our world.

[Store](#) | [Contact Us](#) | [Careers](#)

Search

[Home](#) [Industries](#) [Products](#) [Training](#) [Support](#) [Services](#) [Events](#) [News](#) [About](#)

Products

Apps for Smartphones and Tablets

Overview

Collector App

ArcGIS App

Windows 8 App

For Developers

System Requirements

Brochures/Articles/ Podcasts

Demos



Collector App

Collector for ArcGIS improves your productivity with intuitive data collection. It's designed specifically for iPhone and Android smartphones.

- Capture, update, and report spatial and tabular information directly from your Android or Apple device.
- Plan routes and get directions.
- Improve your data quality with data-driven forms.
- Capture photos and video.
- Integrate information into your organization's GIS.
- Configure the app to fit your organization's workflow.

Data captured in the field using the Collector app can be displayed in an [Operations Dashboard](#).

Download the free Collector app from the [Apple App Store](#) or [Google Play](#) and [get started](#).



Plan routes and get driving directions with the Collector for ArcGIS app on your iPhone or Android smartphone.

[Esri Home](#) » [Products](#)

Follow Us

www.esri.com/software/arcgis/smartphones/~/_media/Images/Content/Software/arcgis/smartphones/graphics/collector-app-lg.jpg

HOME

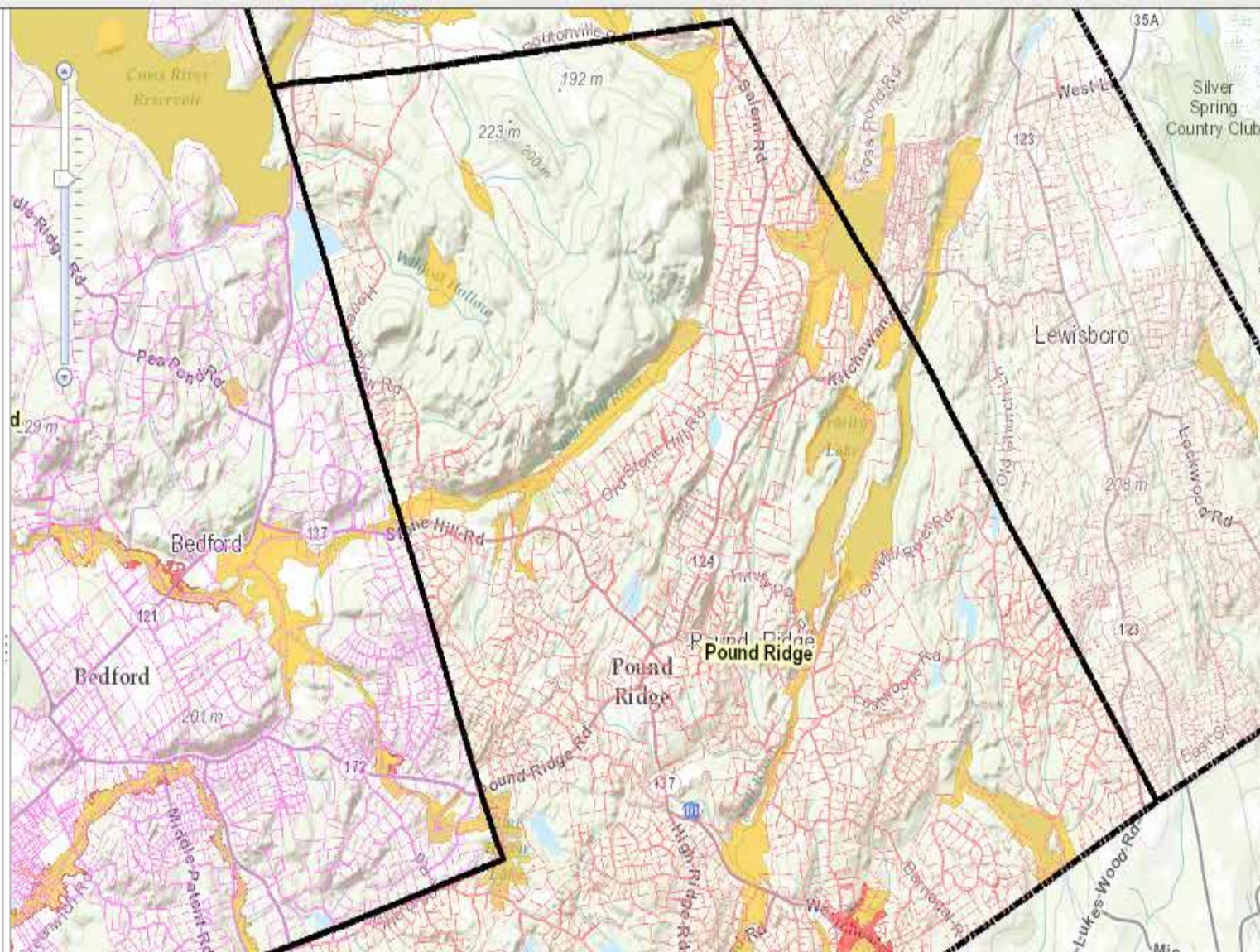
Pound Ridge MS4 Stormwater Feature Editing

New Map My Content

[Details](#) [Add](#) [Basemap](#) [Save](#) [Share](#) [Print](#) [Directions](#) [Measure](#) [Bookmarks](#)

Contents

- ☐ PoundRidgeMS4 - Catch Basins
- ☐ PoundRidgeMS4 - Outfalls
- ☒ MunicipalTaxParcels
- ☒ CommunityFeatures
- ☒ EnvironmentalFeatures
- ☐ 2007 Aerial Photo
- ☒ Topographic



HOME

Ossining Town Stormwater MS4 Web Map

New Map My Content Help Sign Out

Details Add Edit Basemap Save Share Print Directions Measure Bookmarks

Legend

Ossining Town Stormwater MS4 Feature Service - Catch Basins

- Catch Basins
- Drainage Manholes
- Other

Ossining Town Stormwater MS4 Feature Service - Outfalls

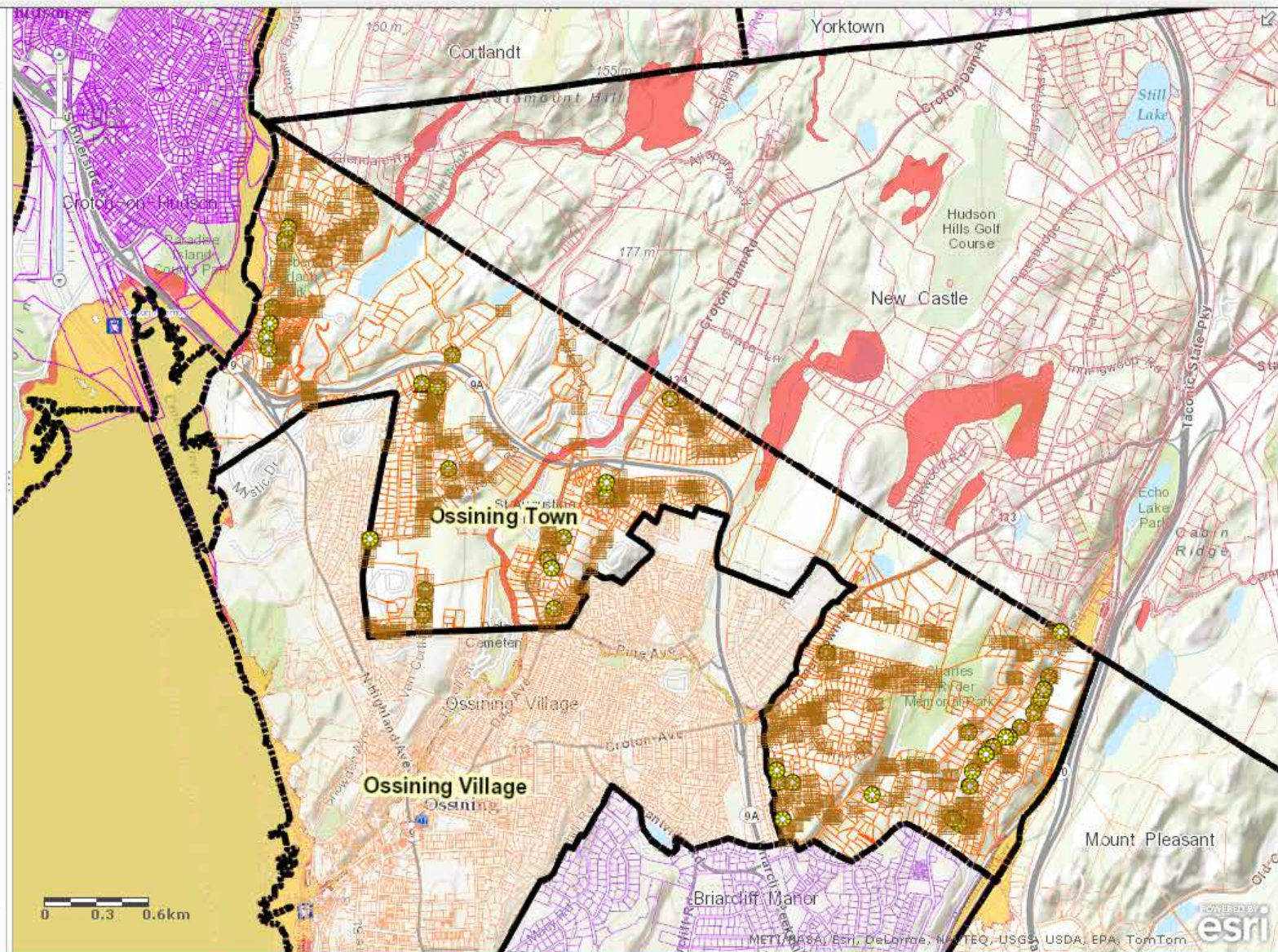


Community Features

- Municipal Buildings
- Hospitals
- Train Stations
- Municipal Boundaries

Environmental Features

- Floodplains
 - 100 Year Flood Plain
 - 500 Year Flood Plain



HOME

Ossining Town Stormwater MS4 Web Map

New Map My Content Help Sign Out

Details Add Edit Basemap Save Share Print Directions Measure Bookmarks

Add Features

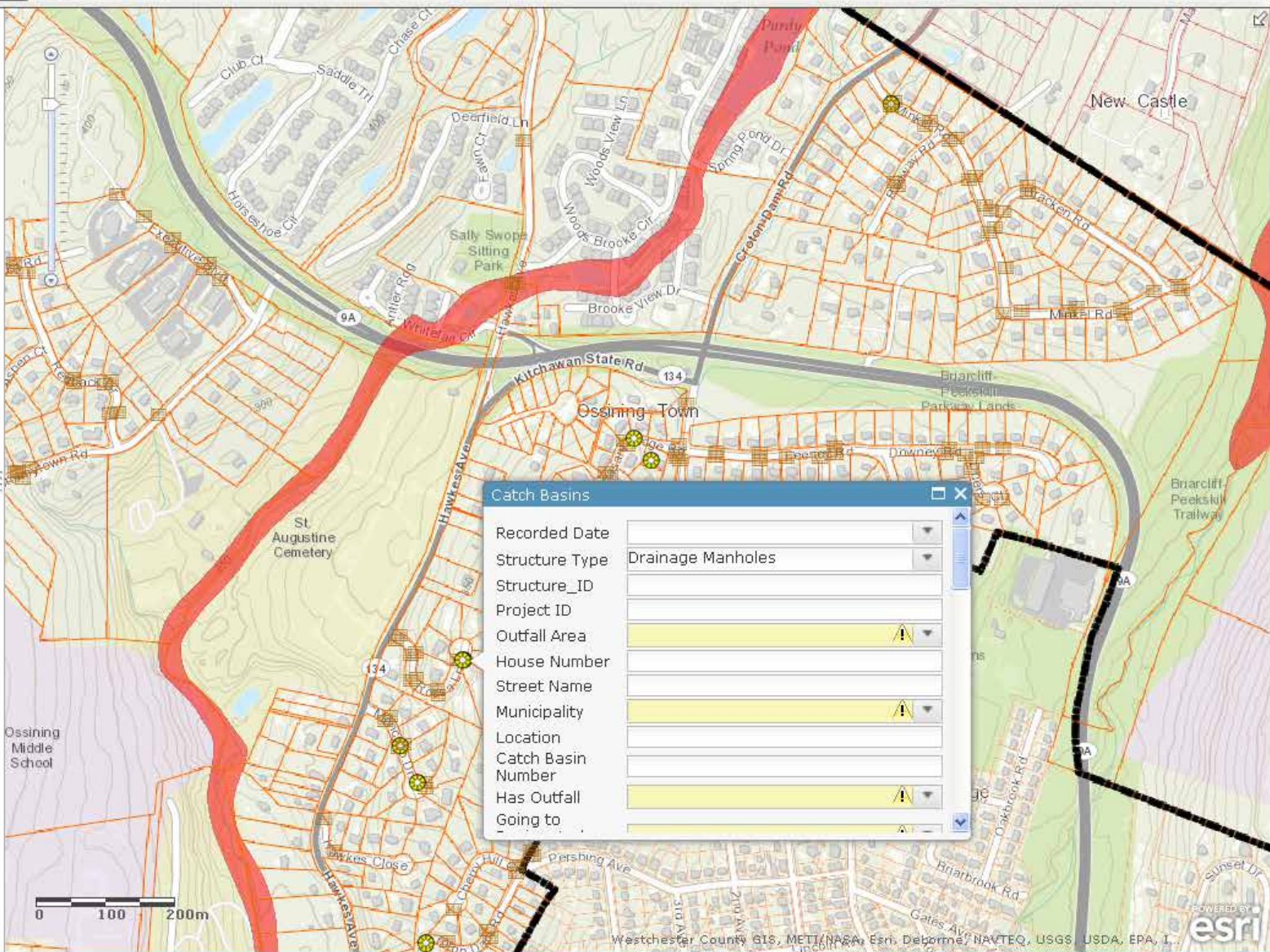
Catch Basins

- Drainage Manholes
- Catch Basins
- Other

Outfalls



Outfall



Undo Redo

HOME

Ossining Town Stormwater MS4 Web Map

New Map My Content Help Sign Out

Details Add Edit Basemap Save Share Print Directions Measure Bookmarks

Add Features

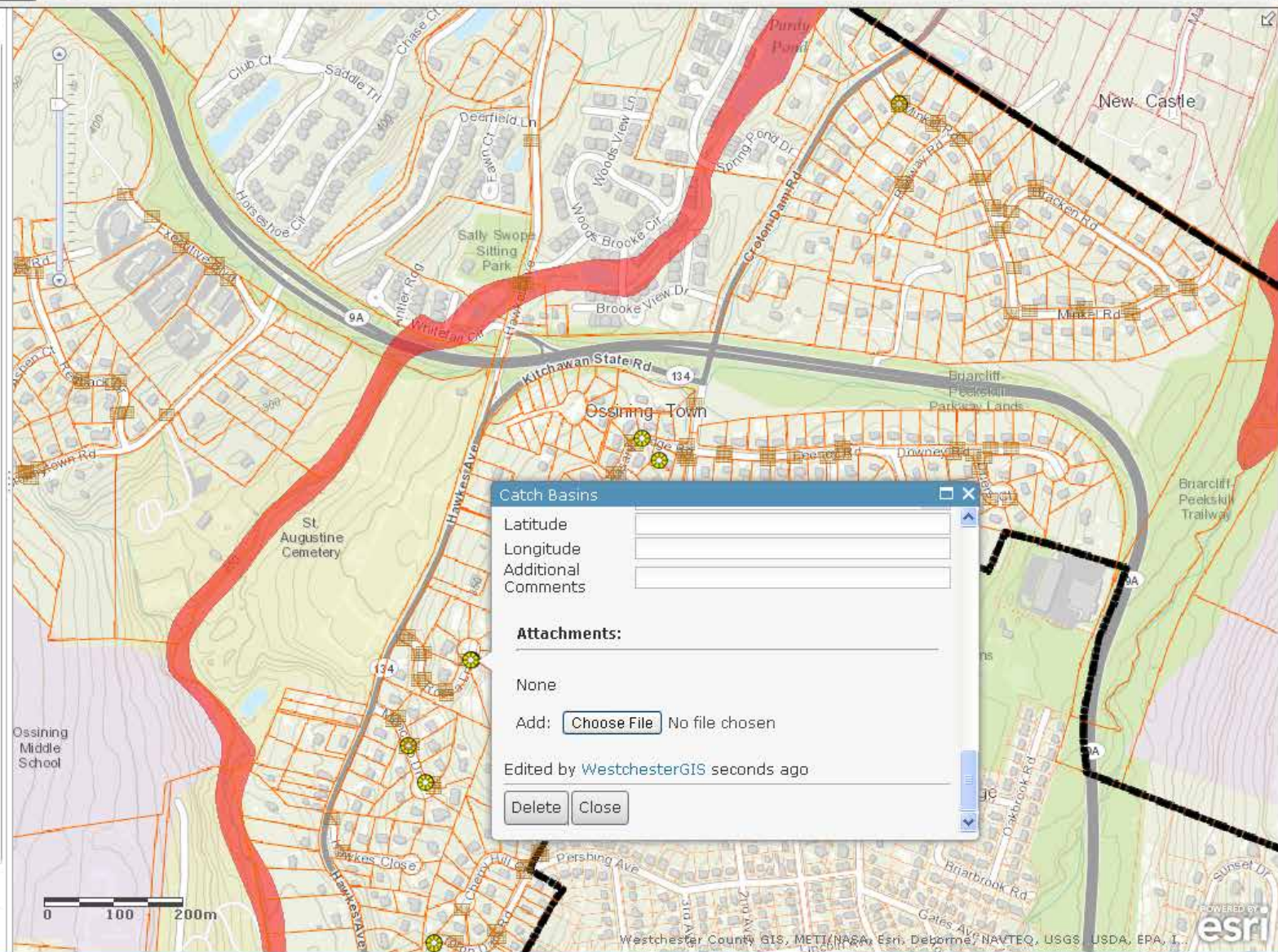
Catch Basins

- Drainage Manholes
- Catch Basins
- Other

Outfalls



Outfall



Catch Basins

Latitude

Longitude

Additional

Comments

Attachments:

None

Add:

Choose File

 No file chosen

Edited by WestchesterGIS seconds ago

Delete

Close

Parting Thoughts

- **Big Assumption:** Agency is available to serve as *The Cloud*.
- **Another Assumption:** Cloud discussion furthers collaboration in difficult times (However, our experience suggests so).
- **Return on Investment (ROI):** I don't have one. Both obvious (software, infrastructure, app development, DUPLICATION) & not-so-obvious.
- **It's Cloudy & Not so Clear:** Meaning the GIS Cloud is different things to different organizations. GIS technology is a perfect fit for County/local governments & Regional organizations.
- **Just an Example:** We're only scratching the surface for what we can do for local governments.
- **Not Going Away:** Cloud concept is here to stay in the GIS arena. Chances are local governments will use a variety of Cloud components. How products/platforms like ArcGIS.com fit in – TBD.

Questions

Sam Wear

stwl@westchestergov.com

<http://giswww.westchestergov.com>

914-995-3047