

Spatial Trends in New England Agriculture

Selected slides from a presentation :

Aaron Dushku, GIS Specialist, USDA- Natural
Resources Conservation Service-
Massachusetts

and

Kip Kolesinskas, Consulting Conservation
Scientist, American Farmland Trust

Keep New England Farmland in Farming: **A Regional Convening**

May 8, 2013



Convening Objectives:

- § **Deepen understanding** about the region's farmland base and its capacity to meet food, agriculture and resource needs
- § **Share information** about public and private programs, projects and initiatives that are impacting the region's farmland base
- § **Explore opportunities** for further work and collaboration around farmland:
 - § Protection
 - § Access
 - § Restoration
 - § Resiliency
 - § Environmental markets

Major New England Crops

Non-agricultural land or water

Crop types (CDL 2012)

Other crops (vegetables, fruits, horticulture)

Hay

Apples

Barley

Blueberries

Corn

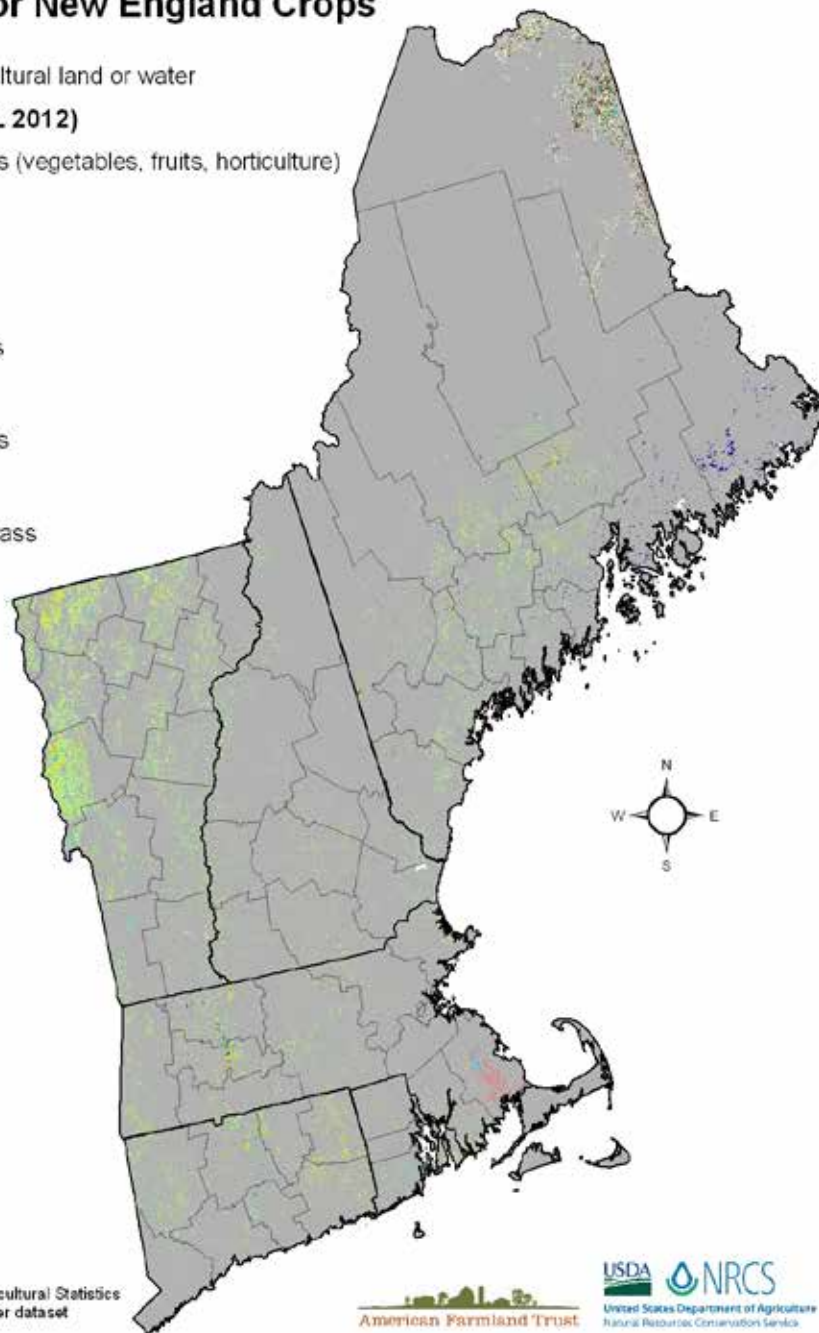
Cranberries

Oats

Pasture/Grass

Potatoes

Rye







Source:
~2012 USDA National Agricultural Statistics
Service Cropland Data Layer dataset
(NASS-CDL)

American Farmland Trust

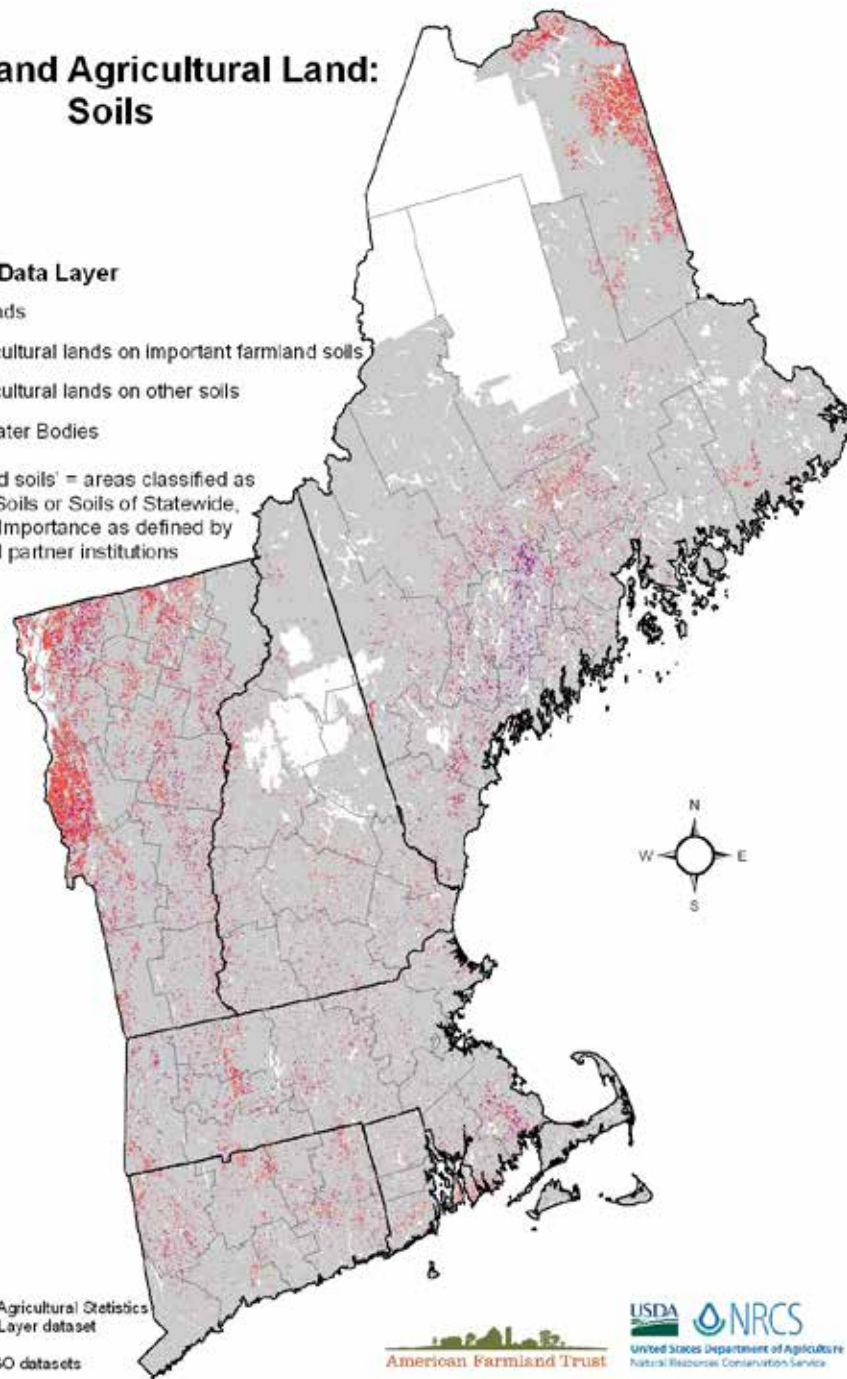
USDA NRCS
United States Department of Agriculture
Natural Resources Conservation Service

New England Agricultural Land: Soils

2012 Cropland Data Layer

-  All other lands
-  Active agricultural lands on Important farmland soils
-  Active agricultural lands on other soils
-  No Data/Water Bodies





'Important farmland soils' = areas classified as Prime Farmland Soils or Soils of Statewide, Unique or Local Importance as defined by USDA and partner institutions



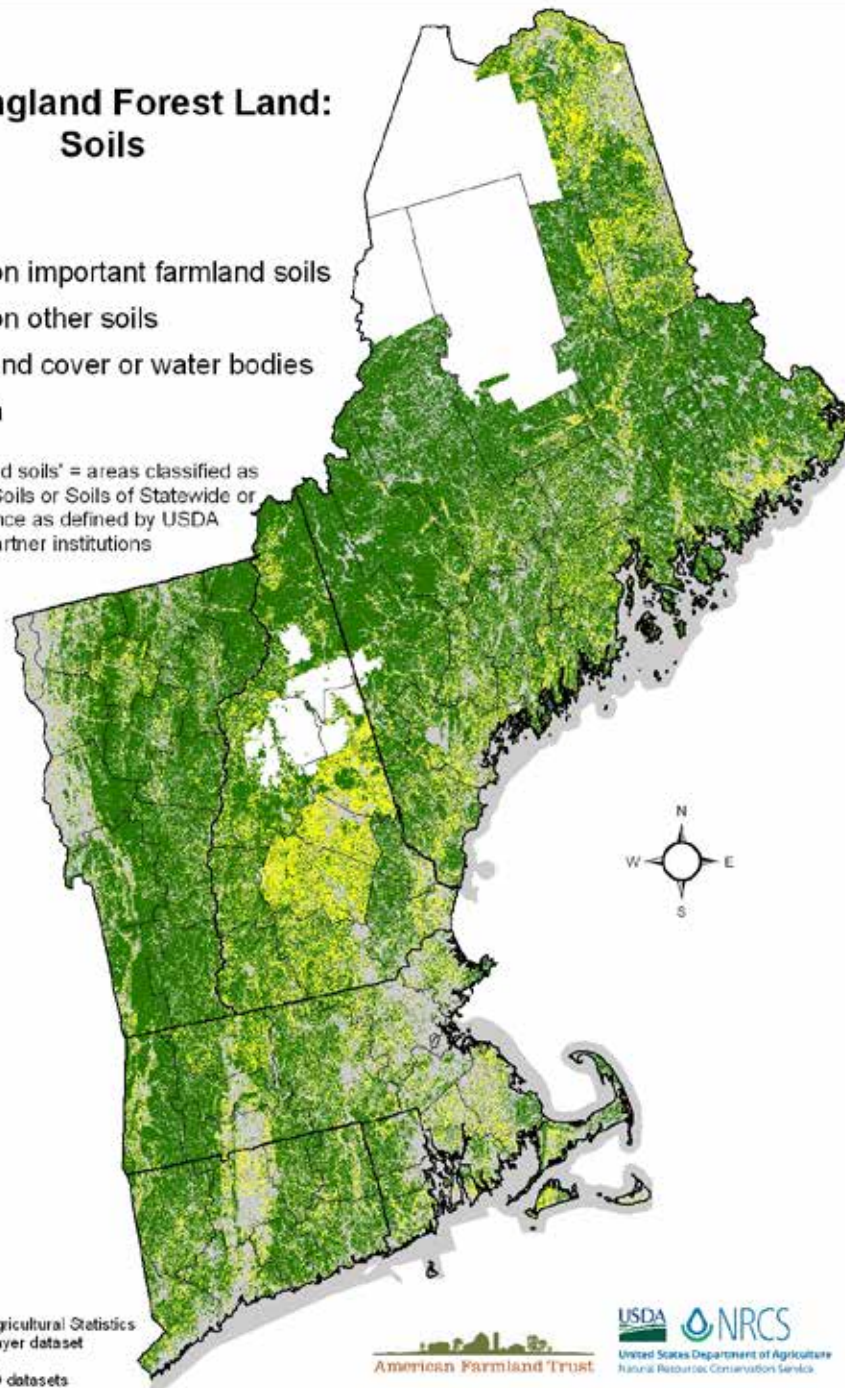
Sources:

- 2012 USDA National Agricultural Statistics Service Cropland Data Layer dataset (NASS-CDL)
- USDA-NRCS SSURGO datasets

New England Forest Land: Soils

-  Forest on important farmland soils
-  Forest on other soils
-  Other land cover or water bodies
-  No Data

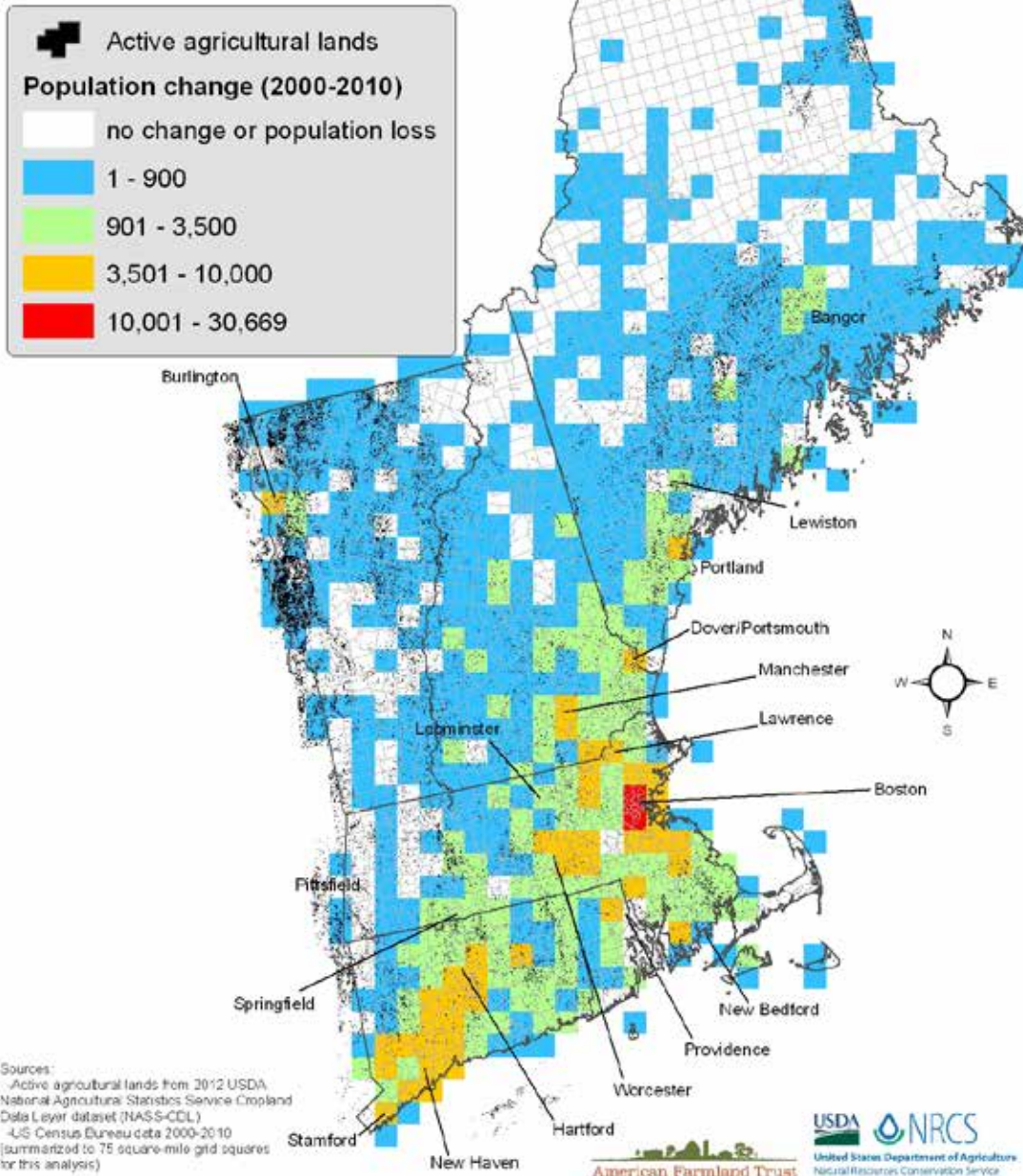
'Important farmland soils' = areas classified as Prime Farmland Soils or Soils of Statewide or Local Importance as defined by USDA and partner institutions







Sources:

- 2012 USDA National Agricultural Statistics Service Cropland Data Layer dataset (NASS-CDL)
- USDA-NRCS SSURGO datasets

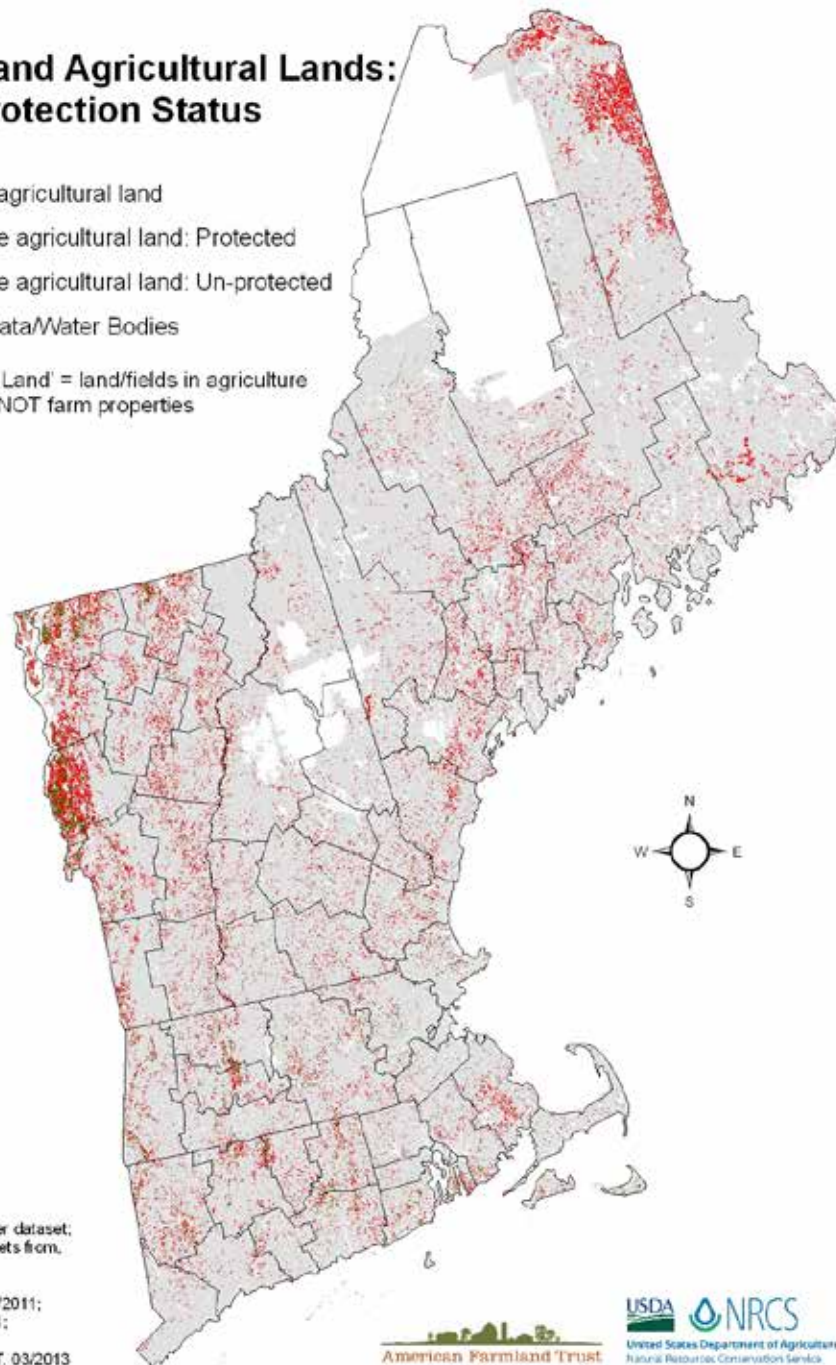
New England Population Trends: 2000-2010



New England Agricultural Lands: Protection Status

-  Non-agricultural land
-  Active agricultural land: Protected
-  Active agricultural land: Un-protected
-  No Data/Water Bodies

'Agricultural Land' = land/fields in agriculture
NOT farm properties



Sources:
-2006 NLCD landcover dataset;
-Protected land datasets from:
CT DEP, 08/2011;
MassGIS, 06/2012;
ME Office of GIS, 03/2011;
NH-GRANIT, 05/2011;
RIDEM, 06/2011;
VCGI, 08/2009 & VLT, 03/2013

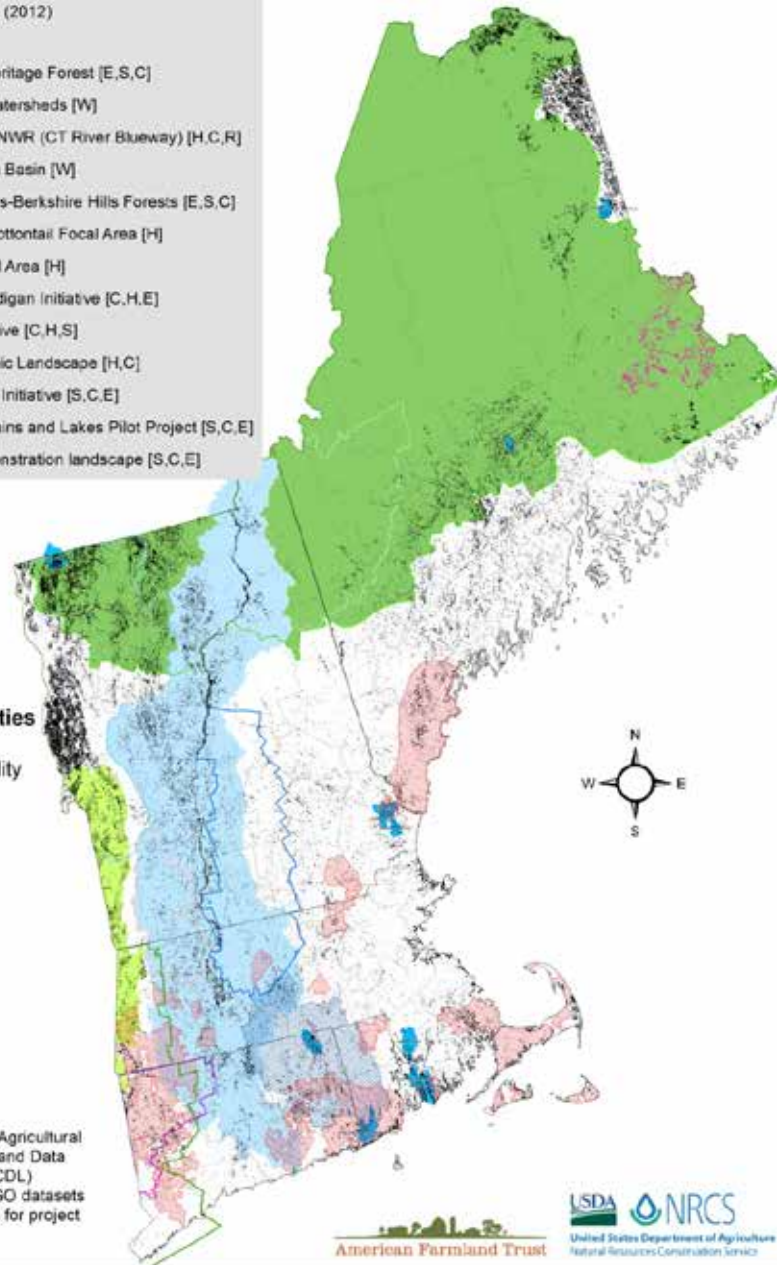
New England Conservation Focus Areas



Focus Area Priorities

C - Conversion
 E - Economic Viability
 H - Habitat
 R - Recreation
 S - Stewardship
 W - Water Quality

Sources:
 -2012 USDA National Agricultural
 Statistics Service Cropland Data
 Layer dataset (NASS-CDL)
 -USDA-NRCS SSURGO datasets
 -various other sources for project
 boundaries



Maps and Presentations from the
Convening soon to be available at:
American Farmland Trust
www.farmland.org/newengland

For more information:

Kip Kolesinskas, kkolesinskas@farmland.org

Aaron Dushku, Aaron.Dushku@ma.usda.gov