

EMBEDDING GIS IN THE LIBERAL ARTS CURRICULUM –

WHERE WE'RE AT IN YEAR 3 & WHERE WE'RE HOPING TO GO WITH THIS AT BUCKNELL

Overview



- .. Who am I? What do I do?
- .. Evolving strategy
- .. Greasing the wheels
- .. Where we're at now
- .. What's next

Who am I? What do I do?

GIS Specialist

- ✧ New position at Bucknell
- ✧ Work out of Library & IT Division
- ✧ Integrate GIS & spatial thinking across the curriculum in teaching and research
 - n Serve as a resource for faculty and students

Getting GIS in early...

- Into courses required in 1st/2nd year:
 - ✧ Foundation seminars
 - ✧ Residential colleges
 - ✧ Transition to college workshops
 - ✧ Methods classes
 - ✧ Integrated perspectives (IP) courses
 - n New requirement
 - n Brand new courses
 - n Interdisciplinary/holistic approach = perfect fit for GIS

Getting GIS in often...

- Into seminal learning experiences
 - ✧ Faculty-led student research
 - ✧ Independent student research
 - ✧ Independent study
 - ✧ Senior design courses
 - ✧ Honors theses
 - ✧ Service learning & community engagement

Getting GIS in 'just the right amount'...

- ArcGIS

- ❑ GEOG204, ENGR101, ENST302

- GoogleEarth/Maps

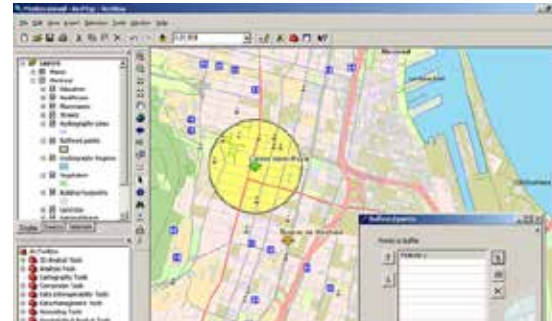
- ❑ HUMN272, ENGL224,
Environmental Residential College

- Data/Map Tools

- ❑ RELI233, ECON312

- Custom web map apps

- ❑ Still in the works
 - n 'New Orleans in 12 Movements' IP course
 - n HUMN 290, 'Susquehanna Stories'
 - n HIST275, 'Mills, Milling & Local History'



Greasing the wheels

Resources & incentives

Library & IT budget

- n ESRI site license
- n Stipends for course revision
- n GIS student assistants

3 year Mellon grant (we're in year 2)

- n Stipends for faculty attending GIS workshops
- n Stipends for faculty who revise courses to include GIS
- n Stipends for student researchers to develop data for use in courses that integrate GIS
- n Stipends for student researchers to collaborate on faculty research projects
- n Money to buy data and/or pay consultants

Where we're at now

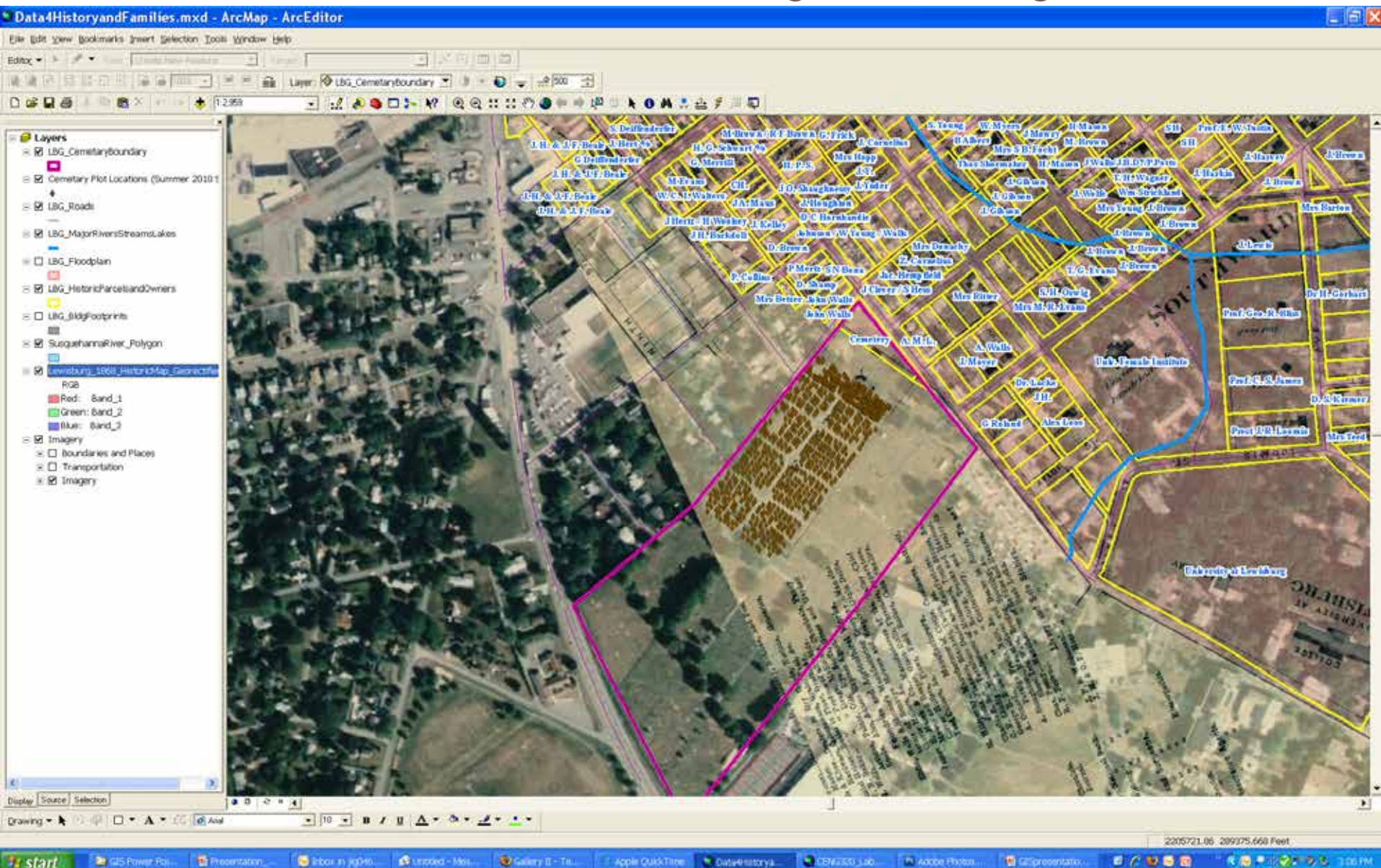


- Snapshot of GIS in teaching & research

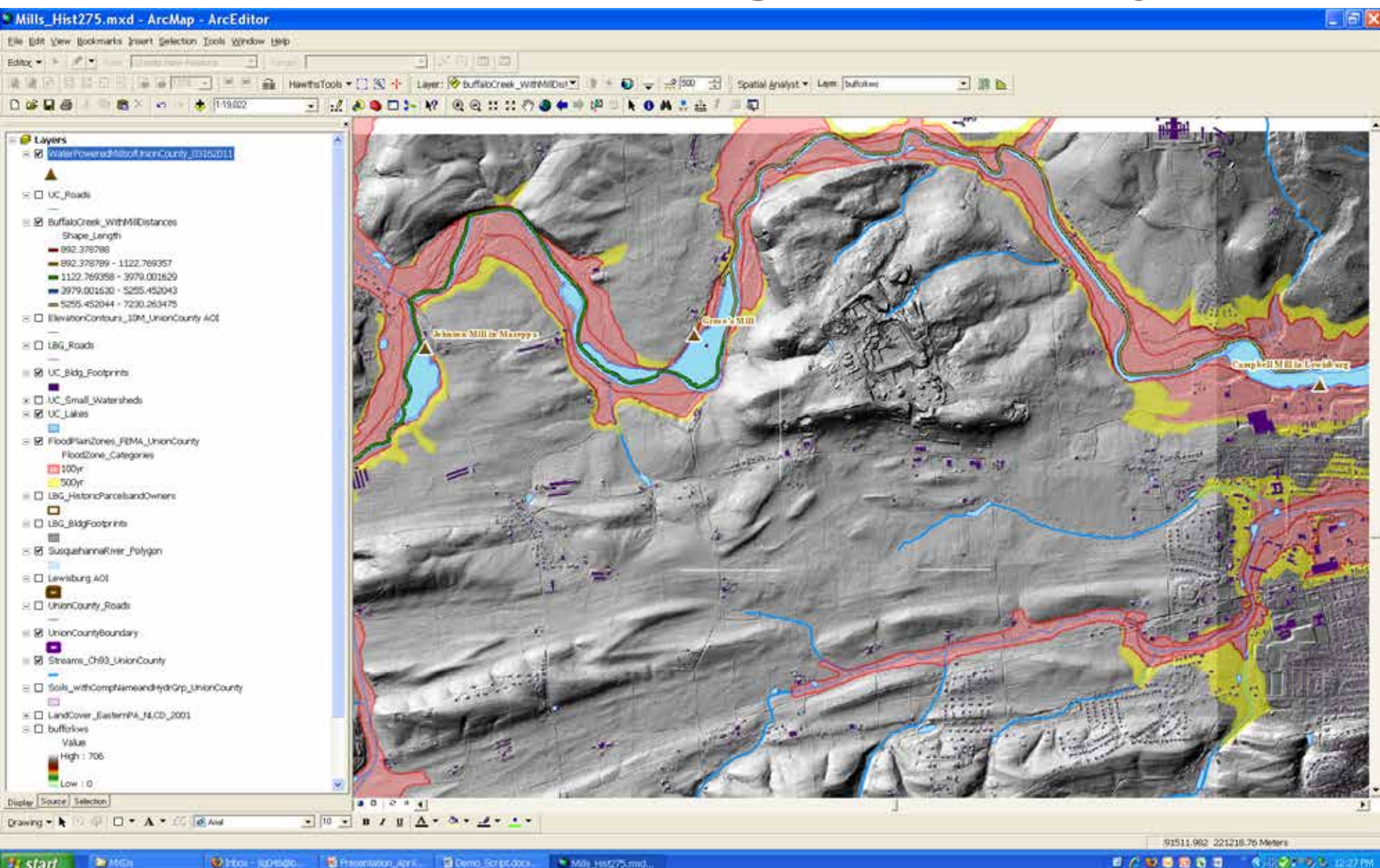
GIS in teaching across Bucknell

- .. BIOL 353 (Ecosystem Ecology)
- .. BIOL 415 (Conservation Biology)
- .. BOTS (Bucknell Semester on the Susquehanna)
- .. CENG 305 (GIS Applications for Engineering)
- .. CENG 320 (Water Resources Engineering)
- .. CENG 330 (Introduction to Transportation Planning)
- .. CENG 421 (Hydrology)
- .. CENG 42x (Groundwater Hydrology)
- .. CENG 422 (River Mechanics)
- .. CENG 432 (Urban & Regional Planning)
- .. CENG 490 (Senior Design)
- .. CSCI 361 (Software Engineering)
- .. ECON 102 (Methods)
- .. ECON 312 (Health Economics)
- .. ENGL 224 (Visions of the Susquehanna)
- .. ENGR 101 (Engineering Graphics)
- .. ENST 200 (Acquiring Environmental Knowledge)
- .. ENST 211 (Environmental Pollution & Control)
- .. ENST 302 (Environmental Research Methods)
- .. ENST 255 (Environmental Justice)
- .. FOUN "Families in History and History in Families"
- .. FOUN "Blue Highways" foundation seminar
- .. GEOG 101 (Introduction to Human Geography)
- .. GEOG 175 (Landforms of the World)
- .. GEOG 204 (Applied GIS)
- .. GEOG 257 (Global Environmental Change)
- .. GEOG 332 (Evolution, Ecology & Human Impact)
- .. GEOG 345 (Food & the Environment)
- .. GEOL 103 (Physical Environmental Geology)
- .. GEOL 230 (Environmental GIS)
- .. GEOL 310 (Applied Environmental Geomorphology)
- .. GEOL 320 (Flood Analysis)
- .. HIST 275 (Mills, Milling and Local History)
- .. HUMN 128 (Myth, Reason, Faith)
- .. HUMN 272: (Nature and Enlightenment)
- .. HUMN 290 (Susquehanna Country)
- .. HUMN 301 (Brain, Mind, and Culture)
- .. PHYS 147 (Energy & Sustainability)
- .. PSCI 140 (American Politics)
- .. RELI 233 (Global Feminism & Religion)
- .. UNIV 266 (Sustainable Building Design)
- .. WMST 233 (Global Feminism & Religion)
- .. Susquehanna Summer Writer's Institute
- .. Environmental Residential College

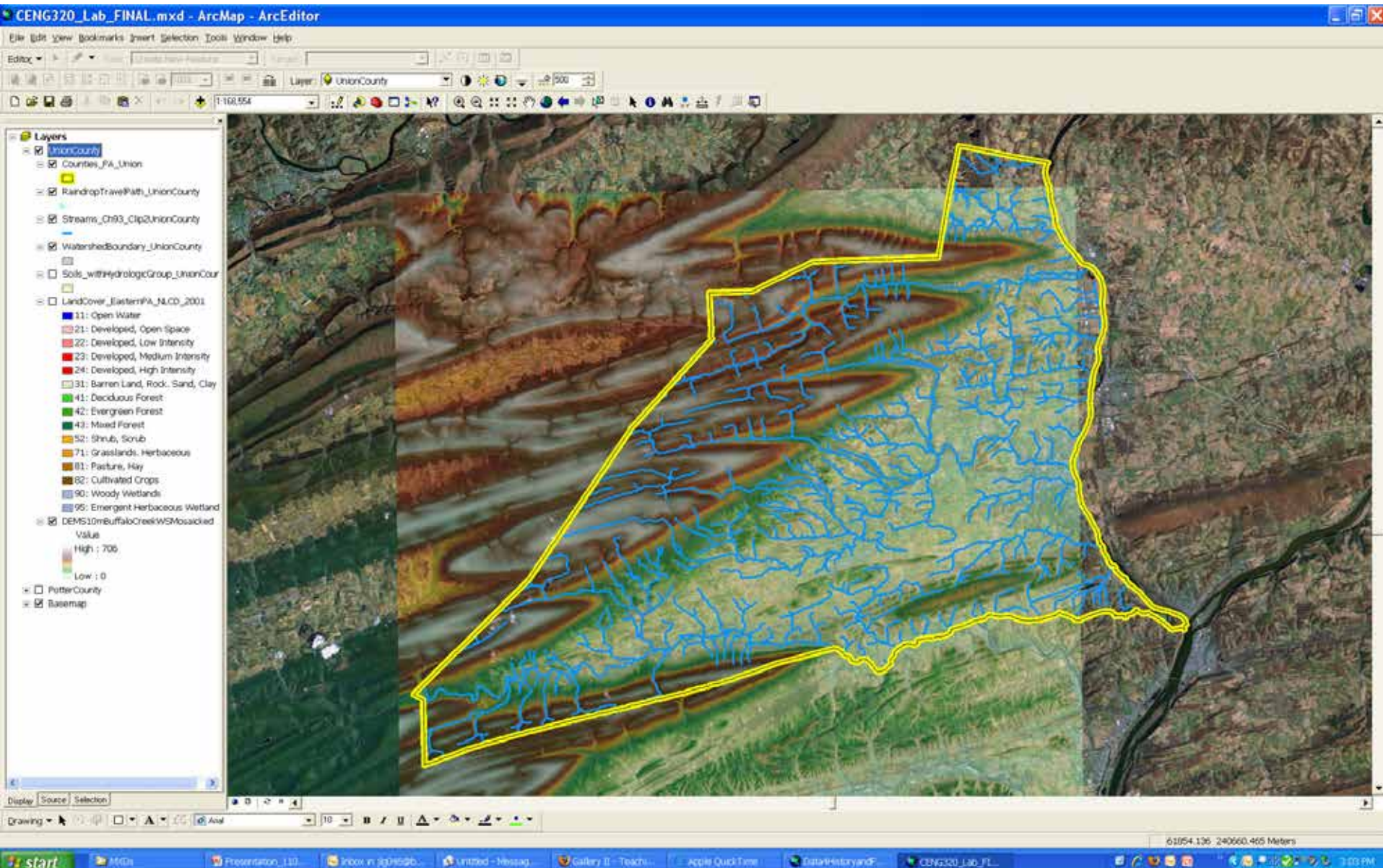
FOUN 091 – Families in History & History in Families



HIST 275 – Mills, Milling & Local History



CENG 320 – Water Resources Engineering

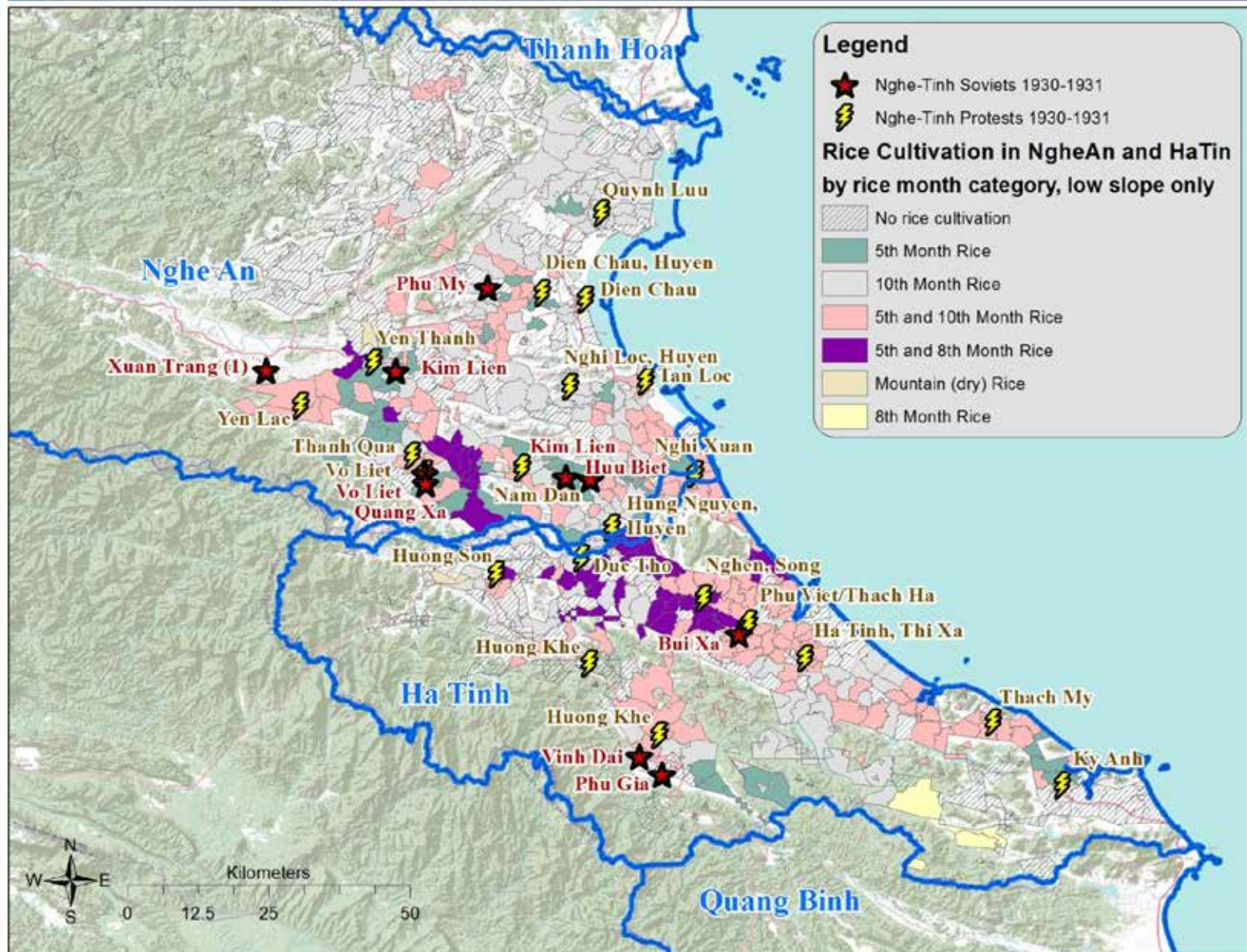


GIS in research across Bucknell

- .. Environmental activism in Kyrgyzstan (Amanda Wooden)
- .. Stories of the Susquehanna (Alf Siewers, Katie Faull, Ben Marsh, Duane Griffin)
- .. Susquehanna Valley Summer Writer's Institute (Alf Siewers, Amanda Wooden)
- .. Susquehanna River Initiative (Ben Hayes, Matt McTammany)
- .. Beaucarnot Diary (David Del Testa)
- .. Turtle Species Range Distributions (Tristan Stayton)
- .. Green Building (Beth Duckles)
- .. Inside Out (Coralyn Davis)
- .. China Network Analysis (Song Chen)
- .. Newt Species Ranges (Mizuki Takahashi)
- .. New Mexico Plutons (Chris Daniels)
- .. Campus Greening Initiative (Duane Griffin, Michelle Oswald)
- .. Sea Level Rise & Transportation Planning (Michelle Oswald)
- .. Local Mills (Tom Rich, David Del Testa)
- .. Hill Fort Viewshed Analysis (Kevin Daly)
- .. Fluvial environments (Matt McTammany)
- .. Bridge safety (Jessica Newlin)
- .. Bucknell Arboretum Project (Duane Griffin, Mark Spiro)
- .. Geisinger Obesity Project (Carl Milofsky)
- .. Miller Run Restoration Project (Matt McTammany, Craig Kochel, Dina El-Mogazi, Dennis Halley)
- .. Hidden Discrimination & GIS (Ben Marsh)
- .. Health Care Atlas (Amy Wolaver)
- .. John Smith Trail Initiative (Katie Faull, Alf Siewers)
- .. Lewisburg Genealogy (Marj Kastner)
- .. Mapping Tolstoy (Slava Yastremski)
- .. Marcellus Shale Initiative (Carl Kirby)
- .. Sudan Field Atlas Guide to Mammals (DeeAnn Reeder)
- .. Susquehanna Sustainability Indicators Project (Peter Wilshusen)
- .. Bat White-Nose Syndrome Arousal Study (DeeAnn Reeder)
- .. Frac Water Transport (Kevin Gilmore)
- .. Four Roads to Vietnamese History (David Del Testa)

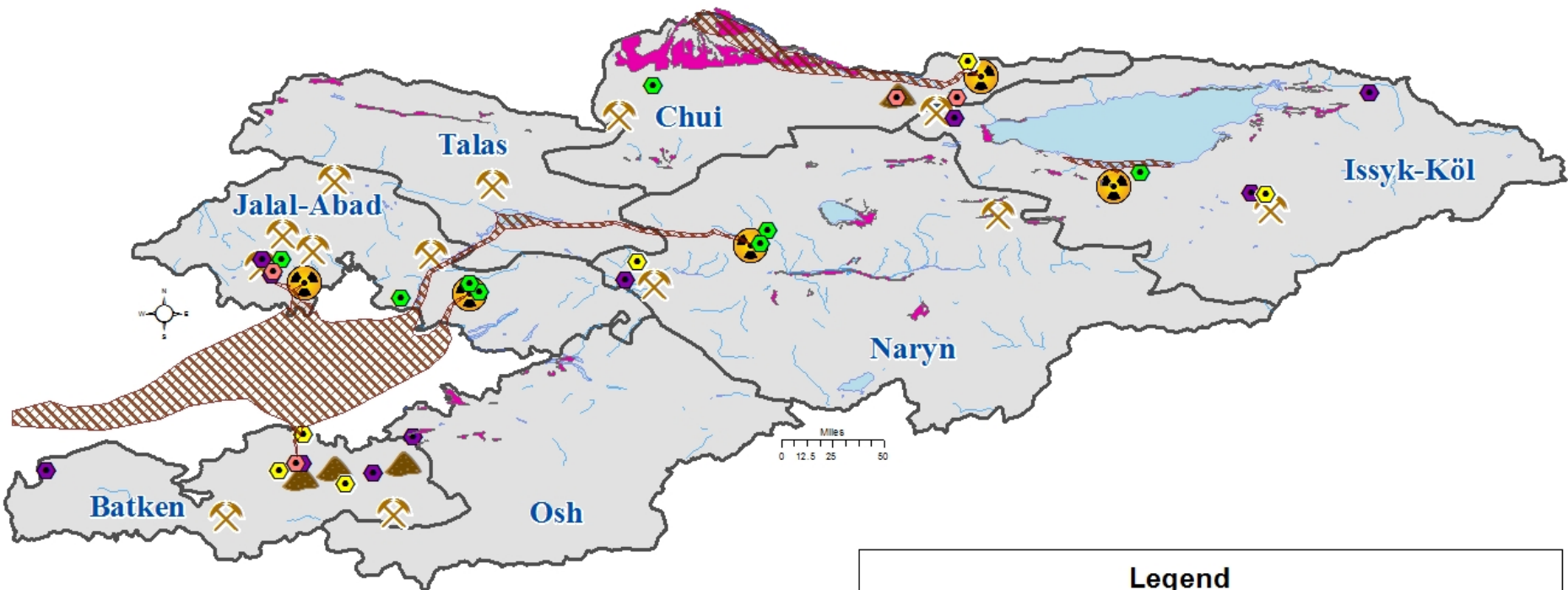
Four Roads to Vietnamese History

Locations of Nghe-Tinh Soviets and Protests (1930-31) shown in relation to NgheAn and HaTinh communes. Communes are clipped to areas where slope is 2% or less and are classified by type of rice cultivation.



Environmental Activism in Kyrgyzstan

Environmental Hazards & Resources



From Wooden, Amanda E. "Another Way of Saying Enough: Environmental Concern and Population Mobilization in Kyrgyzstan." Working Paper. March 2012. Bucknell University. Basemap from DIVA-GIS. Data adapted from: Gosgeolagenstvo 2005 and Fluid et al., 2004 in Hutton, David, ed. 2007. Kyrgyzstan: Environment and Natural Resources for Sustainable Development. United Nations Development Programme in the Kyrgyz Republic, Bishkek; and The small atlas of emergencies forecasting and risk reduction on the territory of the Kyrgyz Republic. 2006. The Government of the Kyrgyz Republic, the Asian Disaster Reduction Center & the Ministry of Emergency Situations, Bishkek. Map created by Amanda Wooden & Janine Glathar

Legend

- | | | | |
|---------------------------------------------------------------------------------------|----------------------------|---------------------------------------------------------------------------------------|----------------------------|
|  | Dumps |  | Gold |
|  | Tailing Dumps |  | Slag Heaps |
|  | Toxic Waste Tailings |  | Possible Pollution Zones |
|  | Radioactive Tailing Dumps |  | Areas of Possible Flooding |
|  | Radioactive Waste Tailings | | |

Stories of the Susquehanna

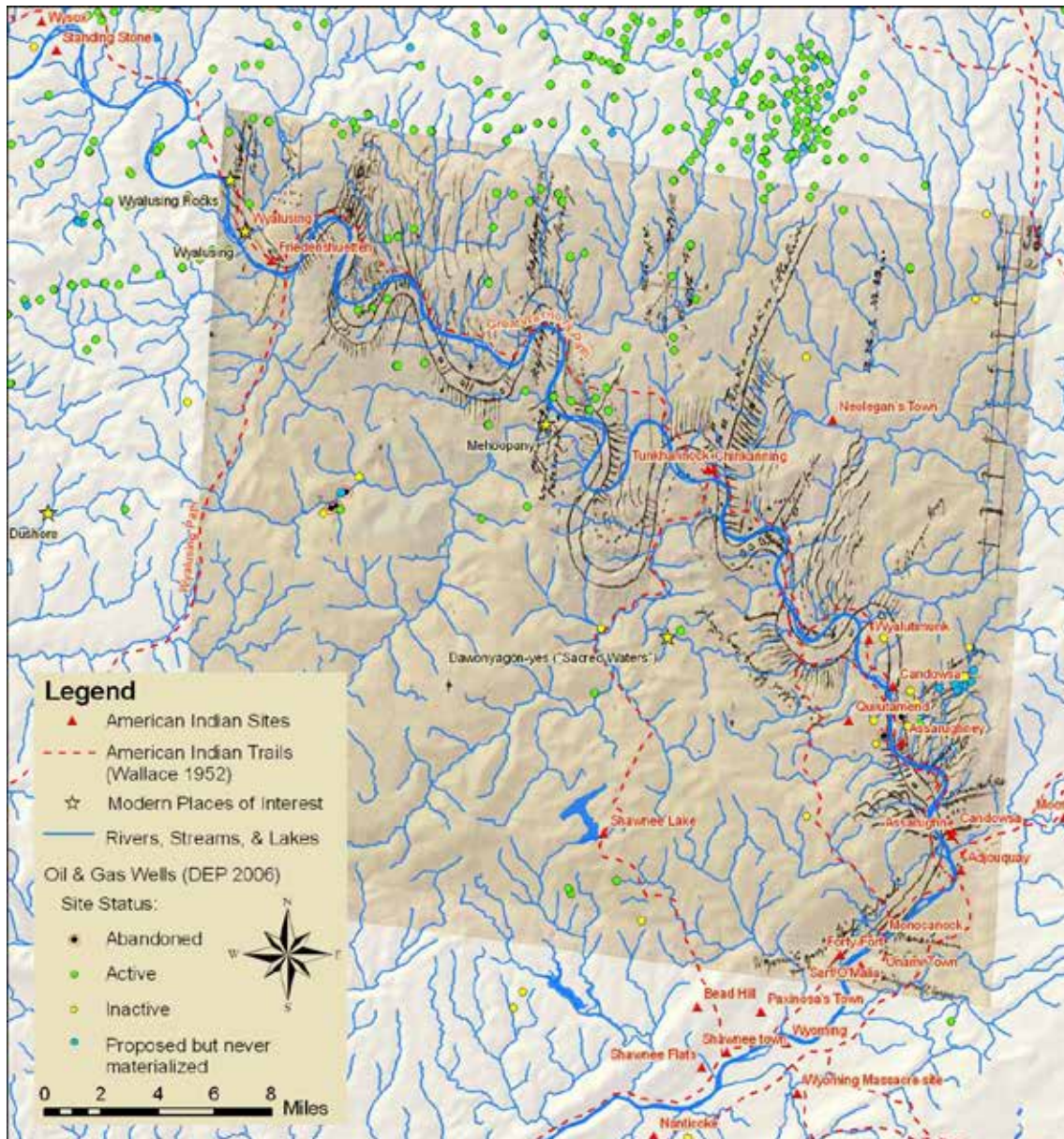
Incorporating Modern GIS Data

Layers:

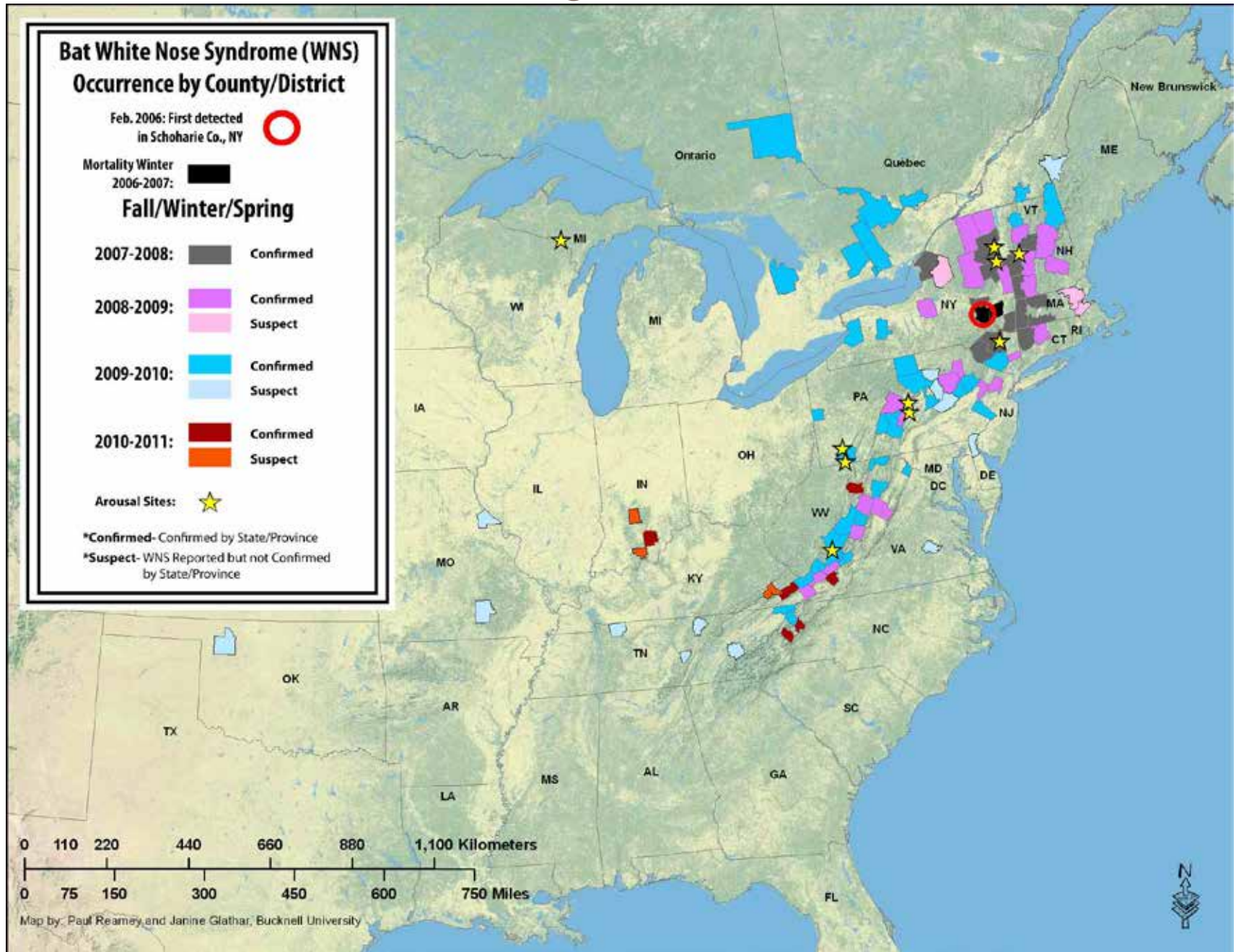
✓ American Indian sites, Wallace's Indian Paths, and streams

✓ Georeferenced German North Branch map

✓ Oil and Gas Wells (DEP GIS dataset, 2006) categorized by site status—Active, Inactive, Abandoned, Proposed but Never Materialized



Bat White-Nose Syndrome Arousal Study



Where we're at now



- Sample of student & faculty pathways

Getting GIS into... the humanities

- Bethany Dunn, English/History '13
 - ✧ FOUN099, 'Blue Highways' (foundation seminar)
 - ✧ GIS/video project for Environmental Res College
 - ✧ GEOG204, Applied GIS
 - ✧ HUMN272, Nature & Human Enlightenment
 - ✧ Mellon-funded student research assistant collaborating with Prof. Katie Faull and Prof. Alf Siewers on research for 'Stories of the Susquehanna' project
 - ✧ HUMN290, Susquehanna Stories (IP course)
 - ✧ HIST000, Historical GIS (methods course)
 - ✧ Senior honors thesis?

Getting GIS into...the social sciences

- Jorge Vargas, Environmental Studies/Geography '12
 - ✧ Susquehanna Summer Writer's Institute
 - ✧ Library & IT-funded GIS student assistant
 - ✧ ENST302, Environmental Research (methods course)
 - ✧ ENST255, Environmental Justice
 - ✧ GEOL230, Environmental GIS

Getting GIS into... science & engineering

• Rebekah Hupp, Civil Engineering '13

- ✧ Engineering 101, Engineering Graphics
- ✧ Geology 230, Environmental GIS
- ✧ Engineering 320, Water Resources Engineering
- ✧ Engineering 421, Hydrology
- ✧ Engineering 490, Senior Design
- ✧ McKenna-funded research assistant collaborating with Prof. Kevin Gilmore and I on using GIS to analyze potential air pollution impacts from frac water transport to Marcellus Shale wells in NE PA.

Embedded GIS: Amanda Wooden

.. Year 1

- ✧ GIS guest lecture in ENST 202 (GIS & Research Design)
- ✧ Collaborated on mapping survey data on env. activism in Kyrgyzstan
 - n Student research assistants supervised by GIS specialist
- ✧ Presentation for faculty colloquium series

.. Year 2

- ✧ GIS guest lecture in ENST 202 (GIS & Research Design)
 - n Added GIS lab: 'Human/Landscape Interaction: Marcellus Shale'
- ✧ Collaborated on mapping survey data on env. activism in Kyrgyzstan
 - n Added spatial analysis of survey data
 - n Jointly-supervised student research assistants
- ✧ GIS guest lecture in ENST 255 (GIS & Environmental Justice)
- ✧ Susquehanna Valley Summer Writer's Institute
 - n Web-based mapping application
- ✧ Introductory GIS workshop
- ✧ Multiple presentations & publications
 - n Tenure year

.. Year 3

- ✧ All of the above
- ✧ Collaborated on mapping survey data on env. activism in Kyrgyzstan
 - n Moving towards faculty member as primary GIS research supervisor
- ✧ Spatial Statistics workshop
- ✧ Multiple presentations & publications

What's next

- I will get 2 pilot web map apps out this summer even if it kills me!
 - ✧ Teaching pilot - New Orleans IP course
 - ✧ Research pilot - 'Stories of the Susquehanna'
- Tighter integration with course materials
 - ✧ Meeting specific learning objectives
 - ✧ Pre/post evaluation and student evaluations
- Figuring out how to get
 - ✧ Assistant for me
 - ✧ Web developer for academic projects
 - ✧ Course releases for faculty

GIS Specialist Contact Info

Janine Glathar, GIS Specialist
Library & Information Technology
Bertrand Library, 107A
Bucknell University
Lewisburg, PA 17837

(570) 577-1990

janine.glathar@bucknell.edu

Lat 40.954052° Long -76.882604°

GIS Blog: <http://giszone.blogs.bucknell.edu>