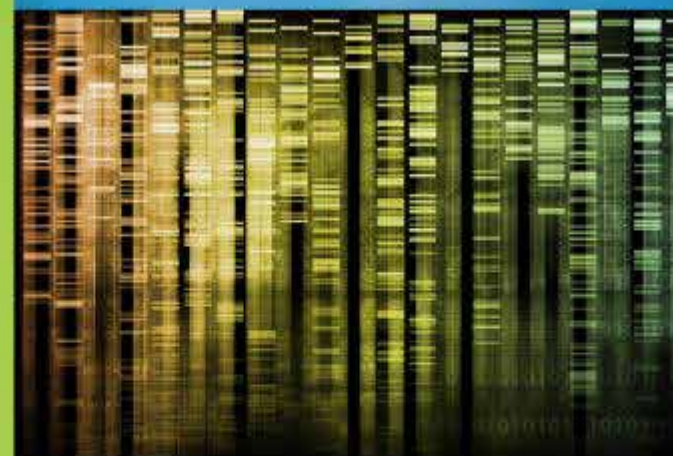


Jane Garb, MS

Epidemiology/Biostatistics Core
Dept. of Academic Affairs



Baystate  Health

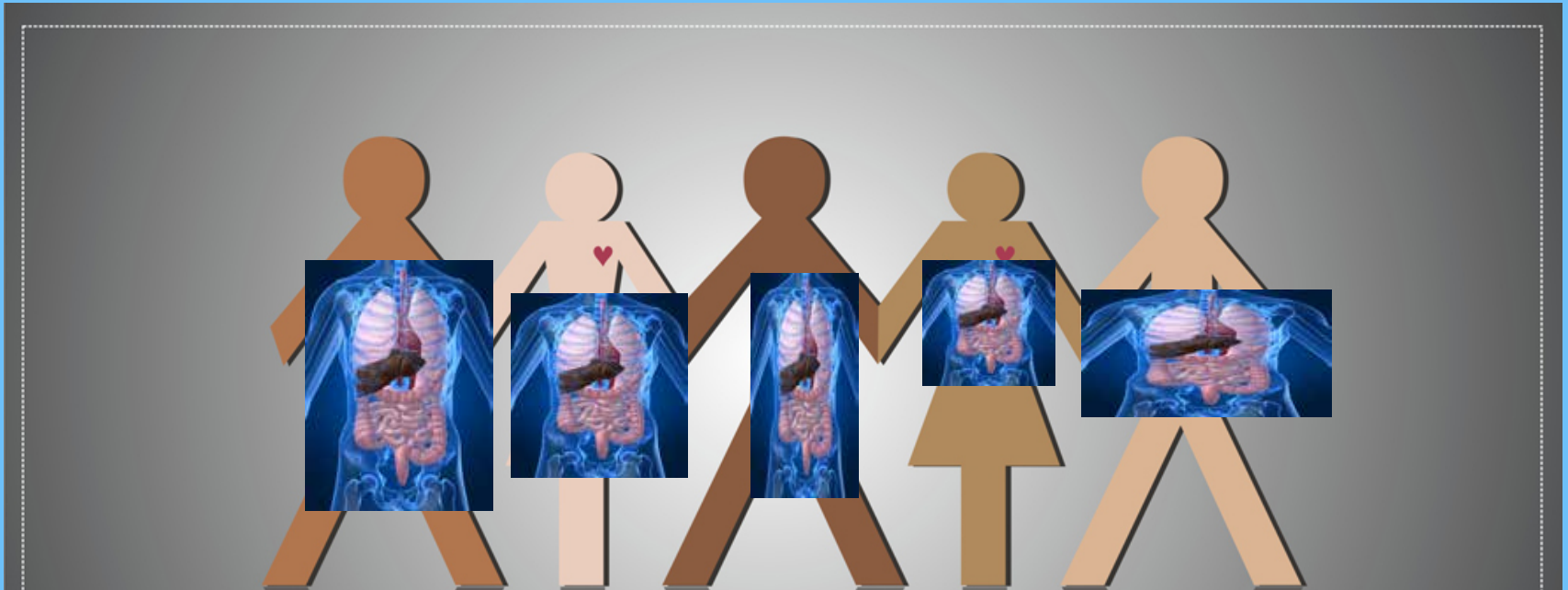
Springfield, MA 01199

Why a geographic perspective of the human body?

- q **Spatial Contiguity** is important
- q Different body “systems” have a **spatial organization**
- q **Disease spreads** to neighboring regions or along networks
- q Location affects ability to detect and treat

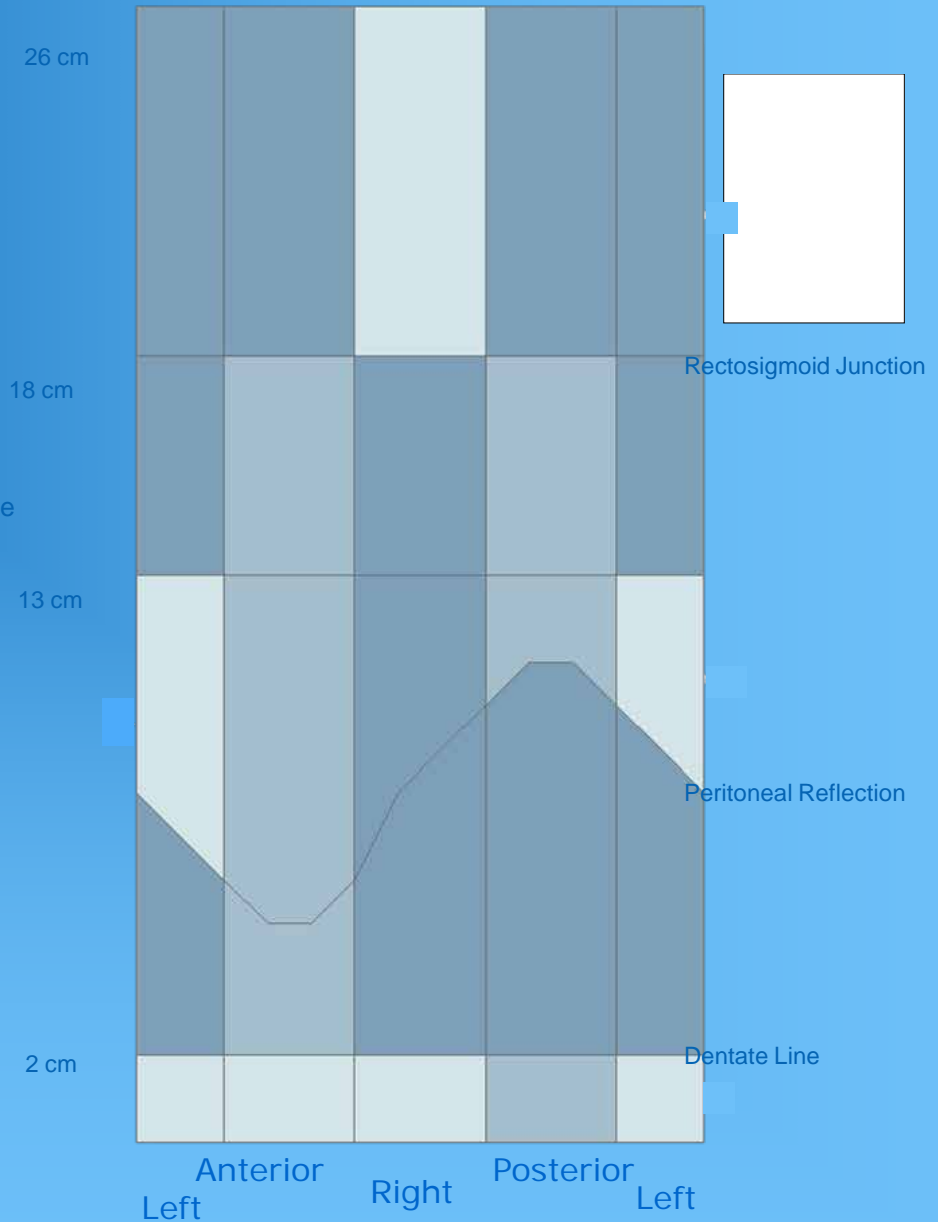
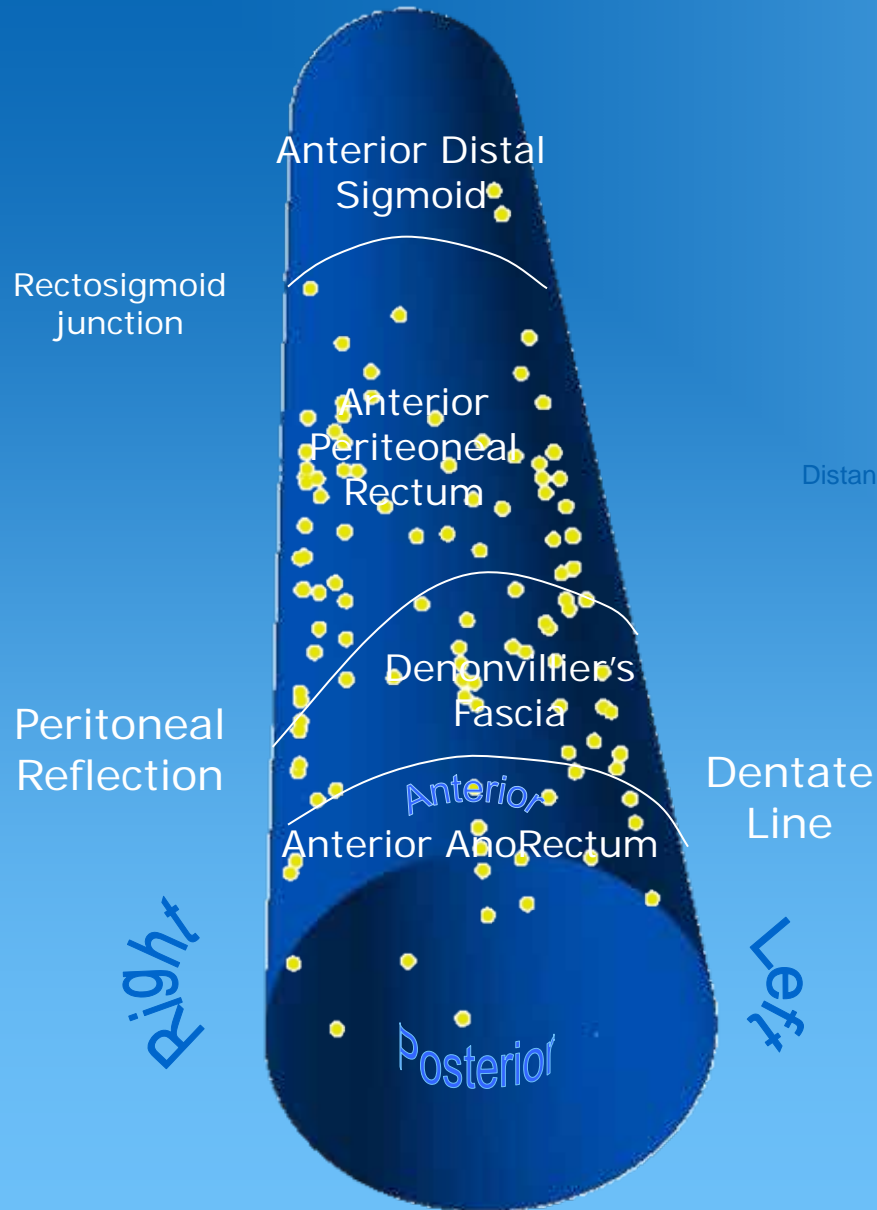


...but everyone's "base map"
is different



...can we find common reference
points?

Anatomic Regions & Lesion of the Colon



Mapping the Gene

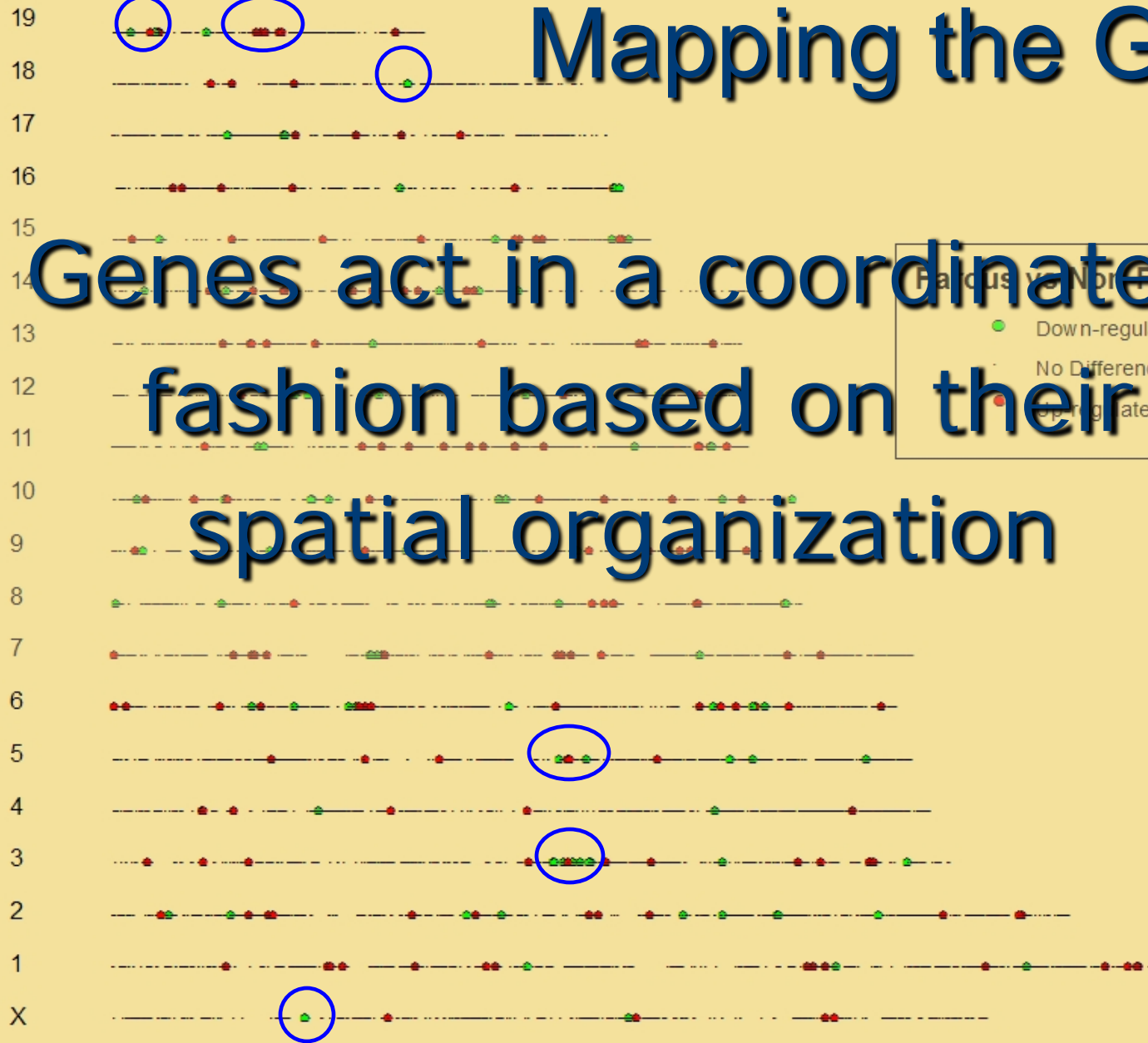


The starting and ending locations of human genes are known

chromosome

Mapping the Gene

Genes act in a coordinated fashion based on their spatial organization



No scale is too small

No scale is too small

No scale is too small

No scale is too small

No scale is too small

No scale is too small