




Spring NEARC 2012

# LIGHTNING LUNCH





# Lightning Fast, Informative & Fun!

- § 5 minute talks
  - § Quick dose of knowledge
  - § Lightning Karaoke
  - § Questions/Answers after the session
- 

# Lightning Lunch Agenda

§ Introduction

§ Perspectives on  
Public Sector Data  
Sharing

ú Michael Olkin, Town of  
Amherst, MA

§ Social Media and GIS

ú Sam Berg, Esri

- I'm Building a GIS Boat. Will It Float?
  - Adam Kurowski,  
Town of Arlington,  
MA
- GIS at Any Scale
  - Jane Garb,  
Baystate Health

# Lightning Lunch Agenda

## § Lightning Karaoke

• *1 brave volunteer*

## § National Hydrologic Dataset Stewardship in Massachusetts

- *Brian Brodeur, MA DEP*

- Enabling Geospatial Data Access via Education: A MAGIC Approach
  - *Michael Howser, Uconn MAGIC*
- Using the “Early, Often, and Just the Right Amount” Approach to Integrating GIS into the Liberal Arts Curriculum
  - *Janine Glathar, Bucknell University*

# What's Lightning Karaoke?

- § 1 hearty volunteer, ready for the unknown
- § 1 presentation of relatively random slides
  - ú 20 slides x 15 seconds = 5 minutes of fun

Buckle Up, it's Lightning Time!



# Perspectives on Public Sector Data Sharing

Michael Olkin

GIS Administrator

Town of Amherst, MA

[olkinm@amherstma.gov](mailto:olkinm@amherstma.gov)

[www.amherstma.gov/maps](http://www.amherstma.gov/maps)

# Who's Data is Public Data?

- § In Massachusetts, it's everyone's data.
  - ú Public Employees/Officials are merely the custodians
  - ú Public Data is publicly funded



# Who Wants Public Data?

§ Almost everyone at one time or another

- ú Professionals
- ú Volunteers
- ú Students
- ú Corporations

# What's required when it's requested?

§ Depends upon the state

§ MA Public Records Law has few exclusions

ú \* "Every record made or received by a government entity is presumed to be a public record, unless it is subject to an exemption."

# What's required when it's requested?

§ Depends upon the state

§ MA Public Records Law has few exclusions

- ú \* "Every record made or received by a government entity is presumed to be a public record, unless it is subject to an exemption."
- ú \* "The custodian has the burden of claiming an exemption and showing why it applies."

# We Need to Cough Up the Data

- § Time is money
- § Does cost recovery make up for lost staff time?

# Modes of Data Sharing

## Manual

§ Place your order & we'll fill it


§ Fees based upon

- ú Staff Time (rate of lowest paid staff member capable of filling the order)
- ú Materials



# Modes of Data Sharing

Automated

- § Download hosted files
  - § Extract via a web service
  - § Process via an API
- 

# Data Sharing Experimentation in Amherst

## § Data Request Form (2005-2011)

- ú Request Emailed to staff
- ú Staff contact requestor with cost estimate
- ú Order manually filled
- ú Cost based upon time/materials

3) The Requester will have no claims to data updates.

4) The Requester shall indemnify and hold harmless the Town and its officers, employees and agents from and against all losses, claims, demands, actions payments, costs, suits, liabilities, including attorney's fees, expenses and damages (direct or consequential) whether or not caused by the negligence of the Town, its officers, employees, or agents, which are incurred by or recovered against the City for any reason whatsoever arising out of or relating to this Agreement, or the data, or to any use to which the Requester might put the data.

The Requester acknowledges that he/she has read this agreement, understands it and agrees to be bound by its terms and conditions.\*

Yes  No

Requestor Name\*

Company

E-Mail\*

Daytime Phone\*

Data Extent\*  Townwide  Specific Area If for a specific area, please describe

Vector Data Categories\*

Sanitary Sewer System Layers  Survey Control Point Layer  ESRI ArcGIS File Geodatabase  CAD Drawing Exchange Format (DXF)

Drainage System Layers  Other (please describe below)  ESRI Shapefile  AutoCAD 2000 DWG

Water Distribution System Layers

Raster (Image) Data

2004 Amherst Color Orthophoto  Other (please describe below)  TIFF  MrSID Compressed

1999 Amherst Color Orthophoto  JPEG2000 Compressed  PNG

ESRI GRID

Preferred Delivery Method

Zip File Download  CD / DVD / Thumb Drive

Additional instructions or questions

\* indicates required fields.

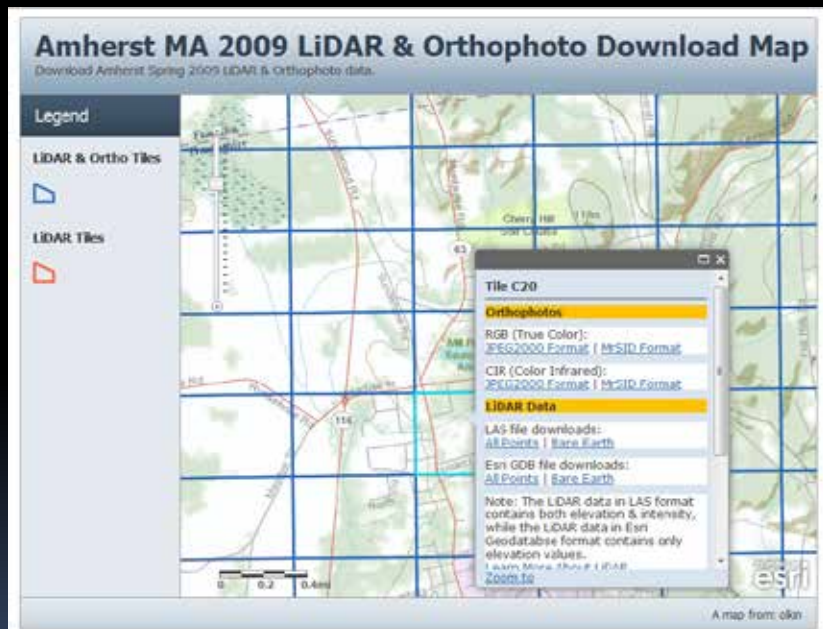
Submit Submit and Print Reset Cancel

# Data Sharing Experimentation in Amherst

Free Download of Hosted Files  
(2008-Present in various formats)

ú By tile via map apps

ú via ArcGIS.com



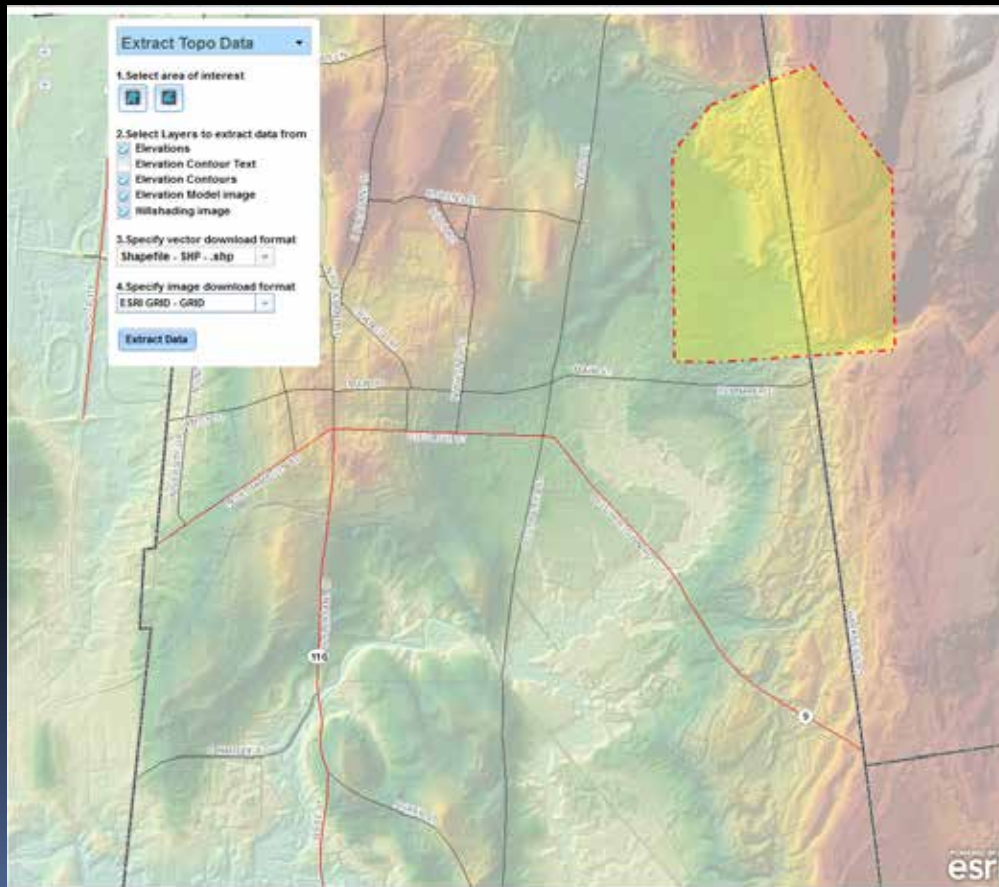
ArcGIS.com Map + Application Template





# Data Sharing Experimentation in Amherst

## § Free Data Extraction (2010-Present)



ArcGIS API for  
JavaScript "Clip &  
Ship" code sample

# Data Sharing Experimentation in Amherst

§ One Stop (free) Shopping: it's all on one page

AMHERST MASSACHUSETTS

Search: amherstma.gov

LIVING VISITING BUSINESS GOVERNMENT BOARDS & COMMITTEES DEPARTMENTS ONLINE SERVICES

You are here: Home > Departments > Information Technology > Geographic Information Systems > GIS Resources > Get Amherst GIS Data

### Get Amherst GIS Data

GIS Data is a valuable public resource and we take pride in ensuring that it is available for the public good. Get copies of Amherst's GIS Data right here!

**Download & Extraction Apps**

#### Townwide Data

Download Amherst GIS data including:

- [Amherst MA 2009 Basemap Data](#)
- [Amherst MA Parcel Data](#)
- [Amherst MA Protected Land and Trails Data](#)
- [Amherst MA Topo Points Data](#)
- [Amherst MA Watershed 1994 Basemap Data](#)
- [Amherst MA Zoning Map Data](#)

[LIDAR & Ortho Download](#)

[Topo Data Extraction](#)

[Twitter](#) (12)

Are you looking for something that is not listed here? Submit a [GIS Data Request](#) and we'll be glad to work with you to get everything that you need.

Adapted from the ArcGIS.com "Local Government Maps and Apps Gallery" code sample.

# Results & Lessons

- § Data Request forms are usually confusing
- § Freely available data = less loss of staff time
- § One format is not always enough
  - ú We like geodatabases, but always have shapefiles as an option
- § Simplicity is key
  - ú “Gallery” portal implementation immediately reduced data request form submissions / calls

# Perspectives on Public Sector Data Sharing

Michael Olkin

GIS Administrator

Town of Amherst, MA

[olkinm@amherstma.gov](mailto:olkinm@amherstma.gov)

[www.amherstma.gov/maps](http://www.amherstma.gov/maps)