

# Update on Community Maps Program

NEARC Spring Meeting, May 17, 2011

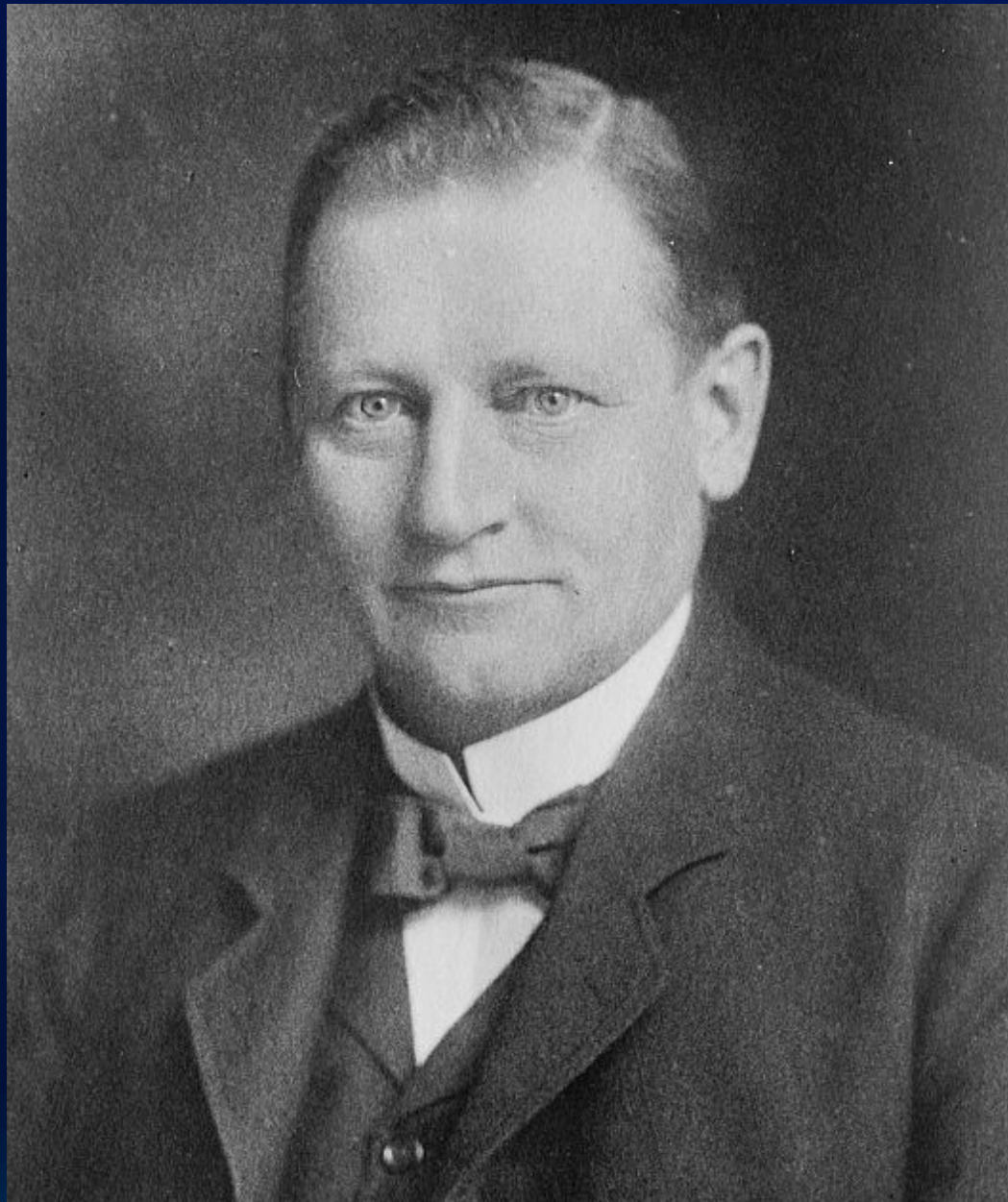
Don Cooke, Community Maps Evangelist, Esri

NEARC



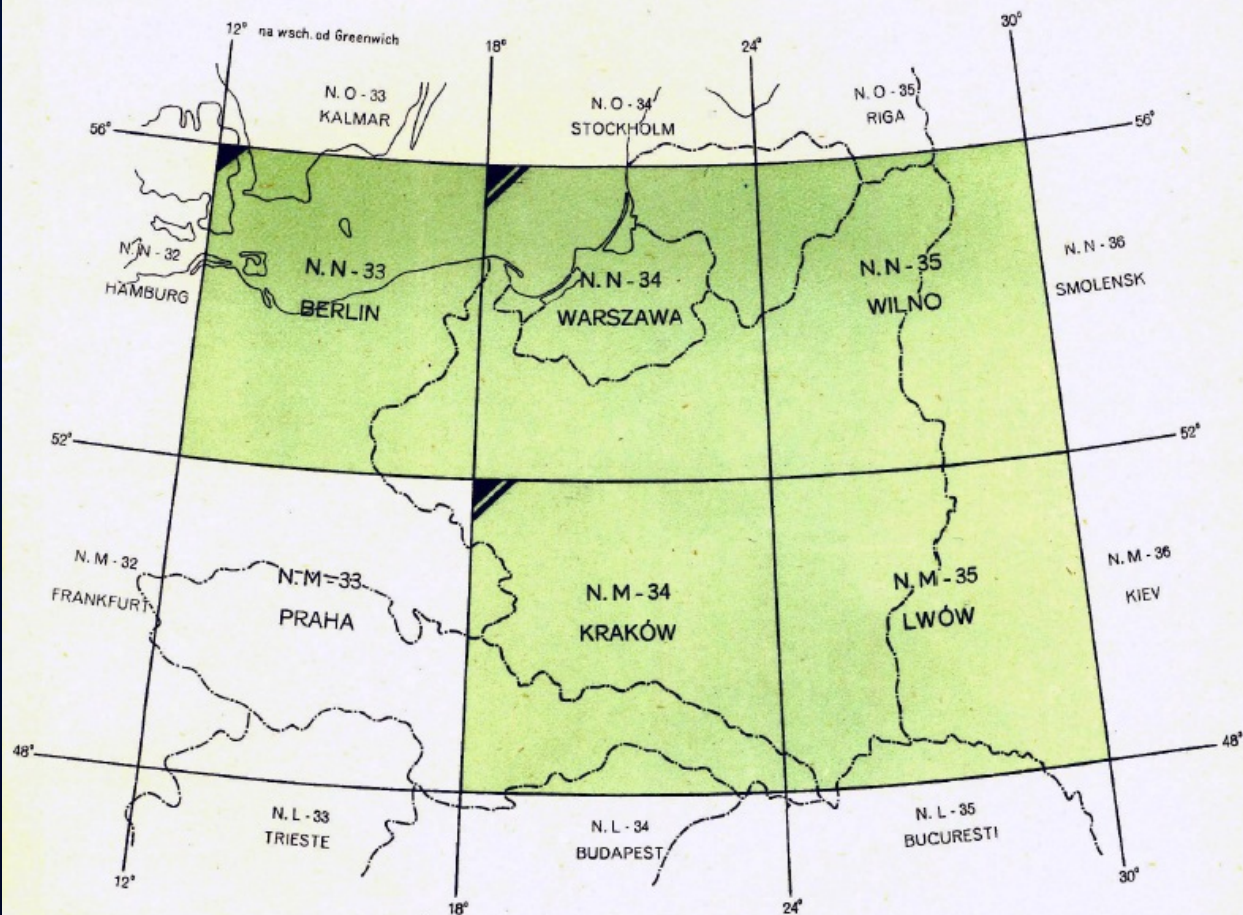
Northeast Arc Users Group





**Albrecht Penck**

CARTE INTERNATIONALE DU MONDE AU 1 000 000-e  
et  
CARTE NORMALE AÉRONAUTIQUE INTERNATIONALE  
Feuilles publiées par l'Institut Géographique Militaire à Varsovie



Carte du Monde

Carte aéronautique



Feuilles publiées



Feuilles publiées



Feuilles en préparation

NORTH AMERICA 11000,000

## BOSTON

Map 10.5. NK 19  
NORTH K 19 A

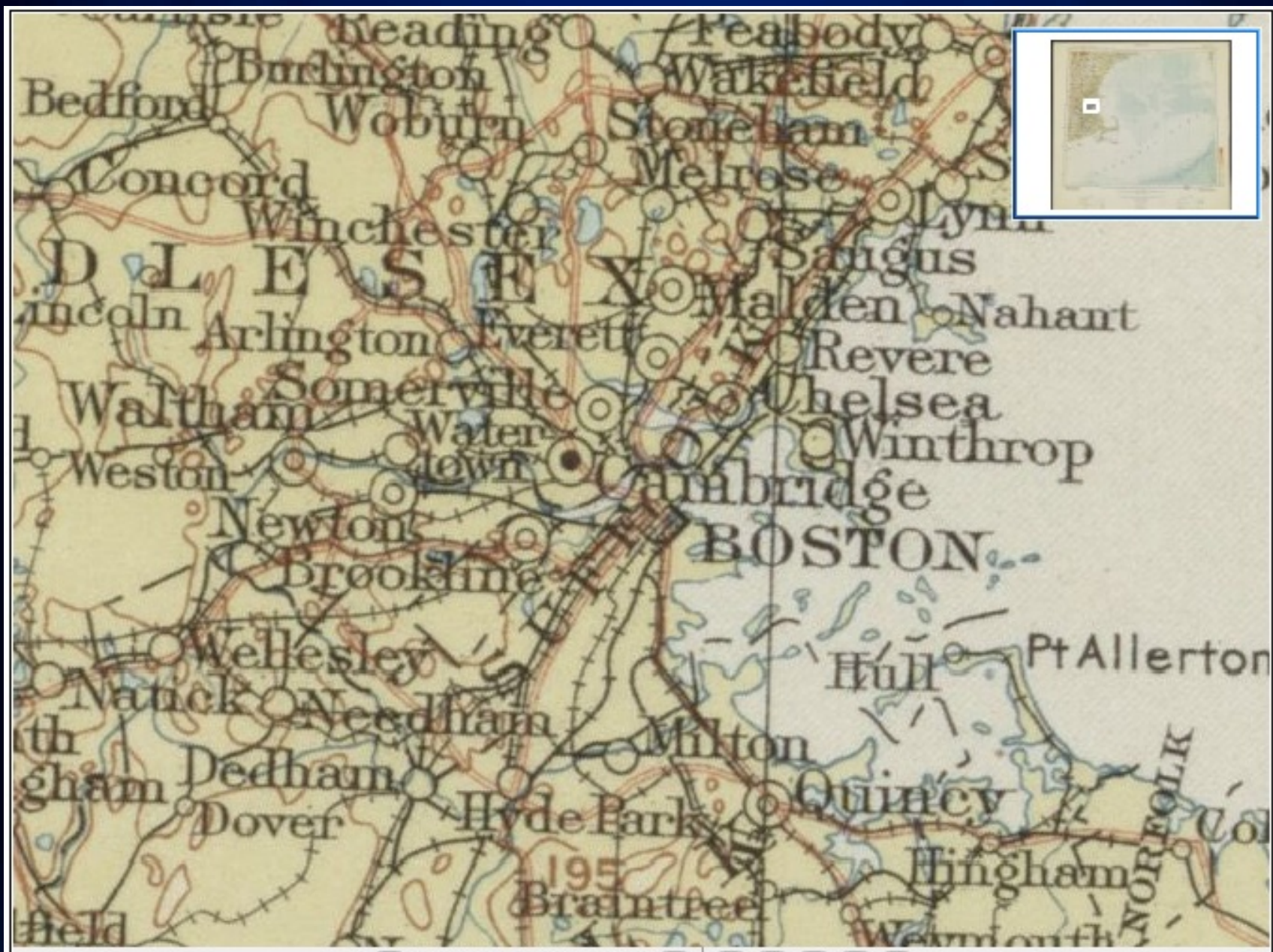


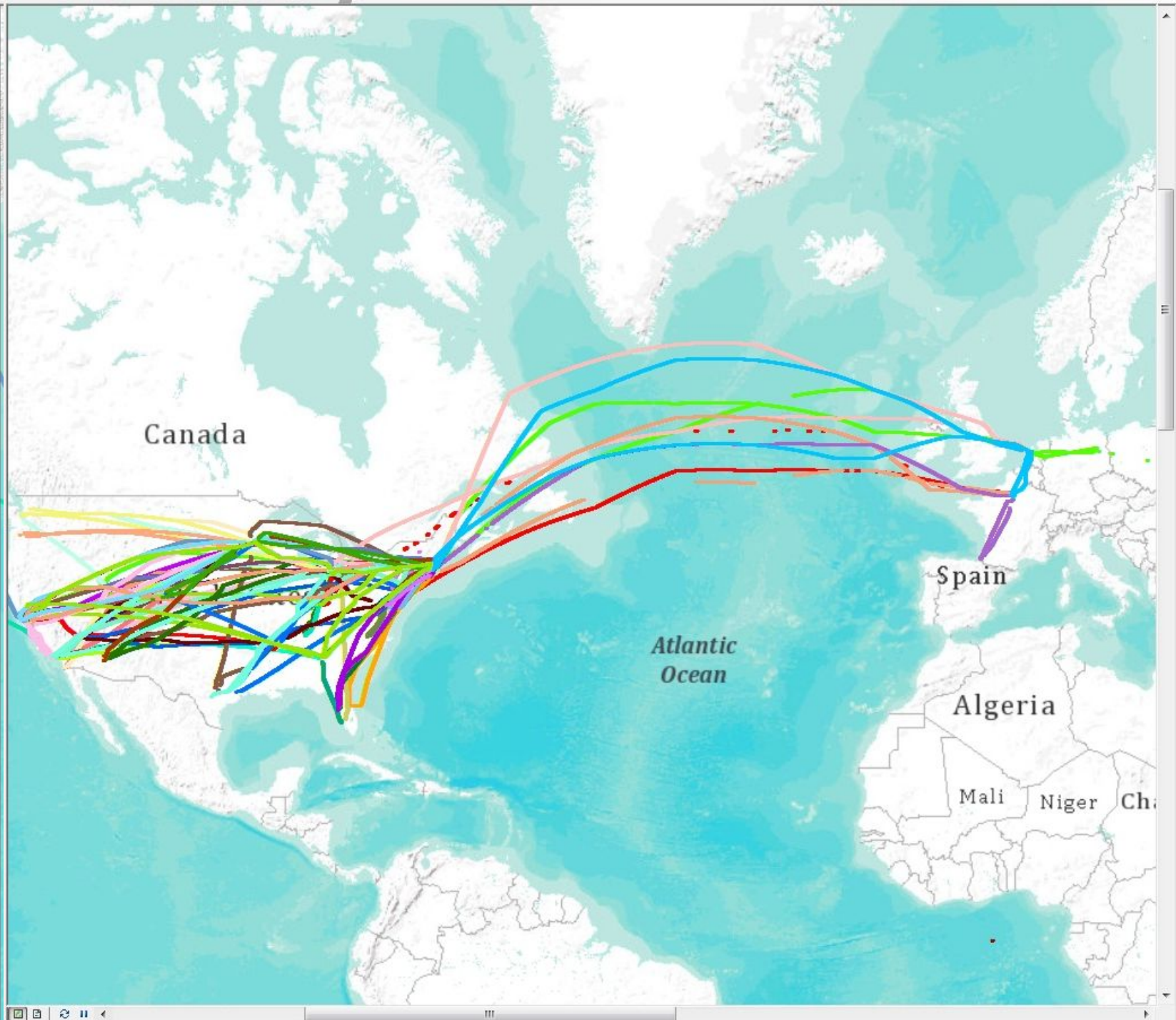
*Compiled, improved, and published by  
United States Geological Survey  
George Otis Smith, Director  
Washington, February, 1917*

Scale 1:1000000

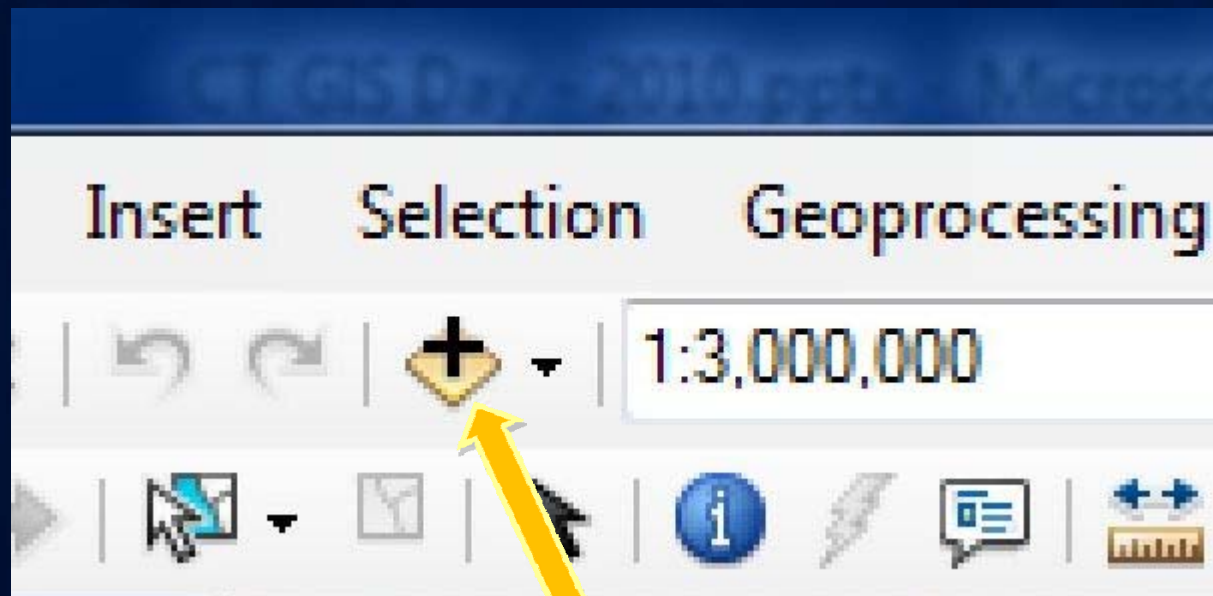
Kilometres 10 5 0 10 20 30 40 50 60 70 80 90 100 Kilometres

1 Millimeter = 1 Kilometer

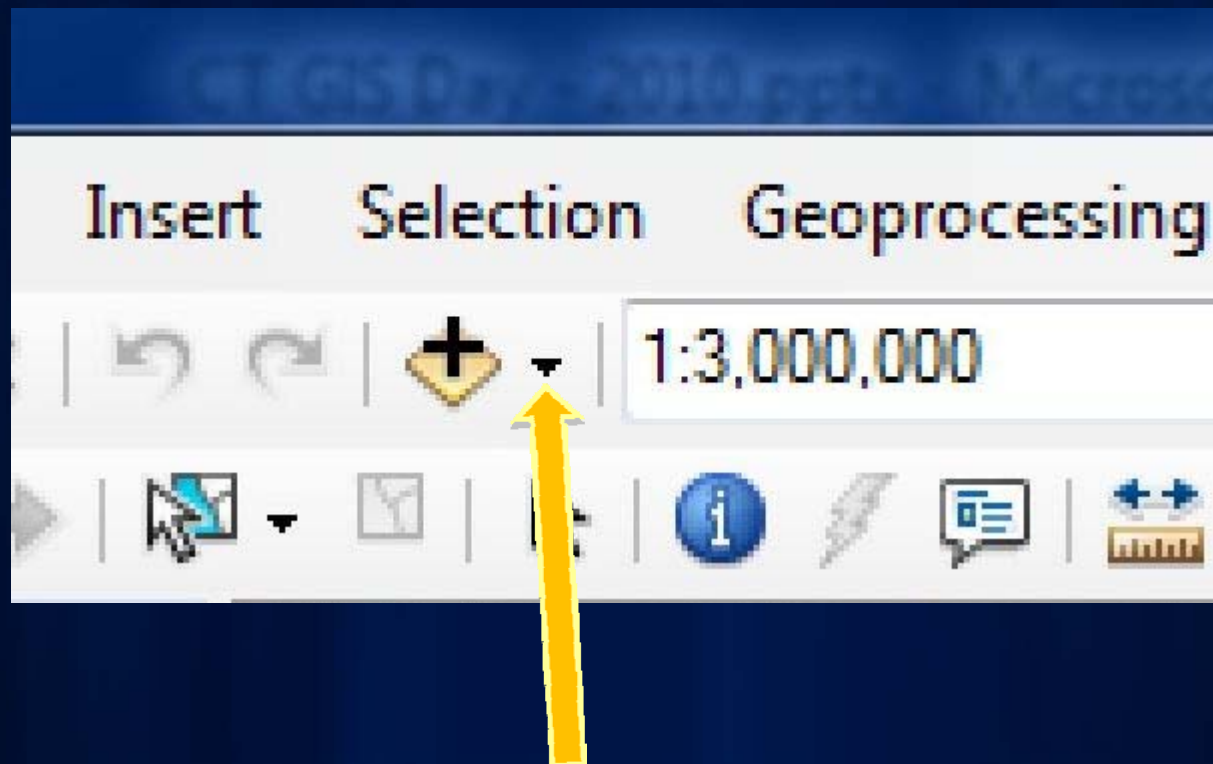




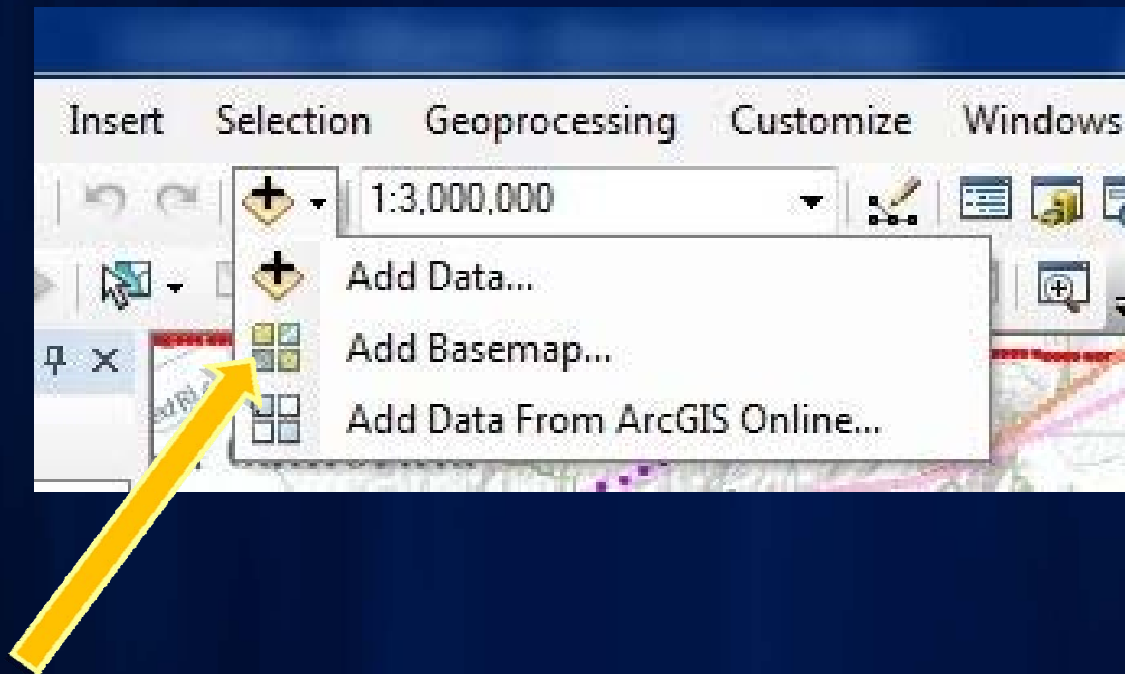
## Add Data



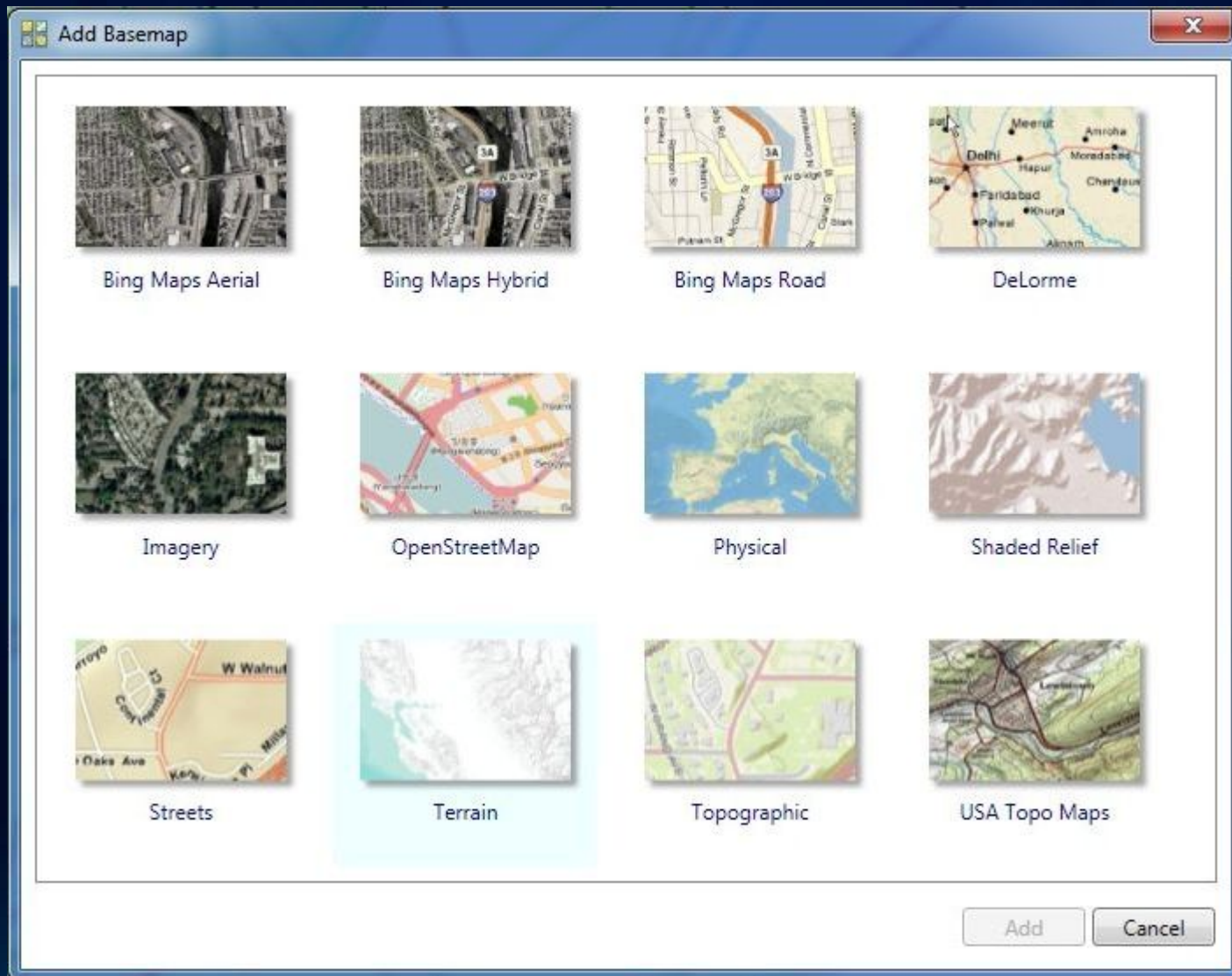
## Add Data

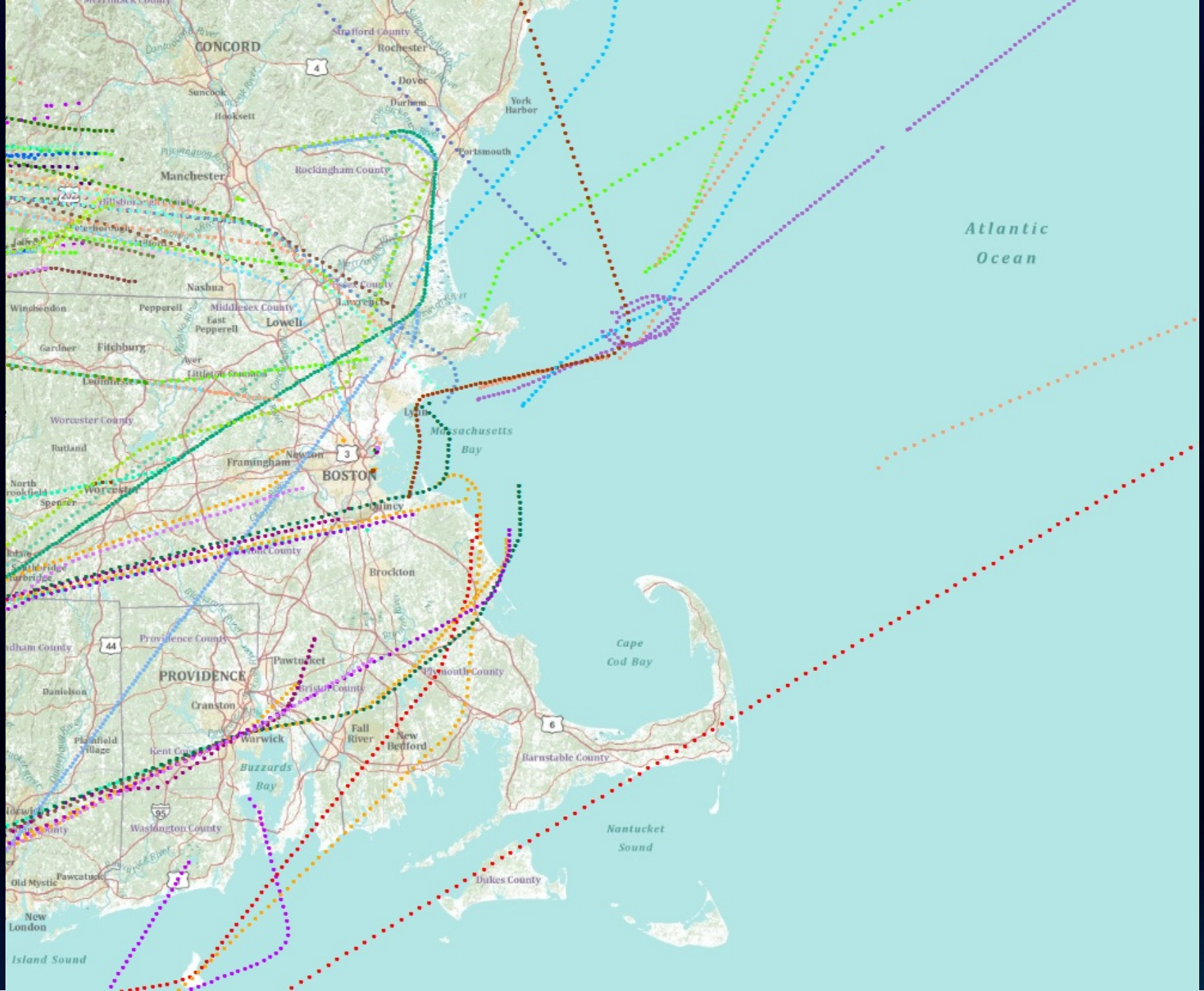


# Add Basemap

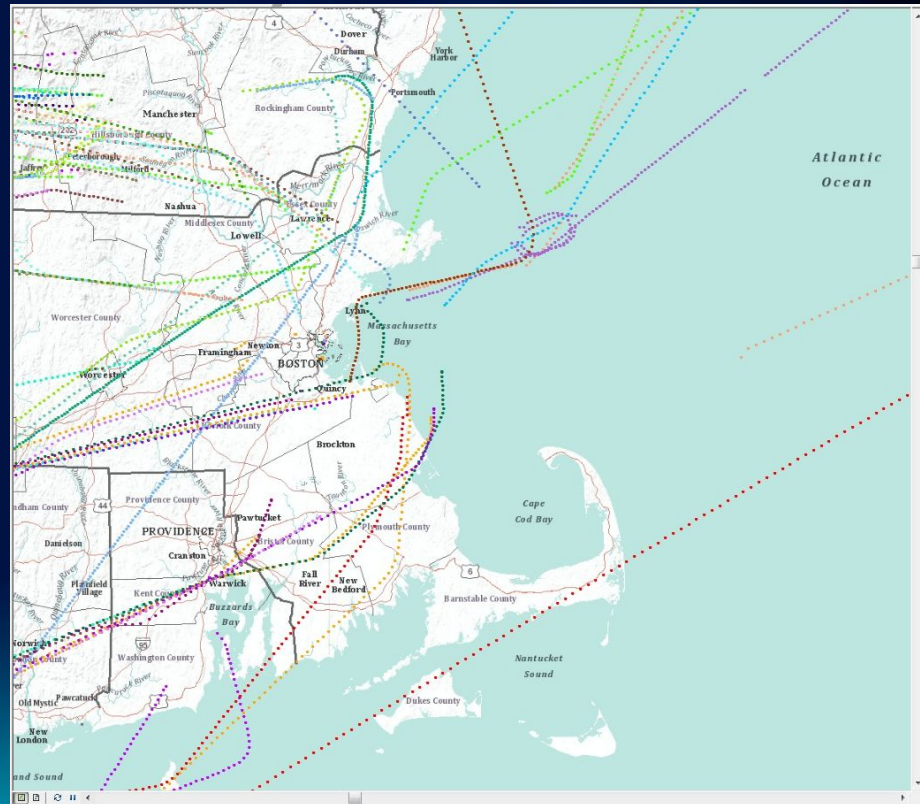


# Add Basemap









# **“Maps and Apps”**

- **Community Basemaps is part of a bigger picture**
- **Four Generations of GIS:**
  - **The Fortran Era: 1965 – 1980**
  - **The Command-Line Era: 1980-2000**
  - **The Desktop Era: 2000 - ???**
  - **“Maps and Apps”: 2010 - ???**
- **The vision:**
  - **Use a “best-practices” information model**
  - **Use configurable application templates**
  - **Use common, authoritative basemaps**
- **Make government open, transparent and efficient**
- **Think beyond jurisdictional boundaries**
  - **(Wildfires, West Nile Virus, Terrorists don’t care about boundaries)**



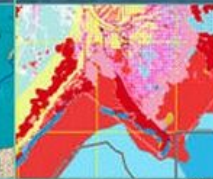
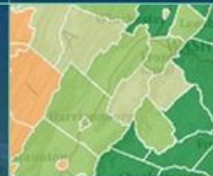
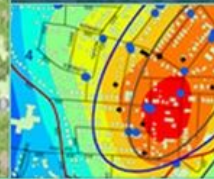
ArcGIS

GALLERY

MAP

GROUPS

MY CONTENT



# ArcGIS Online

Maps and Apps for Everyone

## View the Gallery

See maps and apps from people and organizations worldwide.

## View Groups

Work together with the people who share your interest.

## Make a Map

Create a map you can view on the web, desktop and mobile devices.

## Start ArcGIS Explorer Online

Use a rich application for working with ArcGIS online maps.

## Learn More

ArcGIS is an online system for using geographic information everywhere.



GROUPS

MY CONTENT



[Search All Content](#)  
[Search for Maps](#)  
[Search for Apps](#)  
[Search for Tools](#)  


---

[Search for Groups](#)



## 70 groups found that match 'local'

[Relevance](#) Title Owner Date



[Details](#)

### ArcGIS for Local Government

Welcome to the Local Government Group on ArcGIS.com. It provides useful maps, apps and best practices that will help you successfully implement GIS in your organization.

created by ArcGISTeamLocalGov on May 25, 2010



[Details](#)

### ArcGIS for Infrastructure

Welcome to the Infrastructure Group on ArcGIS.com. It provides useful maps, apps and best practices that will help you successfully implement GIS in your water utility and/or public works agency.

created by ArcGISTeamLocalGov on June 22, 2010



# Public Safety How to use the Public Safety Special Event Planning



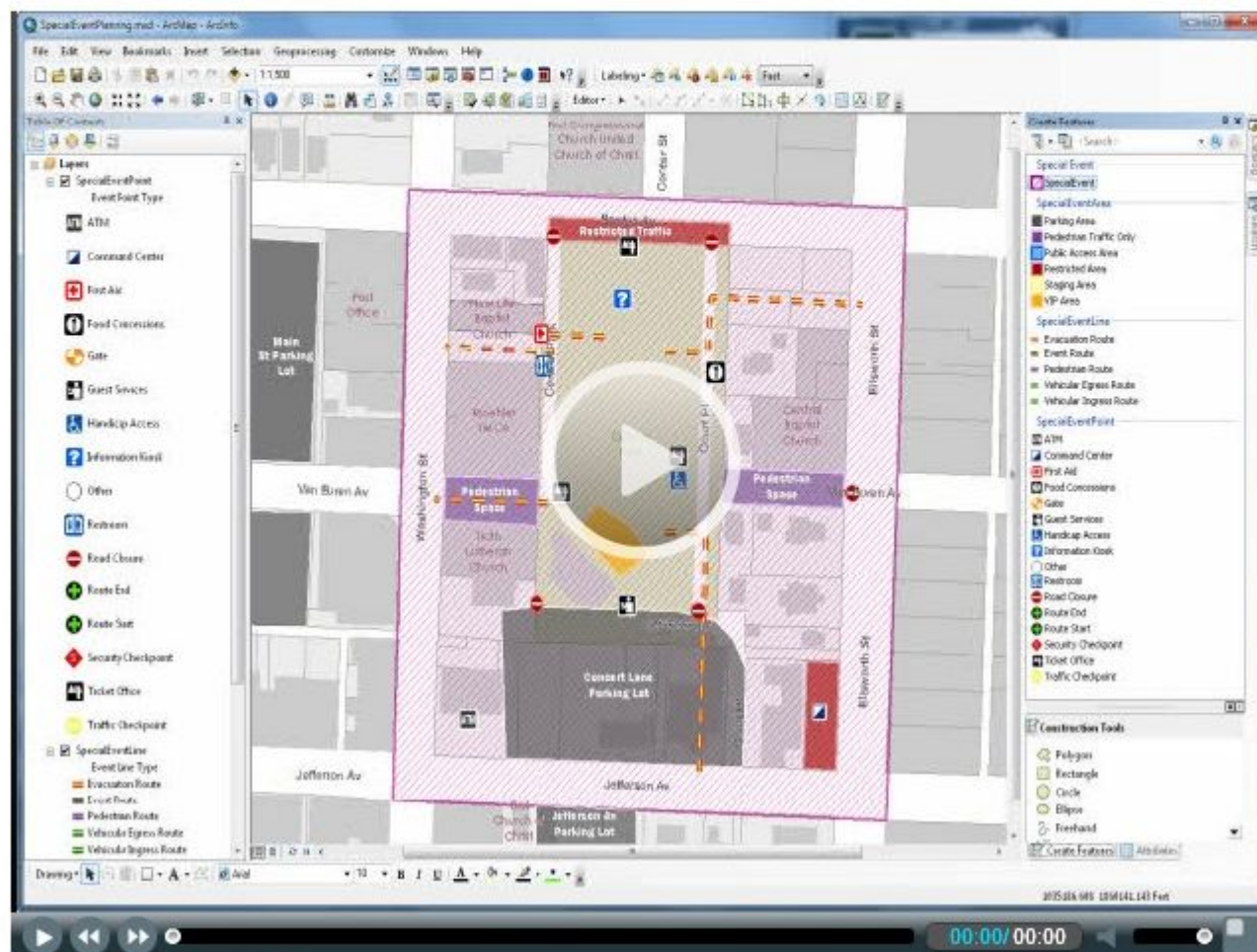
Open ▼

## Description

The Public Safety Special Event Planning map is a tool for managing special event safety or emergency maps.

This template includes

- A multi-scale map
- An Add-in for ArcGIS
- The Local Government



By ArcGIS Team LocalGov

# Community Base Maps

- Beautiful cartography designed as background context for data
- 20 zoom level image cache, from global to neighborhood
- Hosted free in the cloud by Esri
- Maintained by authoritative sources: city and county GIS agencies
- Authorities' vector data remains property of agency
- Authorities' vector data can't be downloaded
- Integral part of ArcGIS 10
- Can be viewed on Desktop, Web ([arcgis.com](http://arcgis.com)) and iPhone / Android / Windows 7

# Community Maps Benefits

- **Make GIS operations more efficient: quick visualizations**
- **Free Application templates in Apps Gallery**
- **Representation of surrounding area – out to global**
- **Using GIS to improve efficiency of government: online information for citizens versus phone response**
- **Using GIS to make government more open and transparent**
- **(If jurisdiction sells data): advertisement for GIS data**
- **Showcase for GIS Department's work**

# NEARC Participation

Participant Name	Status
Allegheny County	In Production
Allentown	In Production
Amherst	Published
Atlantic County	In Production
Baltimore City	In Production
Bangor	In Production
Belmont	In Production
Boston	Published
Brookline	In Production
Bucks County	In Production
California University of PA	In Discussion
Cambridge	Published
Chittenden County Regional Planning Commission	In Production
Dedham	In Production
Delaware State	In Discussion
Dover	Published
Harvard University	Published
Lexington	In Production
Manchester (NH)	In Discussion
Mashpee	In Production
MIT (MA Institute of Technology) University	In Production
Monmouth County	Published
Monroe County (NY)	In Production
New Castle County	In Production
New Jersey State	In Production

Participant Name	Status
New York City	Published
Newington	Registered
Newton	In Production
North Eastern CT Council of Gov't (NECCOG)	In Production
Ogdensburg (NY)	In Production
Orange County (NY)	In Discussion
Philadelphia	Published
Pittsburgh	In Production
Portland (ME)	In Discussion
Raynham, Town of	In Discussion
South Windsor	In Production
Sussex County	Published
Towson University	In Discussion
Trenton	In Discussion
UMass Lowell	In Production
UMass Medical Center	In Production
Union County (PA)	In Production
University of Massachusetts Amherst	In Production
University of New Hampshire	In Production
Waltham	Published
Waterbury	In Discussion
Westchester County	In Production
Worcester	Published
York	Published

Registered	1
In Discussion	9
In Production	27
Published	12

# What's Coming?

- **“These are the good old days”**
- **Expand coverage and detail**
- **Update existing coverage**
- **Make it easier for users to participate**
- **Add new community maps**
- **Add new capabilities to support more uses and Apps**



esri