



Welcome

Spring NEArc 2010

Lightning Round Presentations

Lightning or...

The screenshot shows a web browser window with three tabs: (7) Twitter / Home, pecha kucha - Flickr: Sear..., and W Pecha Kucha - Wikipedia,.... The address bar shows the URL http://en.wikipedia.org/wiki/Pecha_kucha. The browser's bookmark bar contains folders for bit.ly sidebar, Projects, GIS, Programming, Personal, and Data. The Wikipedia page features the globe logo and the text "WIKIPEDIA The Free Encyclopedia". Navigation links include "article", "discussion", "edit this page", and "history". A banner at the top of the article reads "Wikipedia's getting a new look. Learn more." The article title is "Pecha Kucha". Below the title, it states "From Wikipedia, the free encyclopedia (Redirected from Pecha kucha)". The main text defines Pecha Kucha (ペチャクチャ?), usually pronounced as "pe-chak-cha", as an onomatopoeic Japanese word for the sound of conversation. It mentions that Pecha Kucha Night was devised in 2003 by Astrid Klein and Mark Dytham of Tokyo's Klein-Dytham Architecture (KDa). The text describes the format: presentations consist of around a dozen presentations, each presenter having 20 slides, each shown for 20 seconds. Each presenter has just 6 minutes 40 seconds to explain their ideas before the next presenter takes the stage. It notes that the format keeps presentations concise, fast-paced and entertaining. The article concludes by stating that in 2004 PKN began running in a few cities in Europe, and has since become a worldwide phenomenon, now running in more than 260 cities in almost every corner of the globe. The left sidebar contains navigation links (Main page, Contents, Featured content, Current events, Random article), a search box, and interaction links (About Wikipedia, Community portal, Recent changes). The bottom of the browser shows a download bar with a file named "538448710_0d08342c....jpg" and a "Show all downloads..." button.

(7) Twitter / Home × pecha kucha - Flickr: Sear... × W Pecha Kucha - Wikipedia,....

← → ↻ 🏠 ☆ http://en.wikipedia.org/wiki/Pecha_kucha ▶ 📄 🔧

bit.ly sidebar Projects GIS Programming Personal Data Other bookmarks

Try Beta Log in / create account

article discussion edit this page history

Wikipedia's getting a new look. [Learn more.](#) [Hide]

Pecha Kucha

From Wikipedia, the free encyclopedia
(Redirected from [Pecha kucha](#))

Pecha Kucha (ペチャクチャ?), usually pronounced in three syllables as "pe-chak-cha", is the **onomatopoeic Japanese** word for the sound of conversation. The equivalent **English** term is "chit-chat".

Pecha Kucha Night was devised in **2003** by Astrid Klein and Mark Dytham of Tokyo's Klein-Dytham Architecture (KDa), as a way to attract people to Super Deluxe, their experimental event space in [Roppongi](#).^[1] Pecha Kucha Night events consist of around a dozen presentations, each presenter having 20 slides, each shown for 20 seconds. Each presenter has just 6 minutes 40 seconds to explain their ideas before the next presenter takes the stage. Conceived as a venue through which young designers could meet, show their work, exchange ideas, and network, the format keeps presentations concise, fast-paced and entertaining.

In 2004 PKN began running in a few cities in Europe, and has since become a worldwide phenomenon, now running in more than 260 cities in almost every corner of the globe.^{[2][3]}

Contents [hide]

1 Format

538448710_0d08342c....jpg Show all downloads... ✕



Getting Social with Geo

Guido Stein

GIS Analyst

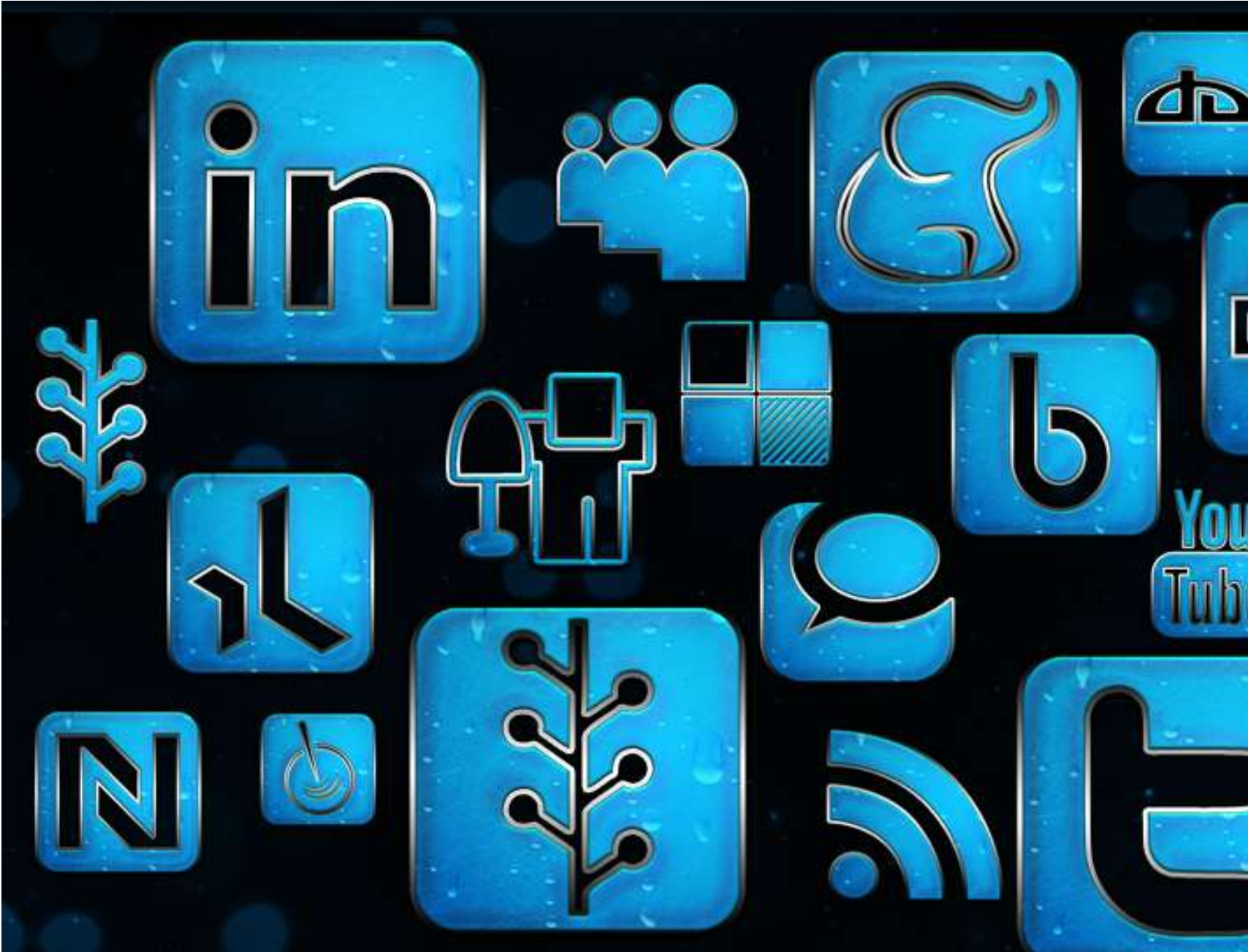
Applied Geographics Inc.

Sticking to my knitting



Thanks to Todd Huffman
<http://www.flickr.com/photos/oddwick/>

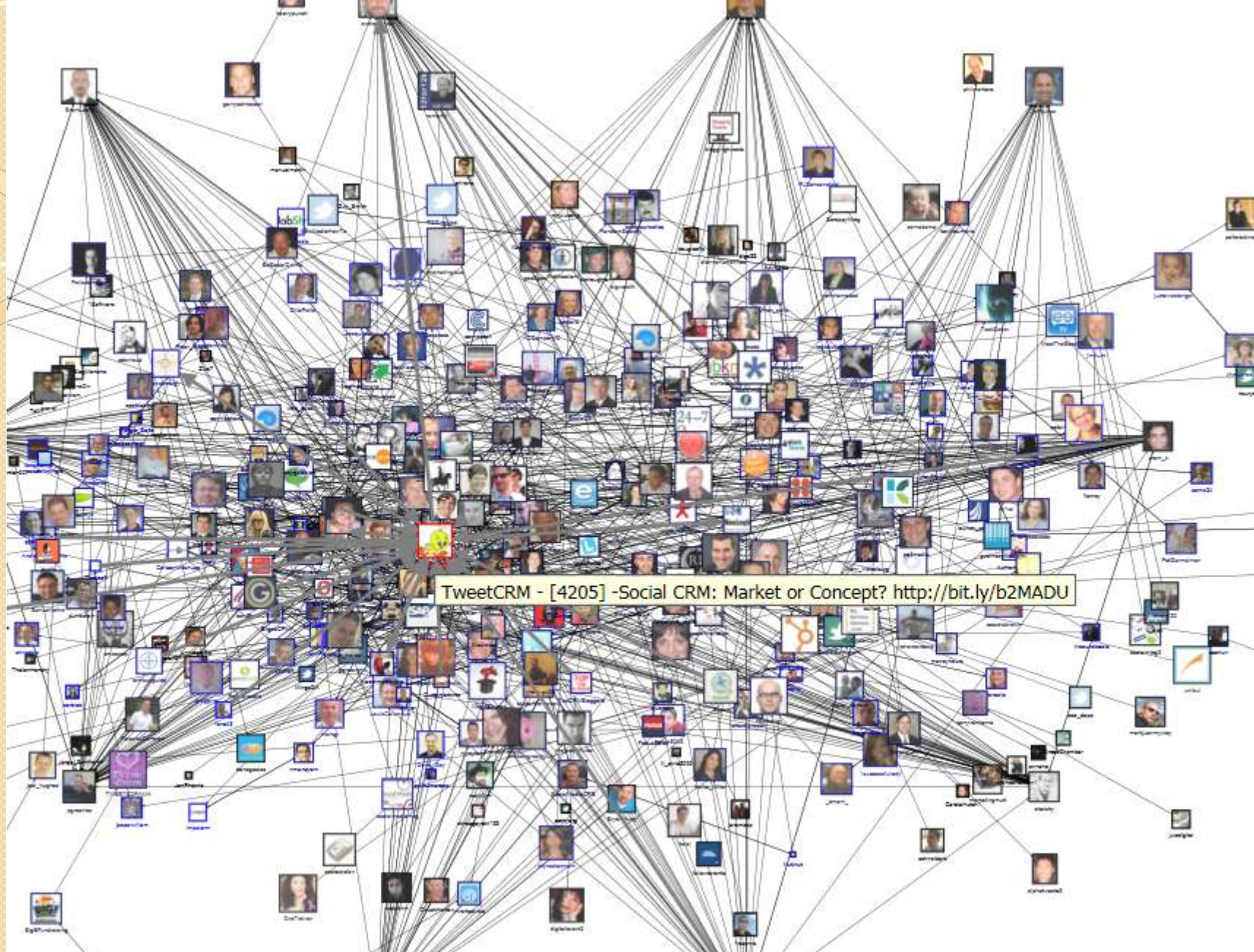
Social Media



Thanks to Web Treats

<http://www.flickr.com/photos/webtreatsetc>

Social Networks



Thanks to Marc Smith
http://www.flickr.com/photos/marc_smith

Analogous Networks



Thanks to RonAlmog
<http://www.flickr.com/photos/ronalmog/>

Blog and Podcasts



Thanks to BenBen
<http://www.flickr.com/photos/nebneb/>

Geo Blogs and Podcasts

- www.spatiallyadjusted.com
- apb.directionsmag.com
- blogs.esri.com/Support/blogs/mappingcenter
- www.directionsmag.com/podcasts
- www.esri.com/news/podcasts
- veryspatial.com

Twitter



Thanks to Cornell University Library
<http://www.flickr.com/photos/cornelluniversitylibrary/>

Twitter Conversations

- Talking about @mentions
- @mention directly
- #hashtag
- D Direct Message

@cageyjames

@ESRI

@autocad2010

@FMEDoctors

Karen (CAD friend at ESRI)

Facebook



Thanks to Max Klingensmith
<http://www.flickr.com/photos/mklingo/>

Facebook | AGIO - Mozilla Firefox

File Edit View History Bookmarks Tools Help

http://www.facebook.com/?ref=home#!/pages/Little-Rock-AR/AGIO/102216438438

us virgin lieutenant governor

bit.ly SideBar Most Visited Latest Headlines Google Wikipedia Wiktionary Bubba & Craig's Footb... PGATOUR.com - The ...

Welcome to eBay (29) Twitter / H... Facebook ... About Google W... screensnap2_24... Takeaways Fro... WMS, WFS and ... Office of the Ta...

facebook Search Home Profile Account

AGIO

Wall Info Photos Discussions Boxes Events >>

Write something...

Attach: Share

AGIO + Others AGIO Just Others



Suggest to Friends

Subscribe via SMS

Arkansas Geographic Information Office
"Putting Arkansas on the Map!"

Information

Location:
1 Capitol Mall, Suite 2B 900
Little Rock, AR, 72201

Phone:
(501) 682-2767

Mon - Fri:
8:00 am - 4:30 pm

8 Friends Like This

6 of 8 Friends See All



Danielle McBride Ayan



Damian Coleman



Deb Asbury



AGIO

April 30 & May 1, 2010 Storms

Link to ftp (ftp://ftp.geostor.arkansas.gov/Event/20100430_Weather) Little Rock National Weather Service continues to survey damage from this weekends storms. They will provide tornado track information as soon as they can. Currently the following information is available on the ftp site....

11 hours ago · Comment · Like · Share



AGIO

April 30, 2010 Strong Storms

Strong storms passed through the state on April 30, 2010. These storms produced several sever thunderstorm tracks and possible tornadoes. The AGIO has set up an ftp site to provide a single place to gather and distribute maps, and GIS data related to this event...

11 hours ago · Comment · Like · Share



AGIO

City Boundary and Road Centerline Updates

City Boundaries- provided by the Arkansas Highway & Transportation Department <http://www.geostor.arkansas.gov/G6/Home.html?id=1e4ac0a30bf74bbfc90af81180b36265> Arkansas Road Centerline file- Madison, Union, and Woodruff provided by each county Clip, format,...

11 hours ago · Comment · Like · Share



AGIO

We recently received feedback about how GeoStor is becoming a valuable tool in the banking industry... Read more: <http://wp.me/pASNN-2U>

GeoStor Fills the Gaps Where Other Programs Fall Short « Arkansas Geographic Information Office's Ne

wp.me

Create an Ad

Don't forget Mother's Day



Save \$15 on a 1-800-FLOWERS.COM® purchase of \$49.99* or more with Tropicana Juicy Rewards, and send an online flower gift for free now.

Like

IQMatics Euro Furniture



High-end designer European furniture for luxury house or condo. We offer modern sofa beds, bedrooms, sectionals, dining sets.

Like

ClassOf1980.org





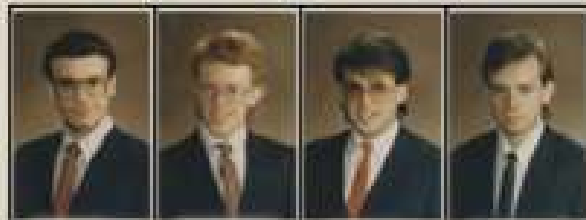
T. Dinh J. Lynn



J. Dillon Treasurer S. Brown V.P. of Membership R. Koehler Executive VP. J. Frazzini President C. Esther V.P. of Management J. Locke V.P. of Education J. Hollis Social Chair



J. Rushak G. P.



M. Yellin G. Smith A. Temkin W. Worley

Sigma Tau Gamma

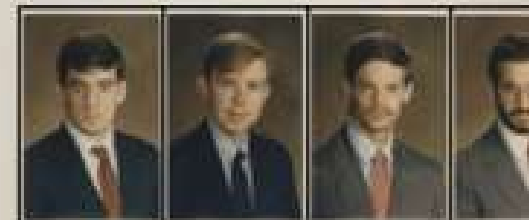
DELTA XI

1988

1989



Carnegie Mellon University



P. Shore J. Bewick J. McKula J. R.



J. Irwin J. Heyel M. Shea S. Tomko R. Atkins



R. Schwartz M. Daninirsch R. Cochran P. Strofollino A. M.



J. Goldberg D. Whelan R. Boyd D. Kastin H. Chien C. Wilson Sparky Mascot



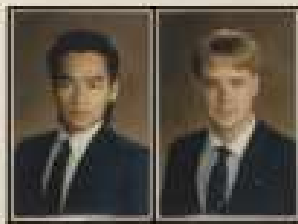
A. Nemitoff J. Ng S. Ward R. Chopra M. D.

Little Sisters



Linked In

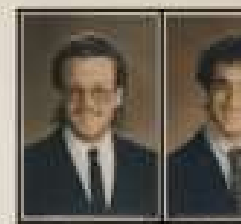
Thanks to djwhelan
<http://www.flickr.com/photos/djwhelan/>



T. Dinh J. Lynn



J. Dillon S. Brown R. Koehler J. Frazzini C. Esther J. Locke J. Hollis
Treasurer V.P. of Executive President V.P. of V.P. of Social Chair



J. Rusnak G. P.

- GIS
- GIS & Geospatial Technology Leadership Group (GTLG)
- GPS/GIS Jobs
- School and Business alumni groups
 - Clark university
 - Industrial Economics



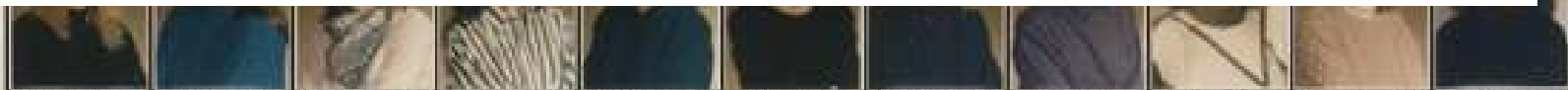
M.



J.



J. G.



C. Moss L. Schmidt C. Woyciesjes L. Boice T. Ythier L. Tamburro K. Schulz M. Huff S. Lambert K. Mayr A. Krebs



Stats for Guido S. from the last month

month

- + [Tweet these stats!](#) (and allow others to see this page)
- + [Tweet these stats!](#) (and keep this page private)

DAYS CHECKED IN

10

NUMBER OF CHECKINS

14

AVG CHECKINS WHEN OUT

1.4

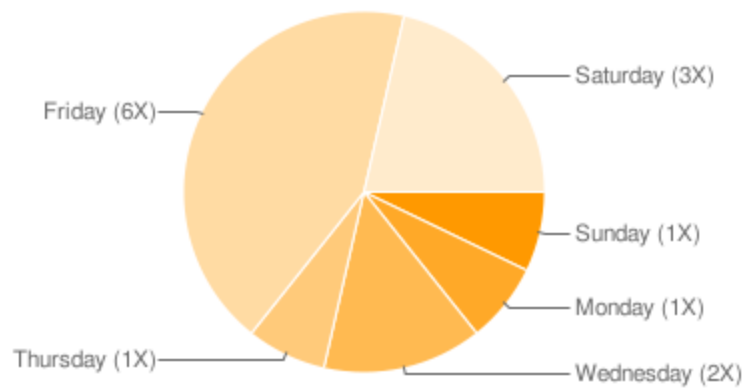
% OF CHECKINS AT NEW PLACES

64%

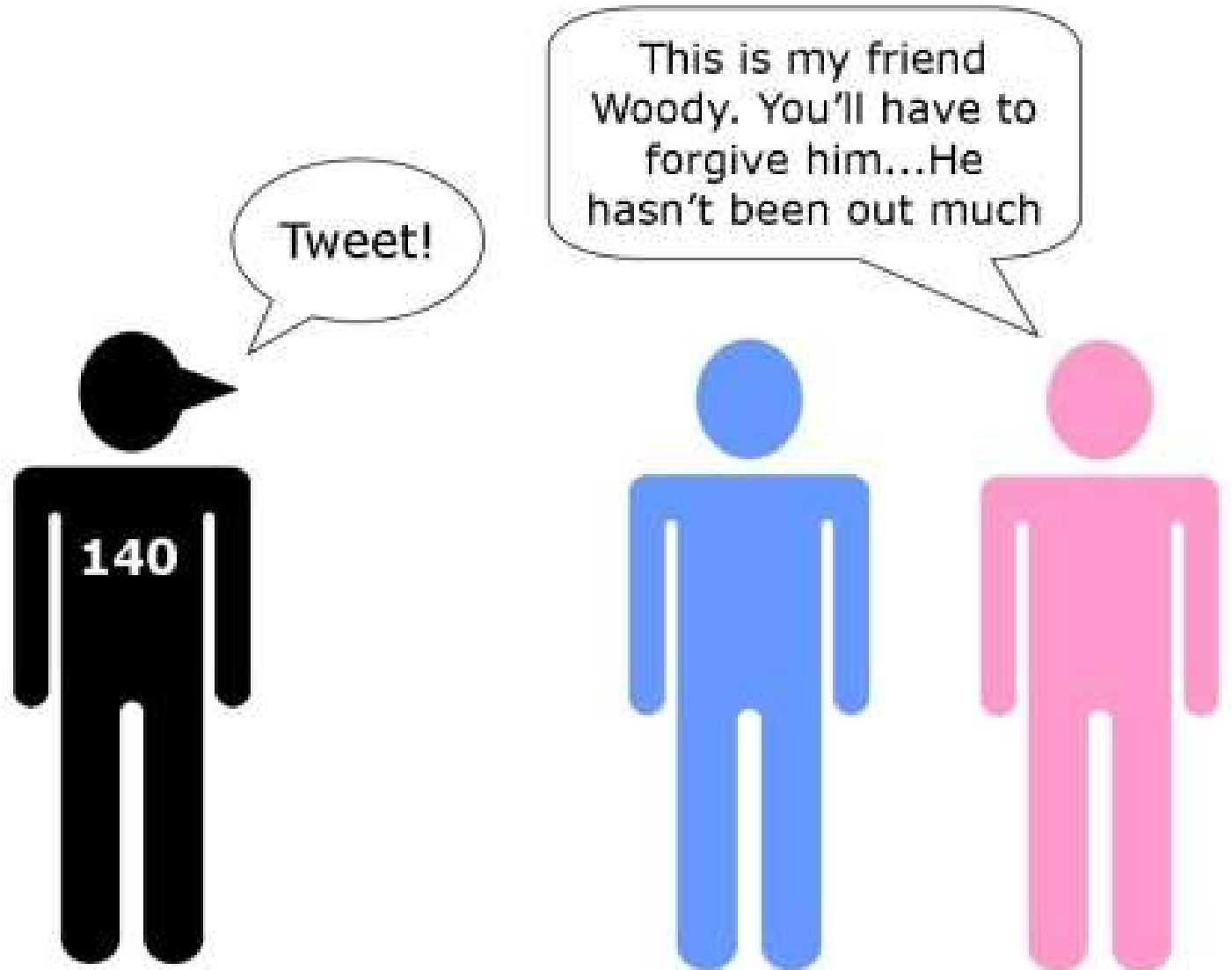
NEW PLACES DISCOVERED

9

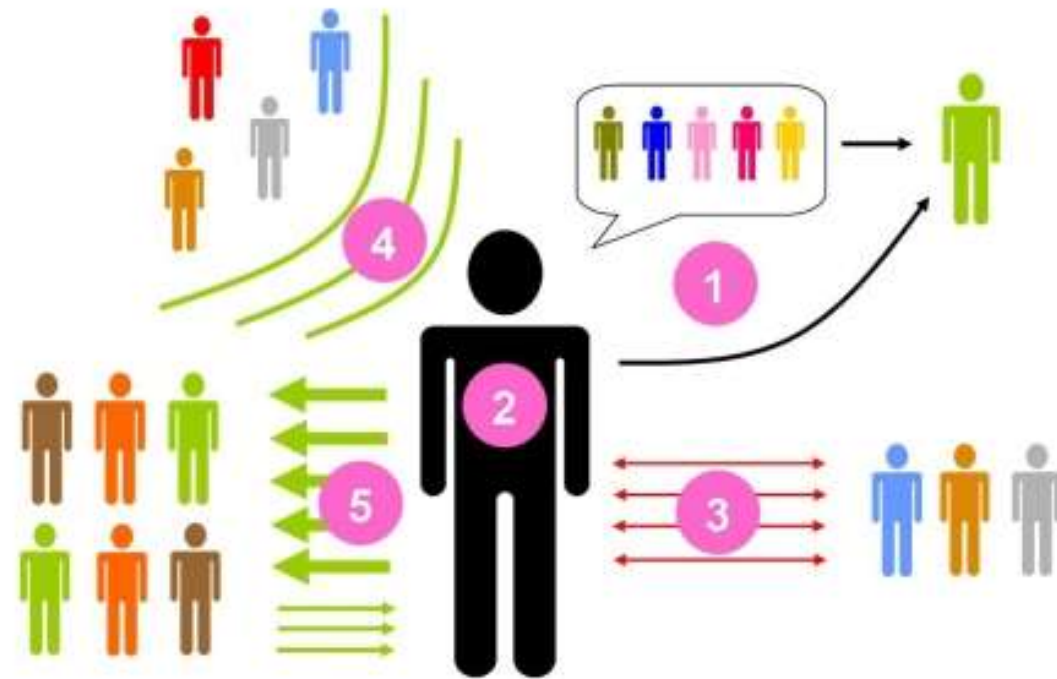
DISTRIBUTION BY DAY OF WEEK



Reality Check



5 Ways to Cultivate an Active Social Network



Source: Cultivate an Active Network (Chris Brogan)

- 1 BE HELPFUL** - offer your network advice or suggest people that can help
- 2 BE PRESENT** - participate and contribute
- 3 BE SOCIAL** - engage with as many people as possible...not to be confused with just pushing out messages to a list.
- 4 SHARE THE LOVE** - make it about them...talk about your network
- 5 PAY IT FORWARD** - build equity by contributing to your network before asking for anything in return...and never take out more than you put in.



Getting Social with Geo

Guido Stein

GIS Analyst

Applied Geographics Inc.